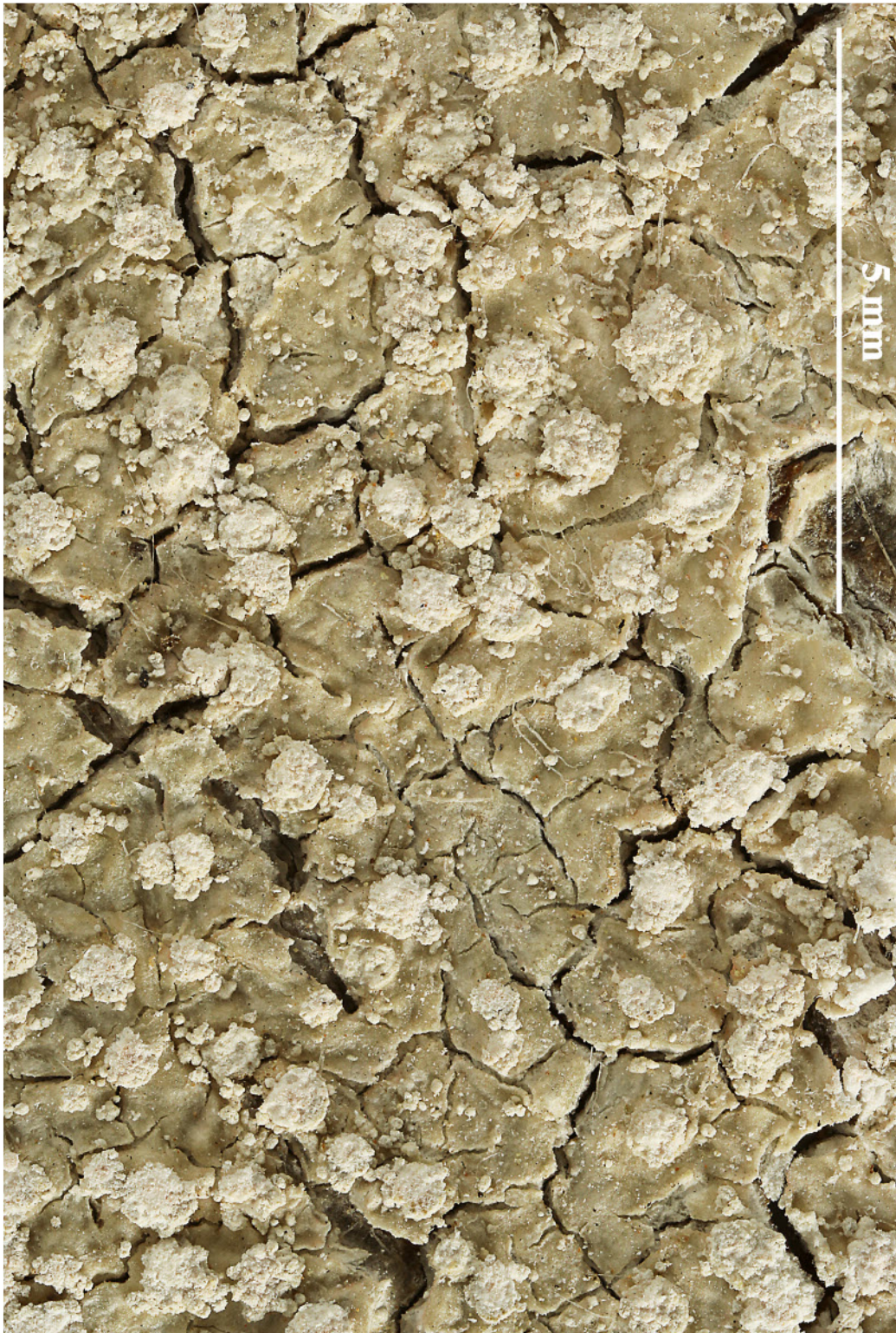
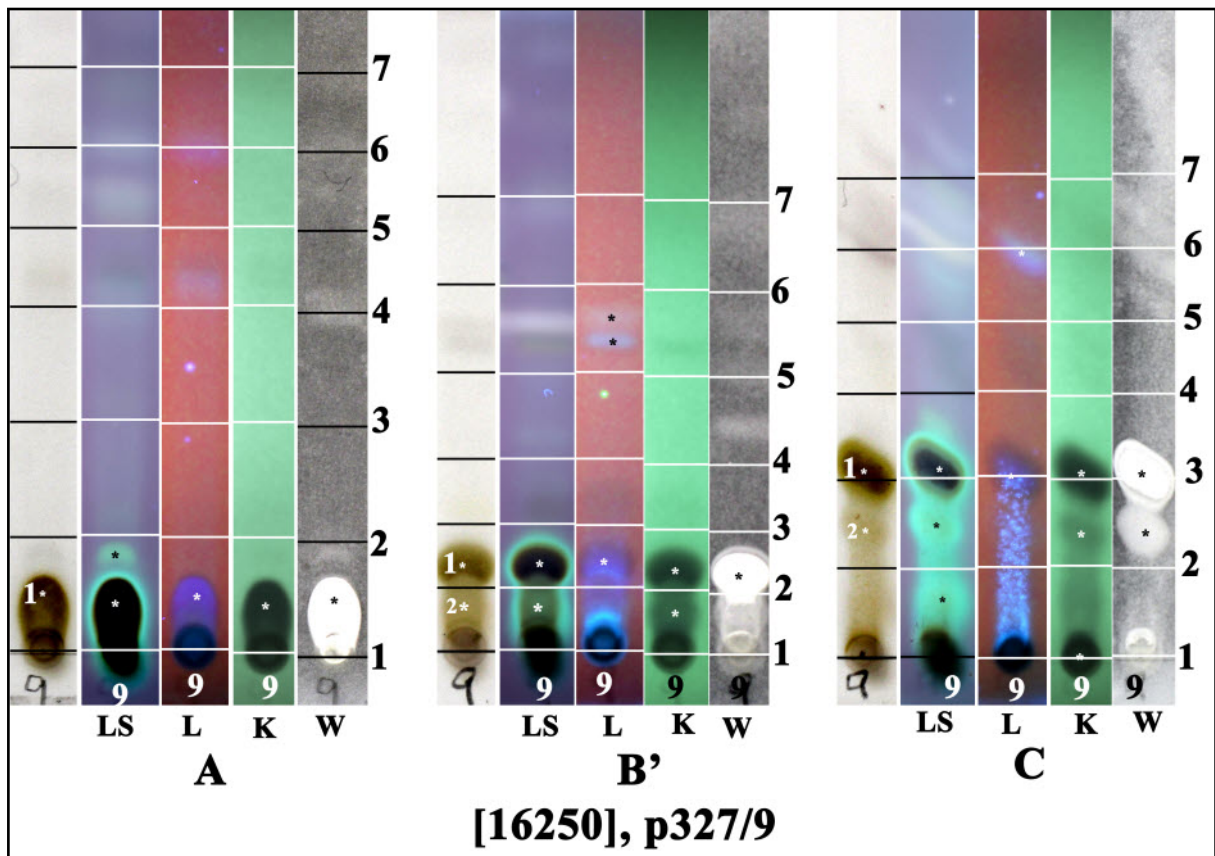


*Pertusaria novaezelandiae* Szatala

Thallus grey-white, areolate, lacking isidia. Soralia in orbicular verrucae, white, well delimited, K+ purple. No spores detected.

[16250], Australia, New South Wales, between Bermagui and Tathra, trail from Aragunnu Beach to Mimosa Rocks, 36.853° S, 150.562° E, 10 m, growing on bark. Leg. F. Schumm & E. Stocker-Wörgötter, 12.11.2009. Chemistry: soralia UV+ blue white, K+ purple, C±orange, P± yellowish; hypothamnolic acid (major) by HPTLC, anal. F. Schumm.





1: hypothamnolic acid, 2: thamnolic acid

*Pertusaria novaezelandiae*