

Polymeridium sulphurescens (Müll. Arg.) R.C. Harris, Lichenogr. Thomsoniana, North American Lichenology in Honor of John W. Thomson (Ithaca): 147 (1998)

= *Arthopyrenia oculata* Müll. Arg., Rep. Meetings Australs. Assoc. Advancem. Sci. 6: 451 (1895)

= *Arthopyrenia suboculata* Müll. Arg., Bull. Herb. Boissier 3: 325 (1895)

= *Arthopyrenia sulphurascens* Müll. Arg., Flora, Regensburg 65(33): 518 (1882)

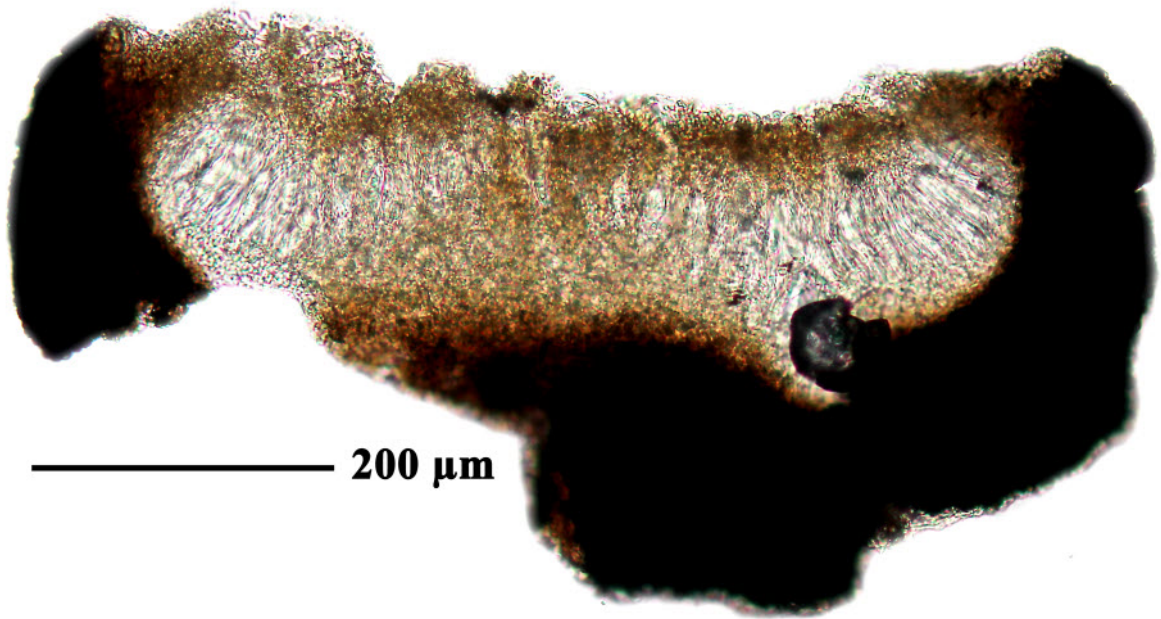
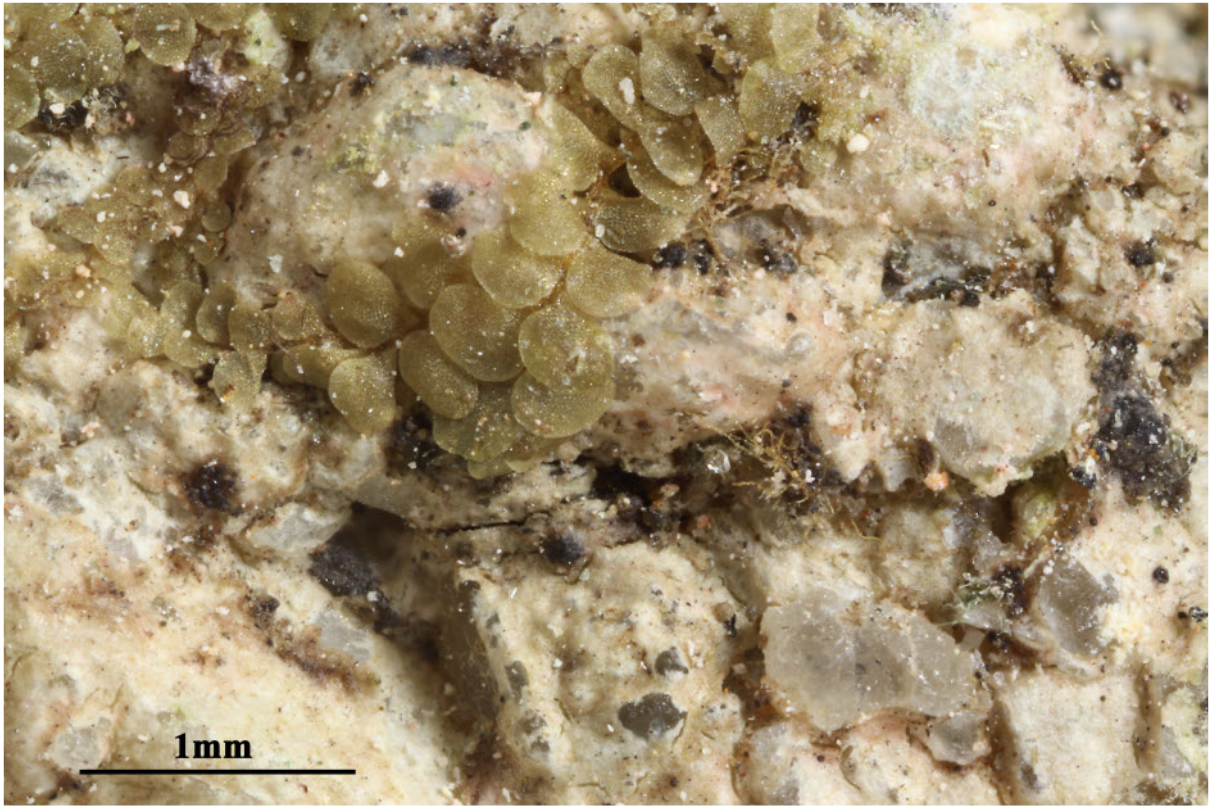
= *Polymeridium oculatum* (Müll. Arg.) R.C. Harris, Bolm Mus. paraense 'Emílio Goeldi', sér. bot. 7(2): 635 (1993) [1991]

= *Pseudopyrenula sulphurascens* (Müll. Arg.) Müll. Arg., Flora, Regensburg 66: 249 (1883)

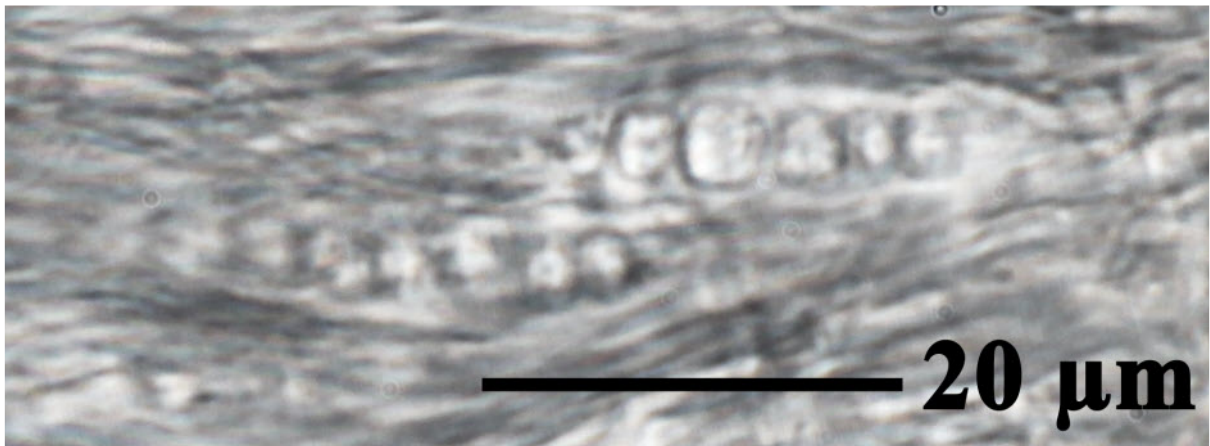
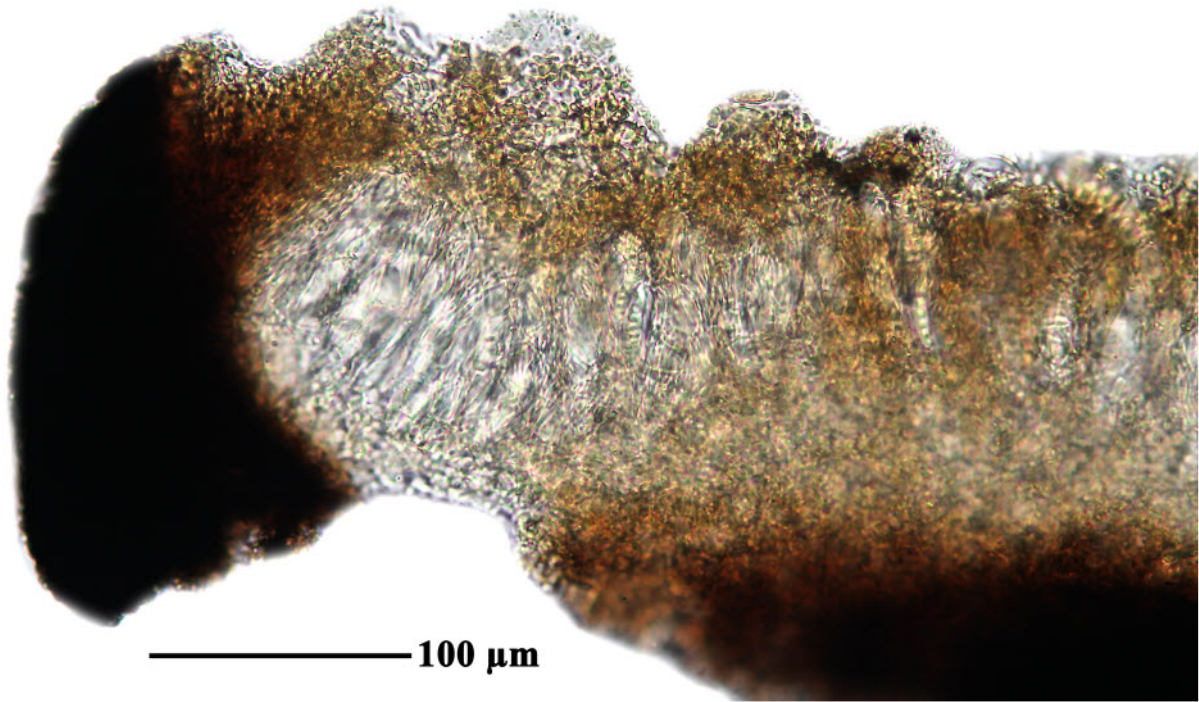
Thallus ecorticate, white, smooth to uneven. Ascomata with apical or partly lateral, separate ostioles, solitary, 0.3-0.5 mm diam., black but ostioles usually with a white rim. Hamathecium clear. Ascospores 8/ascus, 3(-8)-septate, 19-27 x 8-10 μm , hyaline, IKI-. Chemistry: thallus UV-, K-. TLC: no substances detected.

[ABL41643], Australia, Queensland., Fitzroy Island, on Great Barrier Reef, 25 km E of Cairns. 145°59' E, 16°56' S, 1-10 m. On quartzite in tropical rainforest. Leg. A. Aptroot (no 46143), 1.-5.08.1999, det. A. Aptroot, 1999.





Polymeridium sulphurescens



Polymeridium sulphurescens