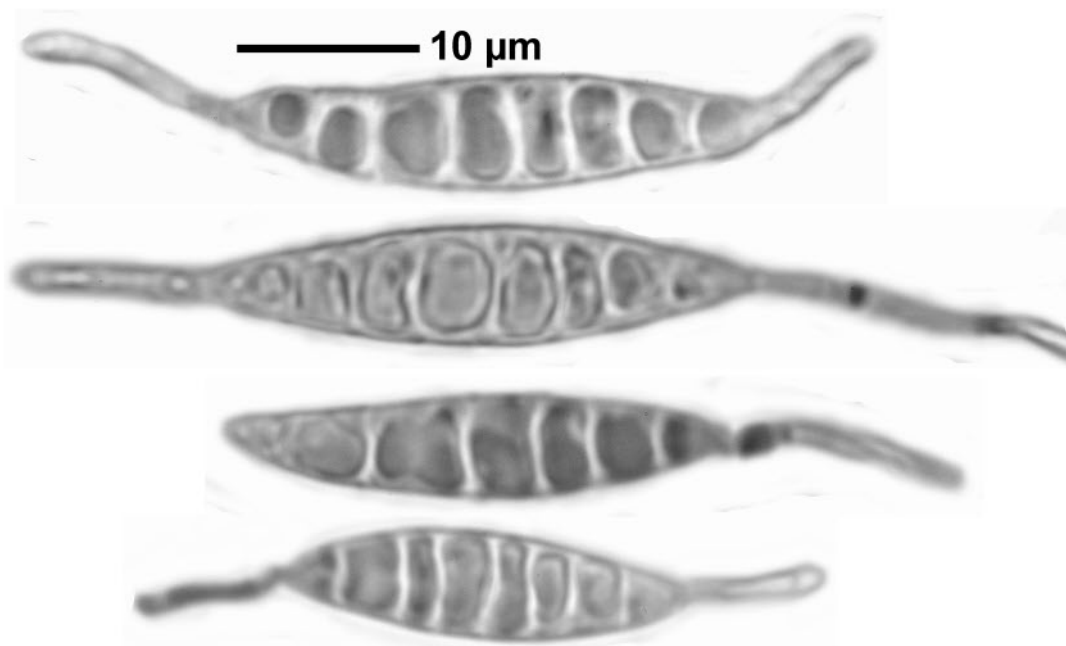
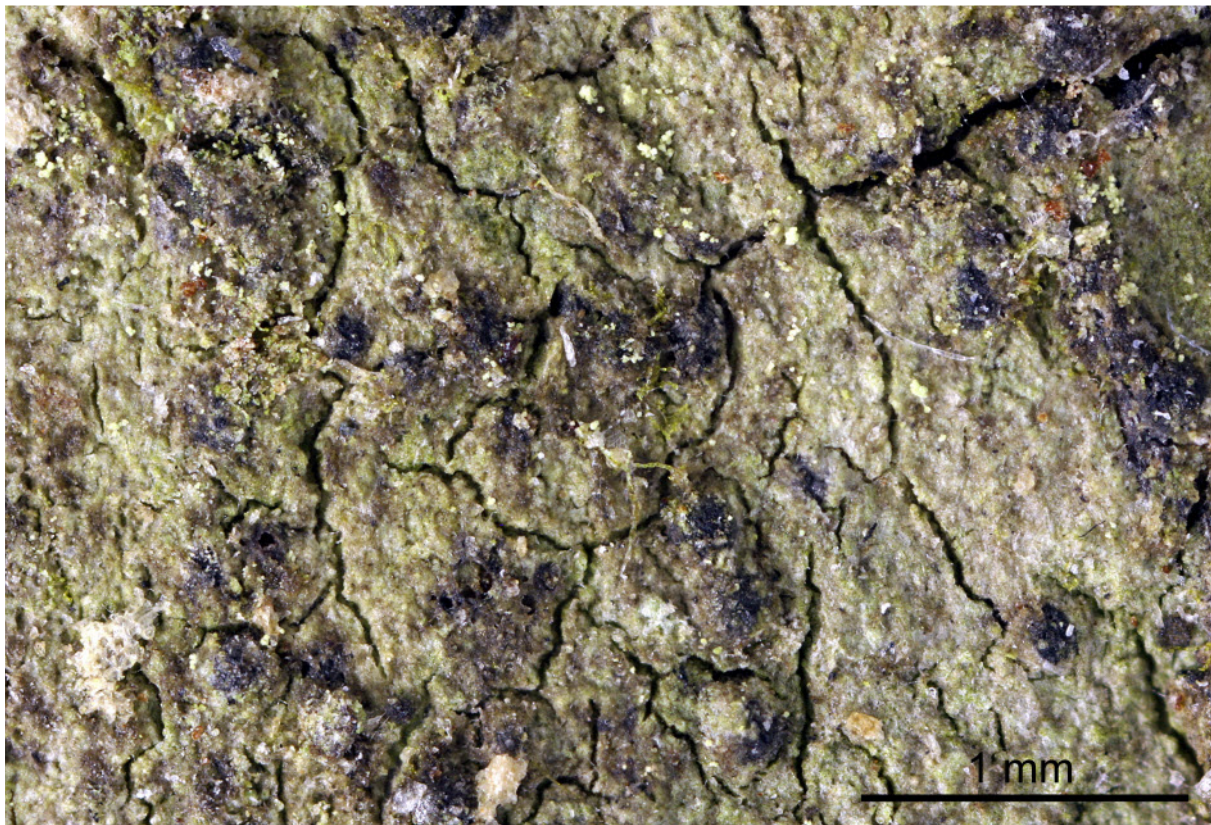


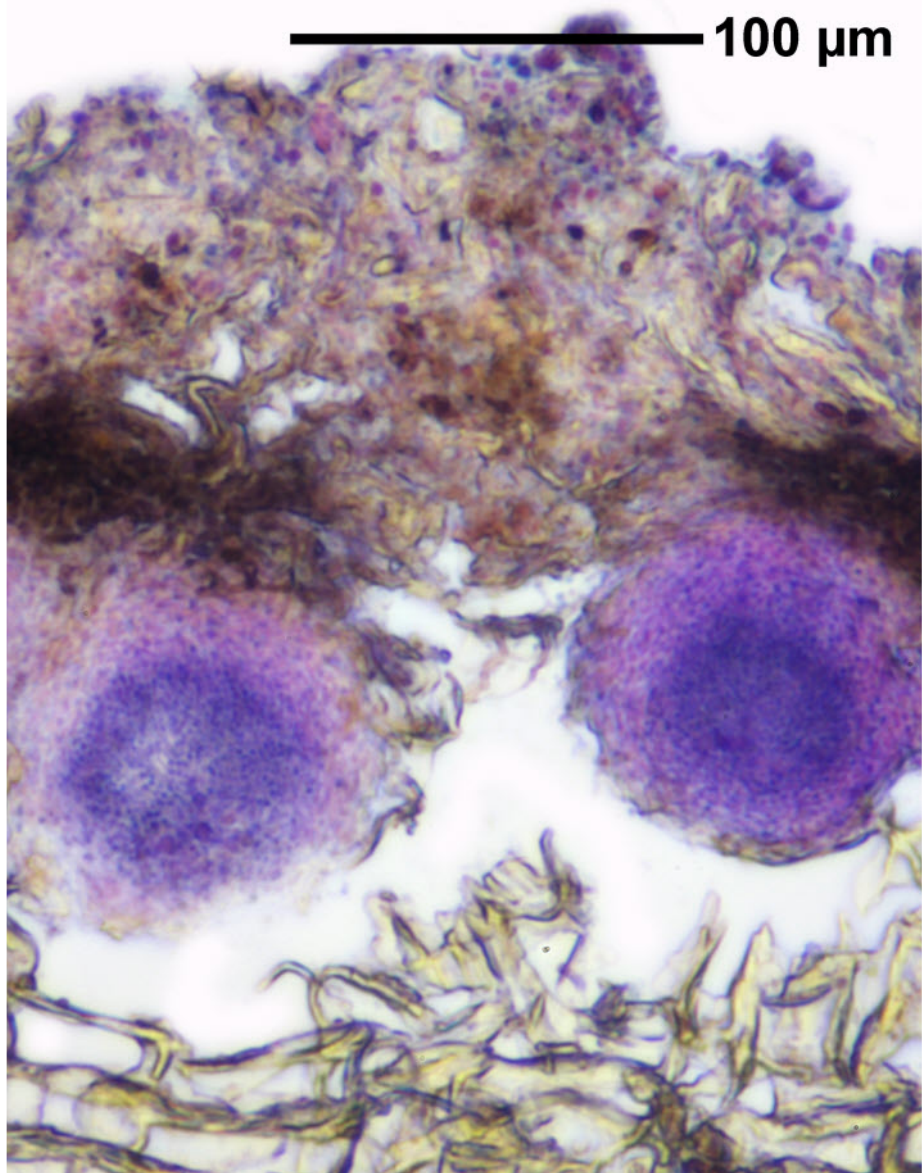
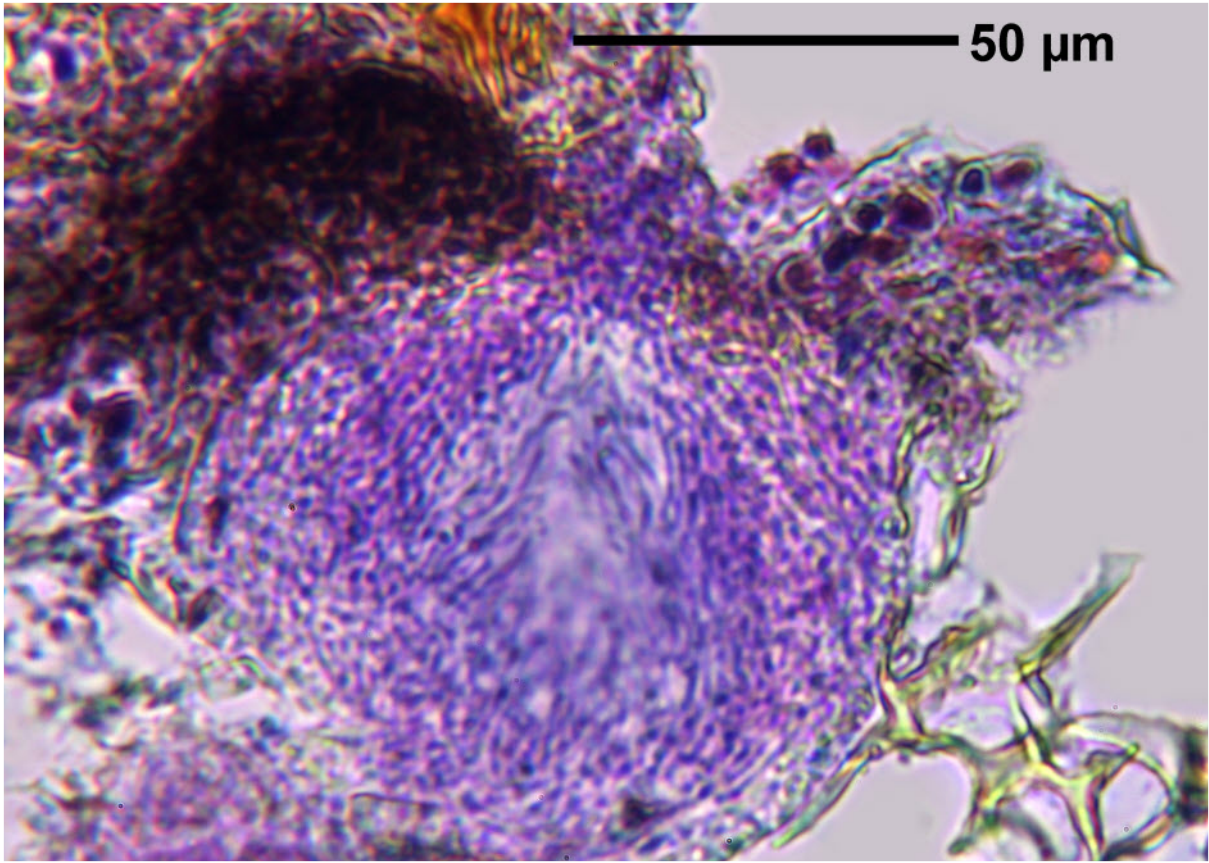
*Porina borneri* (Trev.) D.Hawksw. & P.James

Sporen hyalin, bis ca. 7 septiert, 29-32 x 6.5-8 µm. Paraphysen kaum verzweigt. Trentepohlia. Wahrscheinlich Kosmopolitisch.

[14401], Seychelles, Praslin, Mündung des Cote Or River, östlich von Anse Volbert Village, 4°18.996' S, 55°44.780' E, 2 m; auf Cocos. Leg. Schumm & Frahm 29.09.2008, det. Aptroot 2008.



germinating spores



*Porina borrieri*