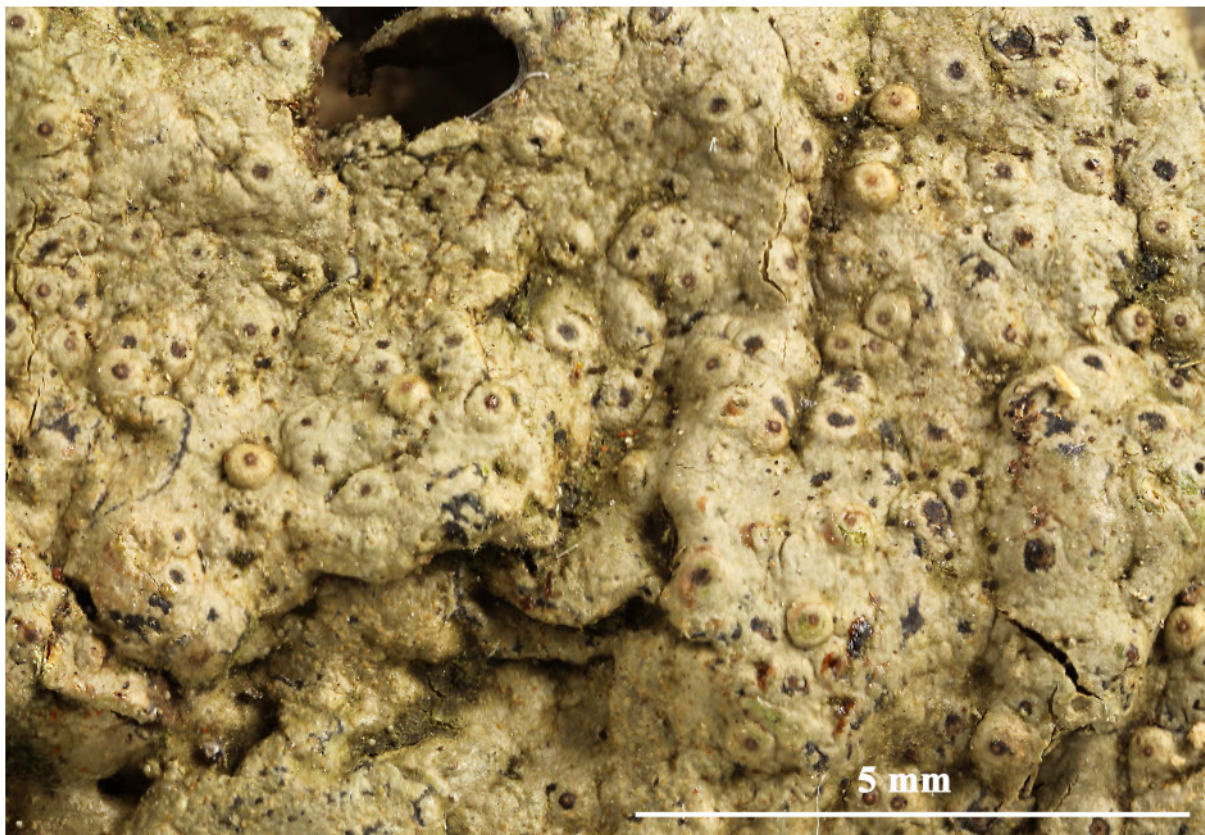


- Porina tetracerae* (Ach.) Müll. Arg., Bot. Jb. 6: 401 (1885)  
= *Clathroporina tetracerae* (Ach.) R.C. Harris, More Florida Lichens, Incl.  
10 Cent Tour Pyrenol. (New York): 172 (1995)  
= *Porina persimilis* Müll. Arg., Flora, Regensburg 70: 428 (1887)  
= *Porina tetracerae* var. *persimilis* (Müll. Arg.) P.M. McCarthy, Nova  
Hedwigia 58(3-4): 401 (1994)  
= *Pyrenula tetracerae* (Ach.) Ach., Mag. Gesell. naturf. Freunde, Berlin  
6(1): 20 (1814)  
= *Verrucaria mastoidea* var. *tetracerae* (Ach.) Nyl., Mém. Soc. Imp. Sci.  
Nat. Cherbourg 5: 138 (1858)  
= *Verrucaria tetracerae* Ach., Methodus, Sectio prior (Stockholmiaë): 121  
(1803)

[ABL48989], Brazil, Sena Madureira, Reserva extratevista Cazumbá-Iracema, Comunidade Cuidado, on tree bark in disturbed tropical rain forest. 09°07' S, 68°59' W, 150 m. Leg. A. Aptroot (no 48989), M. Cáceres & J. Cavalcante, 09.04.2019. Det. A. Aptroot. 2019.





*Porina tetracerae*