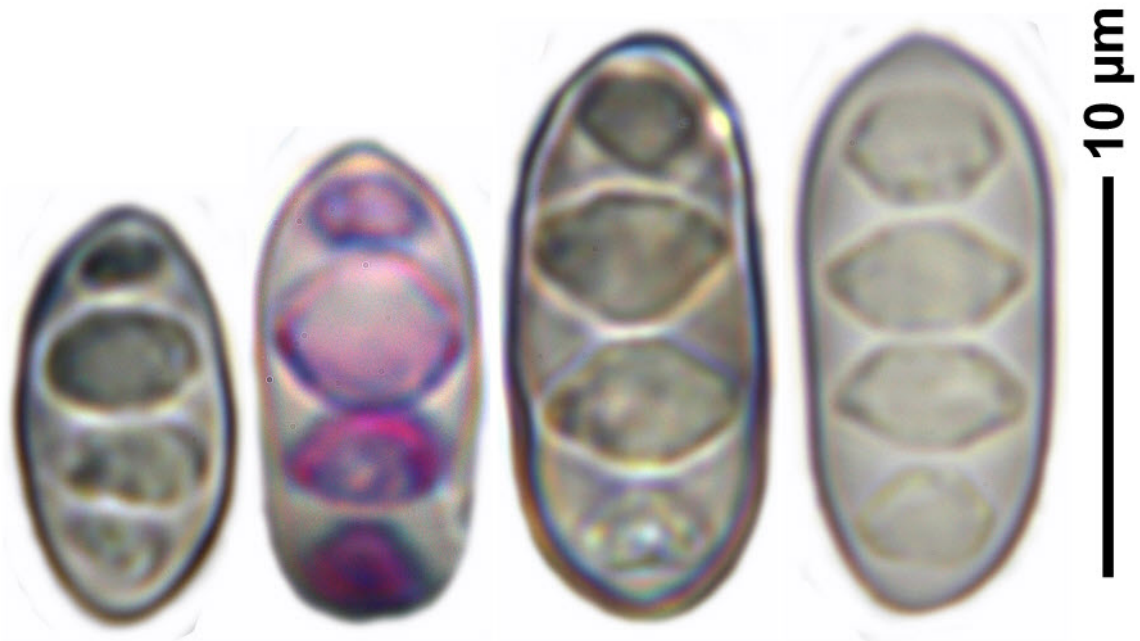
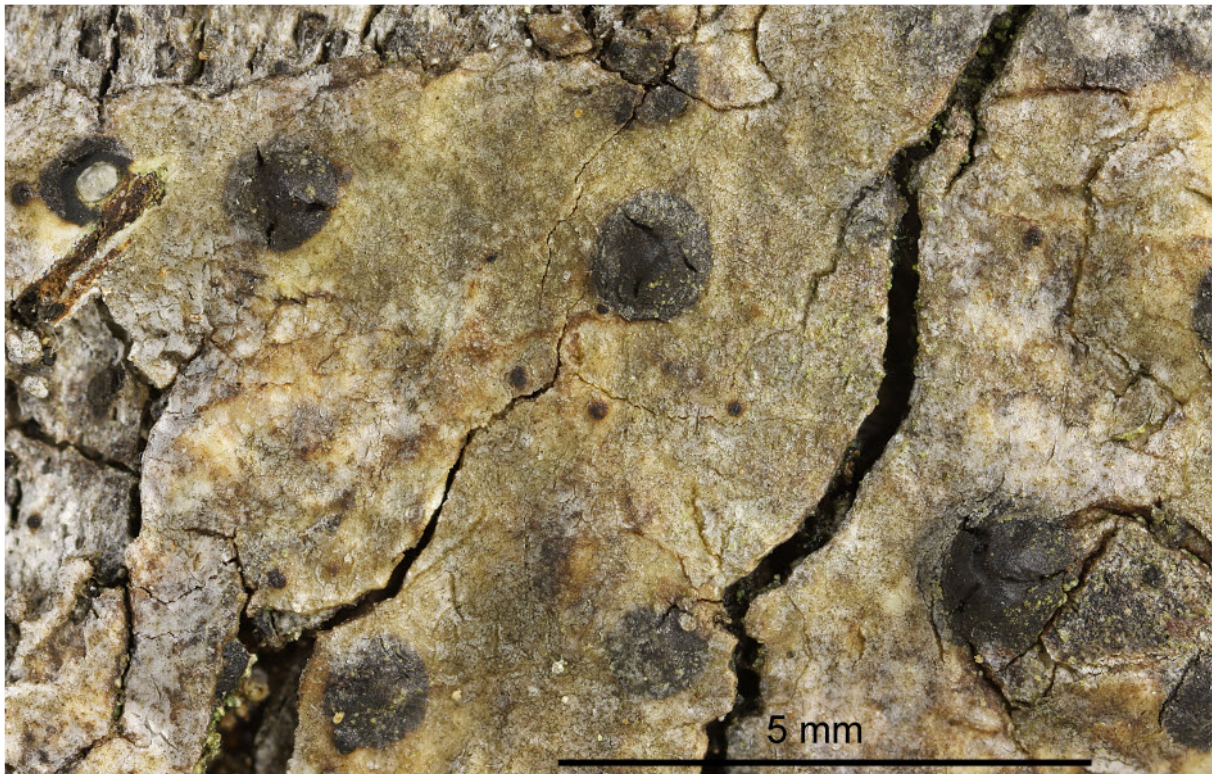
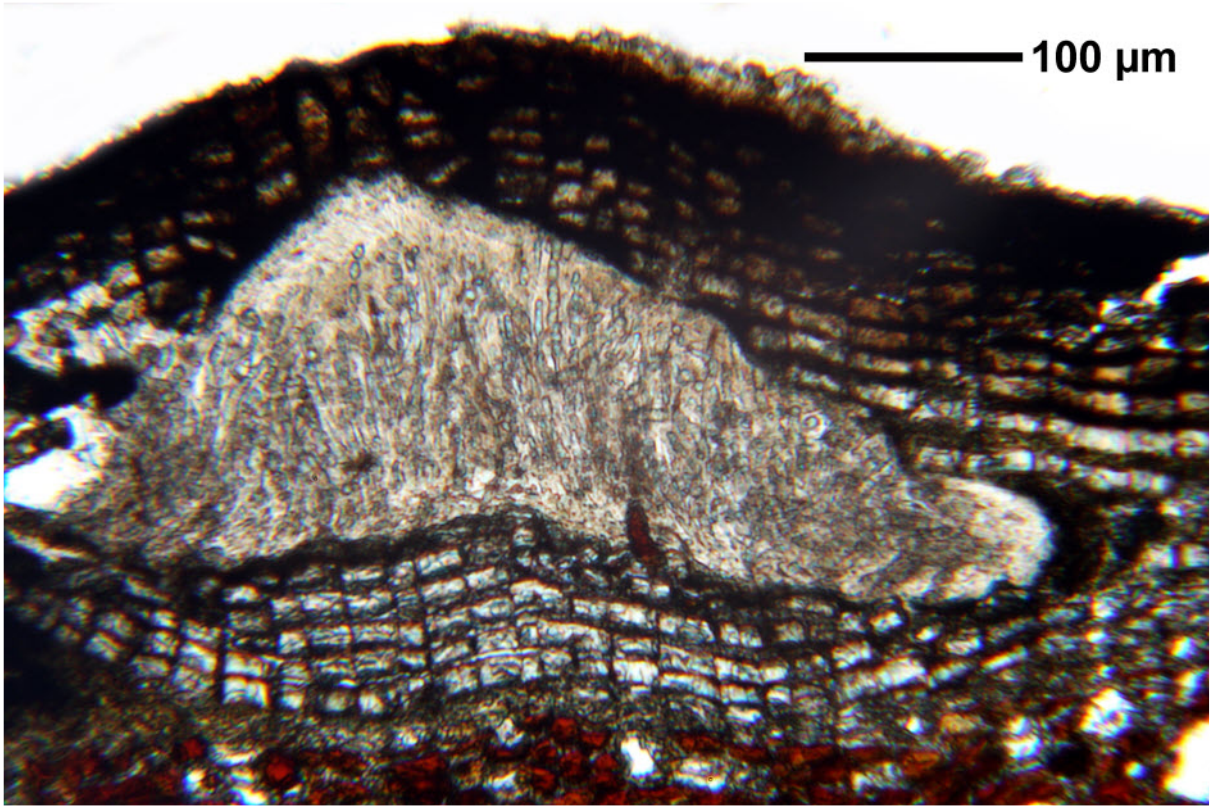


*Pyrenula mamillana* (Ach.) Trevis.

Clypeus often large and conical. Spores grey-brown, 3-septate, (11-) 16-19 x 5  $\mu\text{m}$ , uniseriate. Hymenium inspersed. Thallus UV-negative.

[14554], Seychelles, La Digue, La Retraite, Straße nach Grand Anse, 4°21.996' S, 55°50.170' E, ca. 40 m. Leg. Schumm 05.10.2008, det. Aptroot 2008.





*Pyrenula mamillana*