

*Cladonia furcata* (Huds.) Schrad.

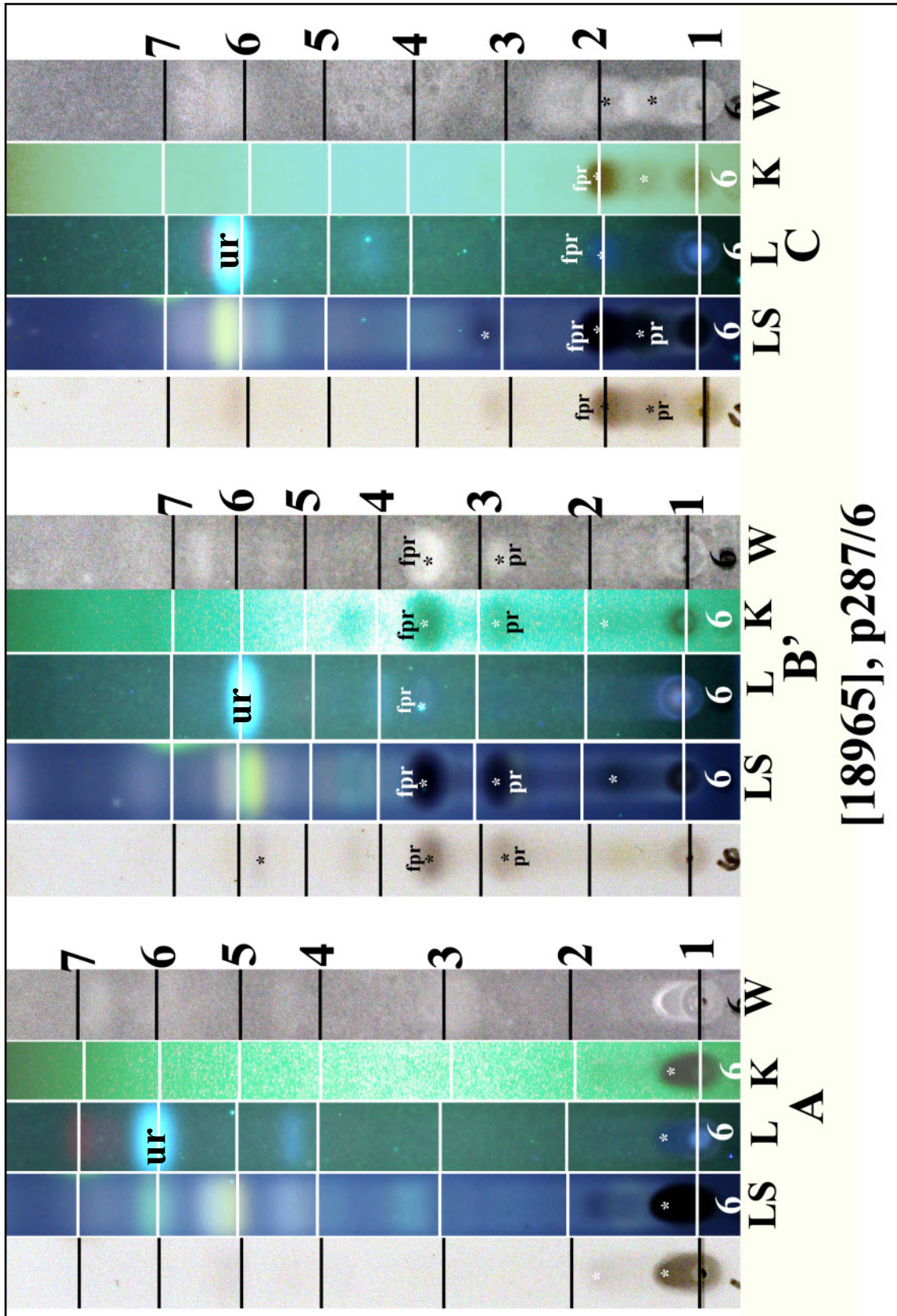
Apothecia brown, terminal on podetia. Basal squamules evanescent. Podetia 2-8 cm tall, 0.5-2 mm diam., richly branched, axils, open, corticate, esorediate, escypherous; cortex continuous to areolate with or without squamules on podetia. K-, KC-, P+ red.

[18965], Australia, New South Wales, Polblue Swamp, Barrington Tops State Forest, 50 km west-north-west of Gloucester, 31°58' S, 151°26' E, 1450 m, growing on soil beneath shrubs in *Eucalyptus pauciflora*, *Leptospermum* and Epacridaceae fringed swampy area. Leg. J.A. Elix (22903) & H. Streimann, 25.04.1990. Chemistry: fumarprotocetraric acid (major), protocetraric acid (minor), ursolic acid by TLC, anal. J.A. Elix. LICHENES AUSTRALASICI EXSICCATI NO. 202.





*Cladonia furcata*



fpr: fumarprotocetraric acid, pr: protocetraric acid, ur: ursolic acid