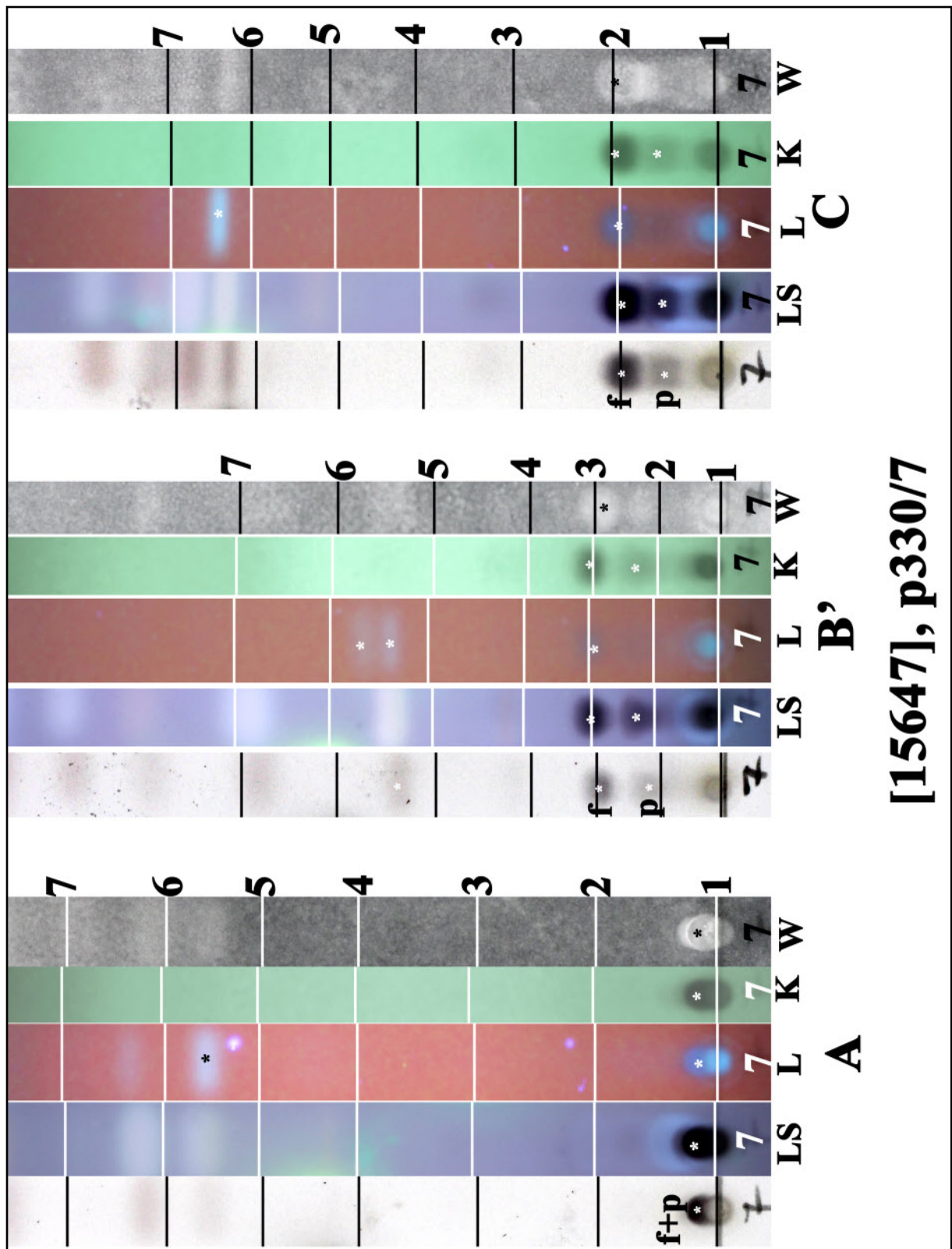


*Cladonia verticillata* (Hoffm.) Schaer. s. lat.

Thallus squamulose, strongly divided, lacking soralia; upper surface greenish to brownish grey; lower surface white. Podetia cup-shaped, closed, repeated proliferating from the middle or the margin of the cups, lacking soredia. Cortex first coherent, later areolate, cracked or nodular warty, greenish-grey to brownish grey. Apothecia brown, on the rim of cups. Chemistry: medulla: P+ brick-red, C-, KC± orange especially the algae zone, UV-.

[15647], Australia, Western Australia, Perth Hills, east of Perth, 31.818° S, 116.456° E, 345 m, in dry Eucalyptus forest. Leg. F. Schumm & E. Stocker-Wörgötter, 21.10.2009, det. Schumm, conf. Ahti 2011. Chemistry: protocetraric acid, fumarprotocetraric acid by HPTLC, anal. F. Schumm.





[15647], p330/7

p: protocetraric acid, f: fumarprotocetraric acid