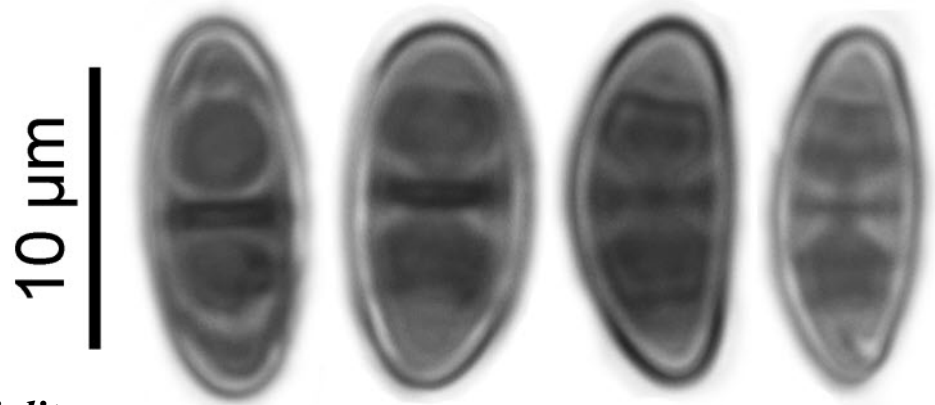
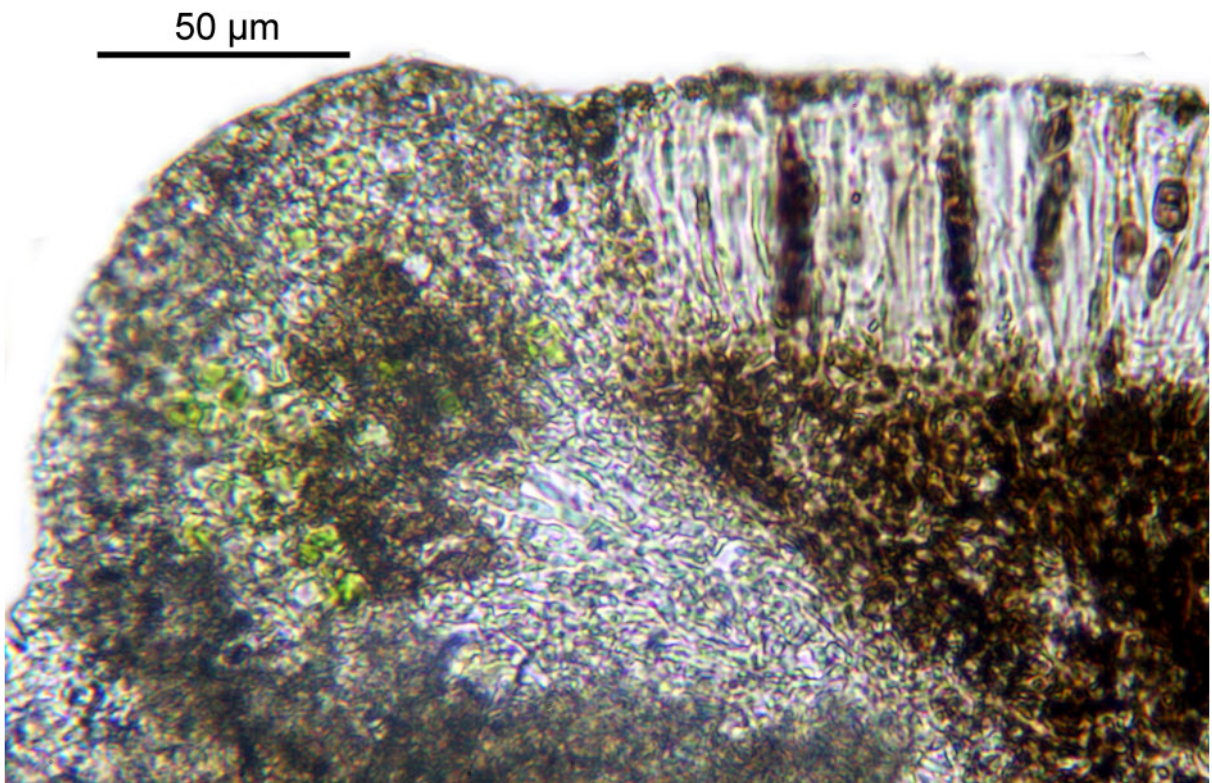
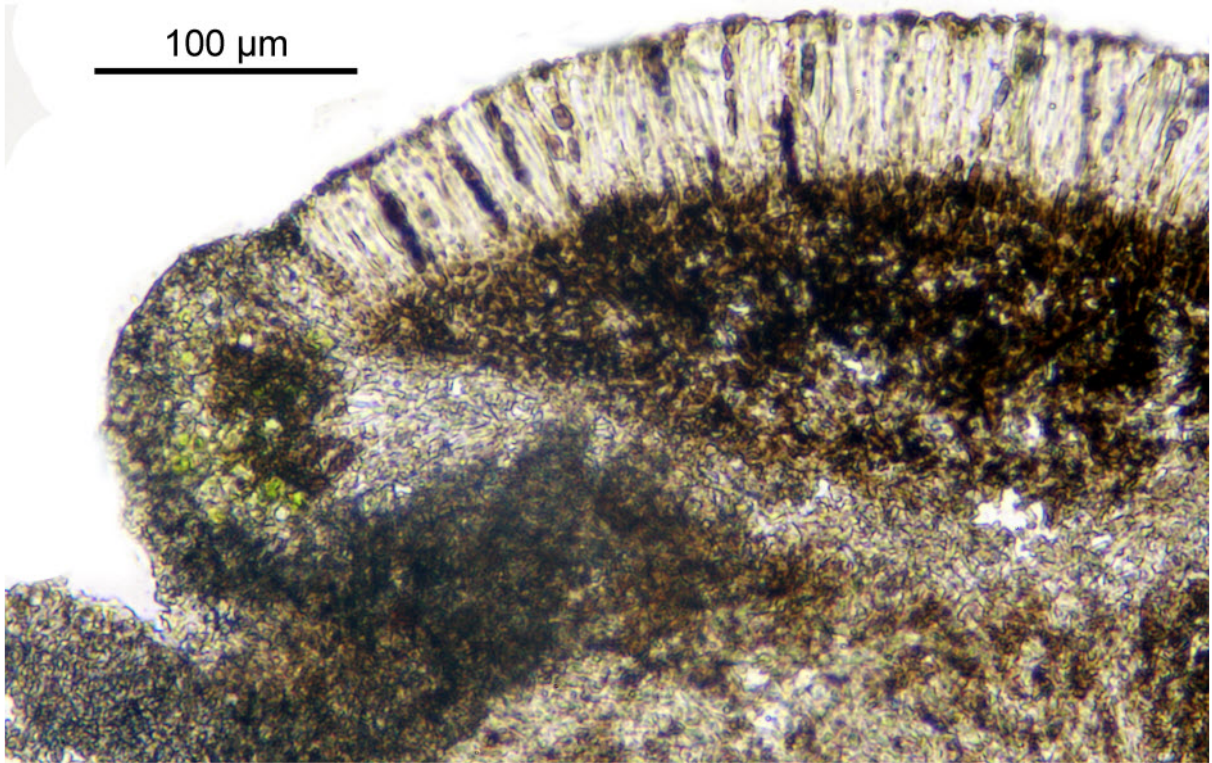


*Dirinaria aegialita* (Afzel. ex Ach.) B.J.Moore

Thallus with pustules. Spores brown, 8/ascus, 1-septate, walls thickened, 11-12 x 5-6  $\mu\text{m}$ . Hymenium 65  $\mu\text{m}$ , hyaline. Hypothecium brown, 120  $\mu\text{m}$ . Excipulum bright, with algae. Cortex K+ yellow, C-, P-. Medulla K-, P-, C-, UV+ white; atranorin, divaricatic acid. Pantropical.

[14433], Seychelles, Praslin, Anse Lazio, beim Hotel Bonbon Plume; 4°17.611' S, 55°42.131' E, ca. 2 m. Leg. Schumm & Frahm 29.09.2008, det. Schumm, test. Aptroot 2008.





*Dirinaria aegialita*