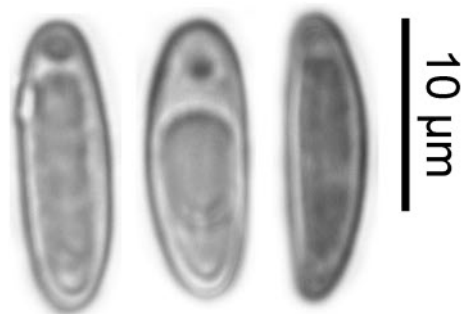
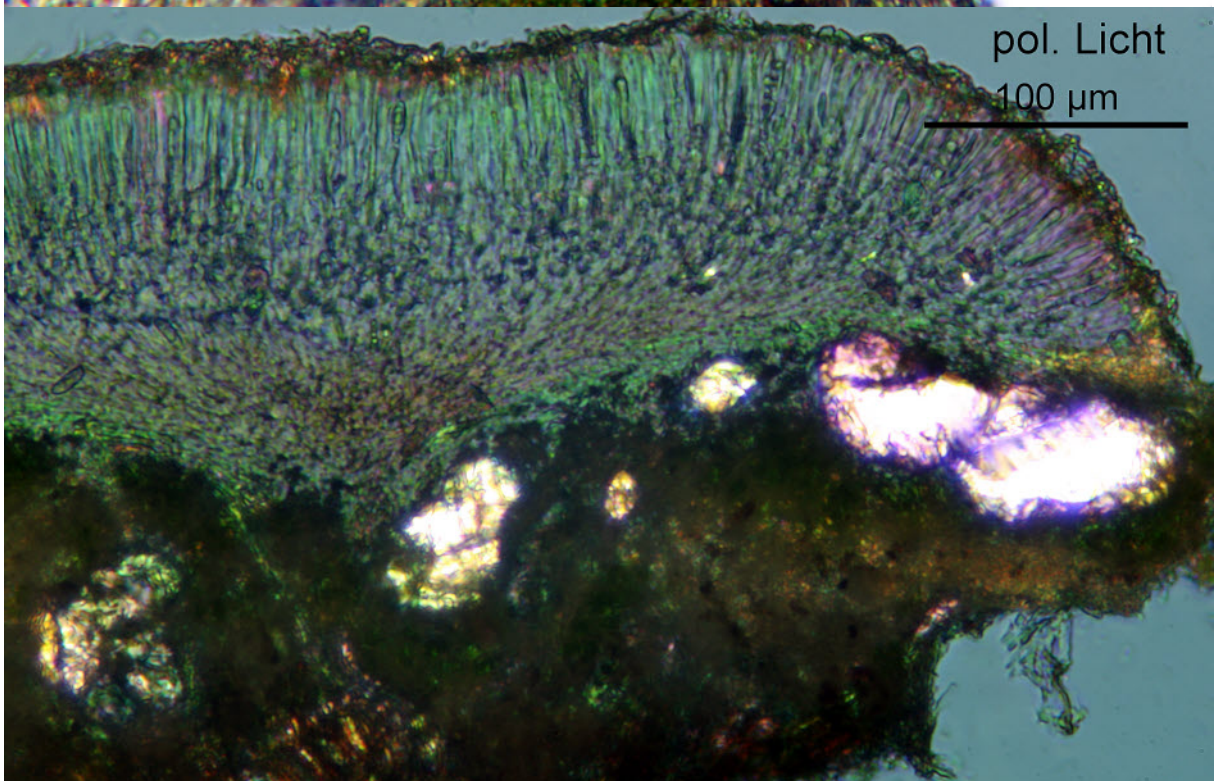
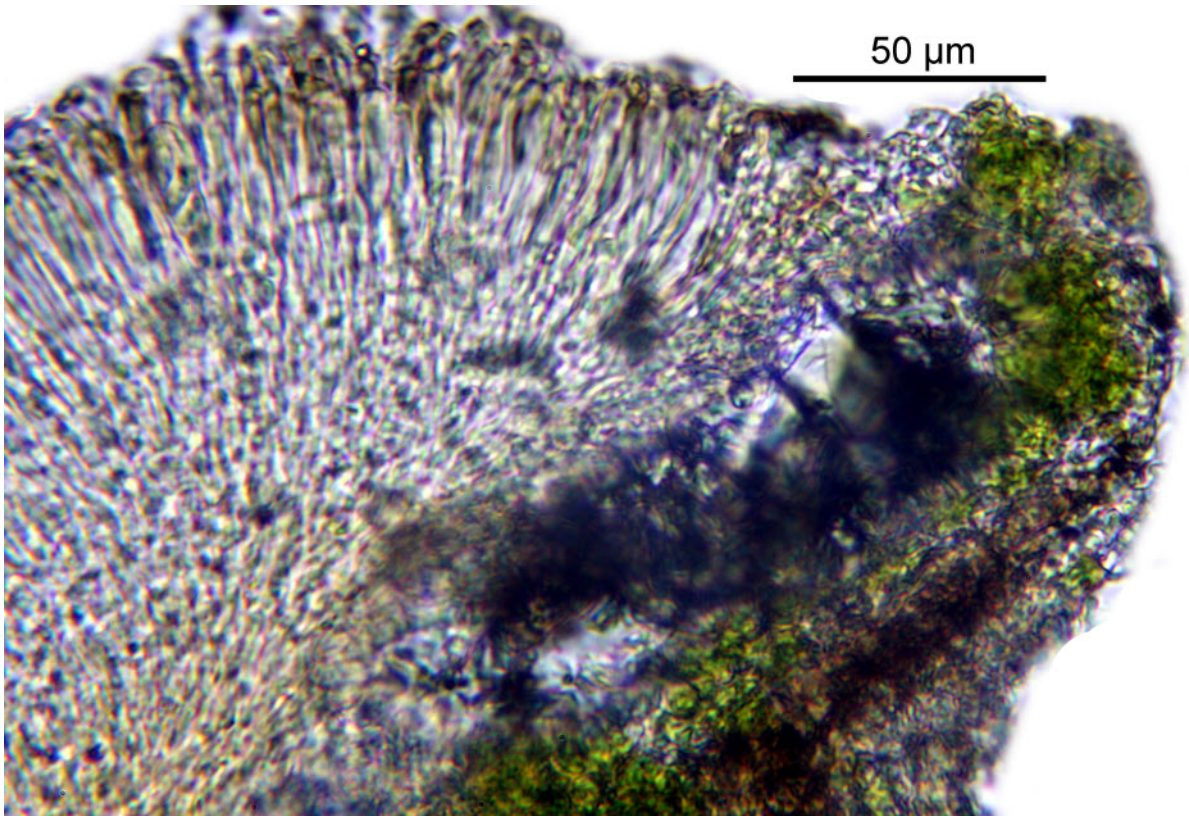


Lecanora helva Stizenb.

Spores hyaline, 8/ascus, 12-16 x 4.5-7.5 μm . Epithecium brownish, 7 μm . Hymenium hyaline, 77 μm . Hypothecium colourless, 77 μm . Exipulum and Hypothecium with big crystals. Pantropical.

[14422], Seychelles, Praslin, an der Straße von Anse Boudin nach Zimbabwe; 4°18.121' S, 55°42.112' E, 180 m; auf *Casuarina equisetifolia*. Leg. F. Schumm & J.- P.Frahm 29.09.2008 (5), conf. Aptroot 2008





Lecanora helva