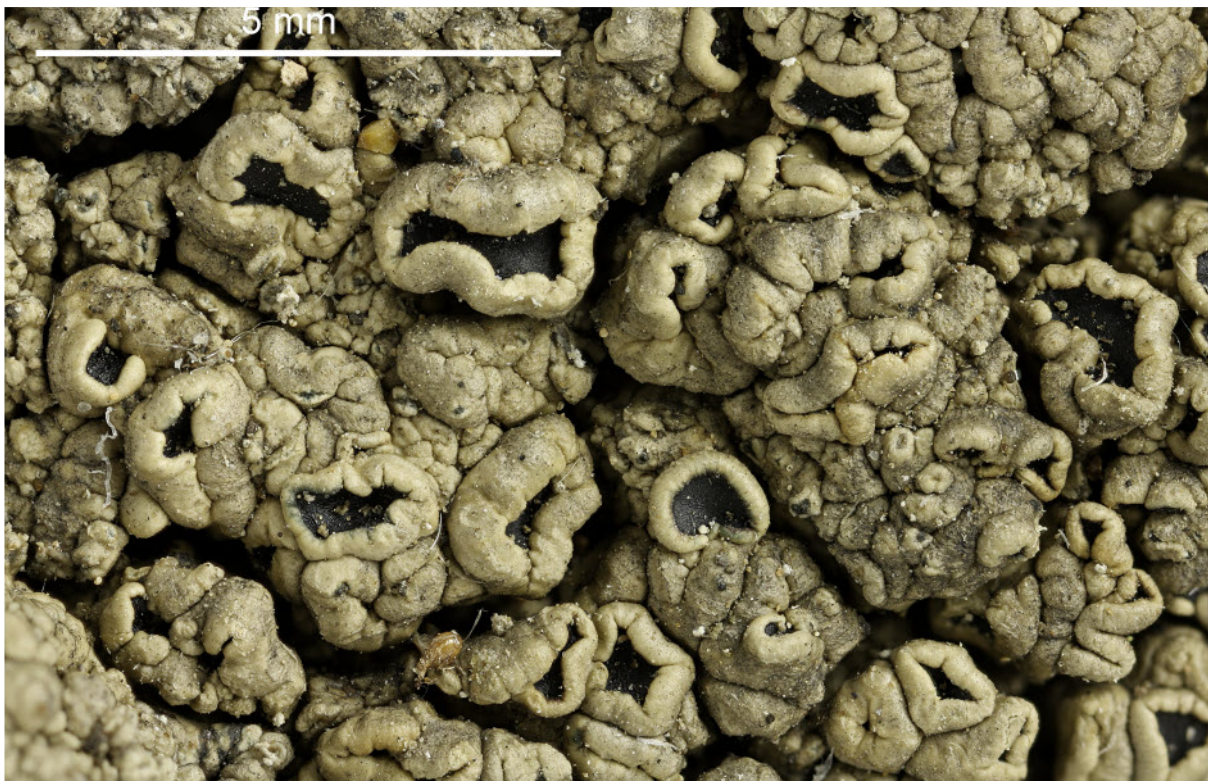
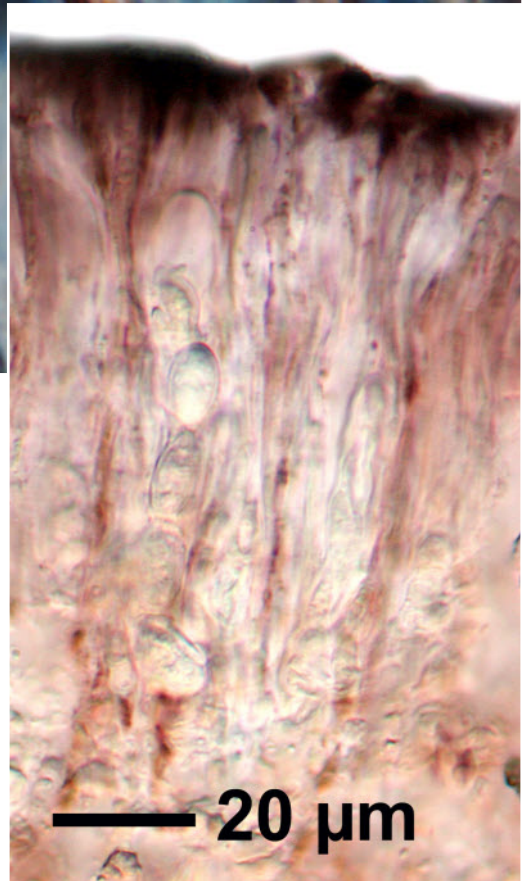
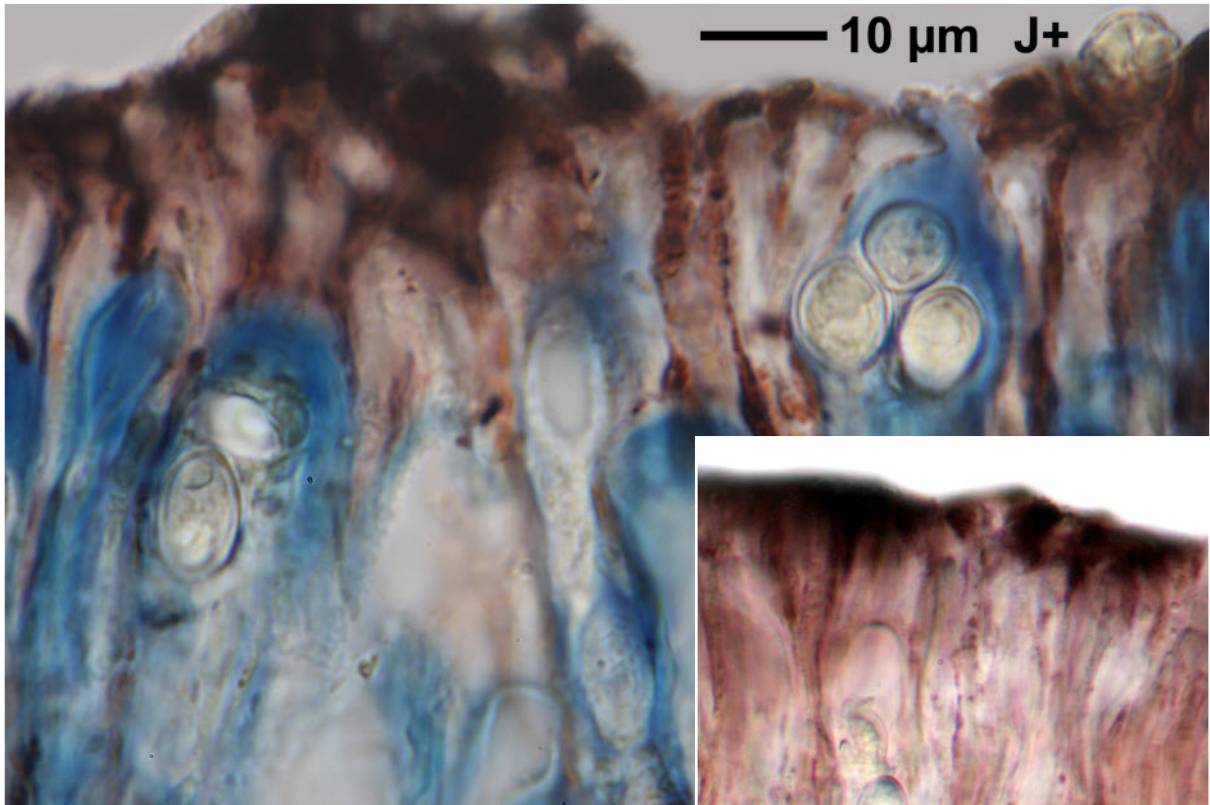
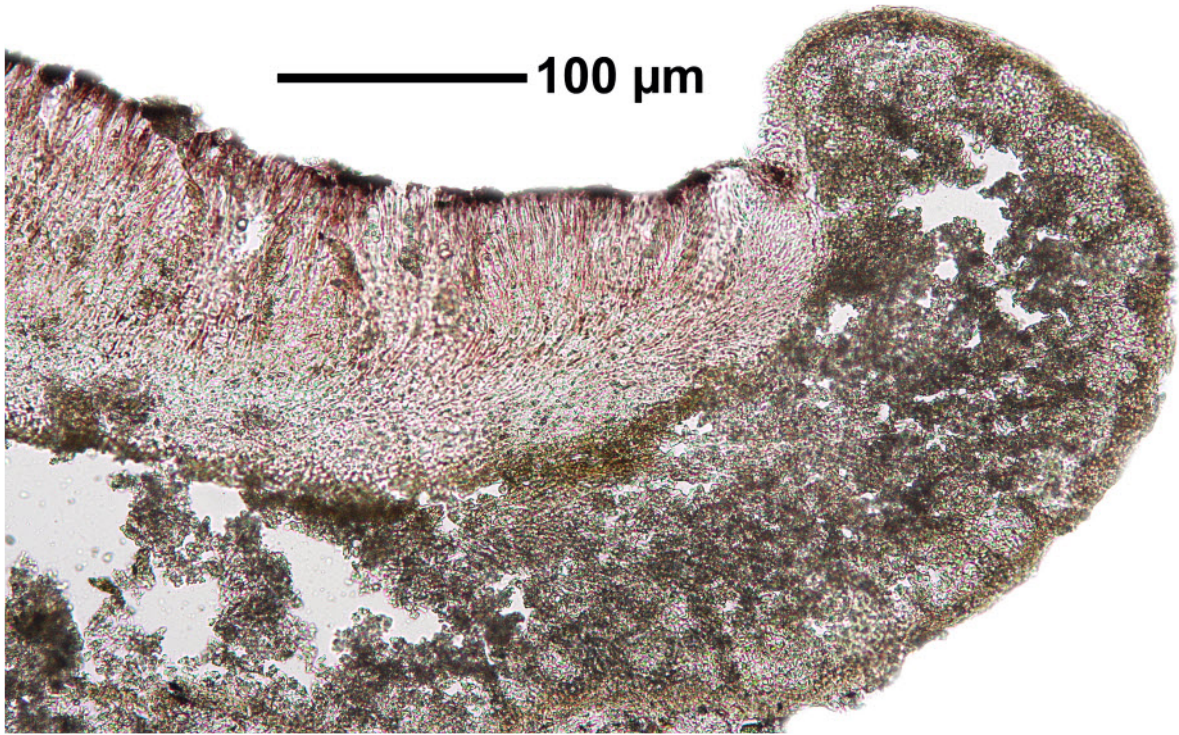


*Tephromela atra* (Huds.) Hafellner ex Kalb  
[= *Lecanora atra* (Huds.) Ach.]

Thallus grey-white or greyish-green, thick, warted-areolate, cracked into larger areoles. Epithecium dark red-brown. Hymenium 50-60  $\mu\text{m}$ , purplish brown to purple-violet. Spores hyalin, 0-septate, 10-15 x 5-8  $\mu\text{m}$ . Thallus K+ yellow, C-, KC+ yellow, P-. Medulla UV+ ice-white; atranorin,  $\alpha$ -collatolic,  $\pm$  alectoronic acids. On siliceous rocks. Cosmopolitan.

[2526], Germany, Mitteldeutschland, Bez. Nordhessen, zerstreut an grobkörnigen Basalttuffhöckern senkrechter schattseitiger Felswände im Lecideion tumidae, 500 m, NW, pH 7,0, aufgelassene Tuffsteinbrüche in der Nordwestflanke des Dörnbergs, NP. Habichtswald, W. Kassel, leg. et det G. Follmann 01.1977. Follmann: Lichenes Exsiccati Selecti Nr. 210.





*Tephromela atra*