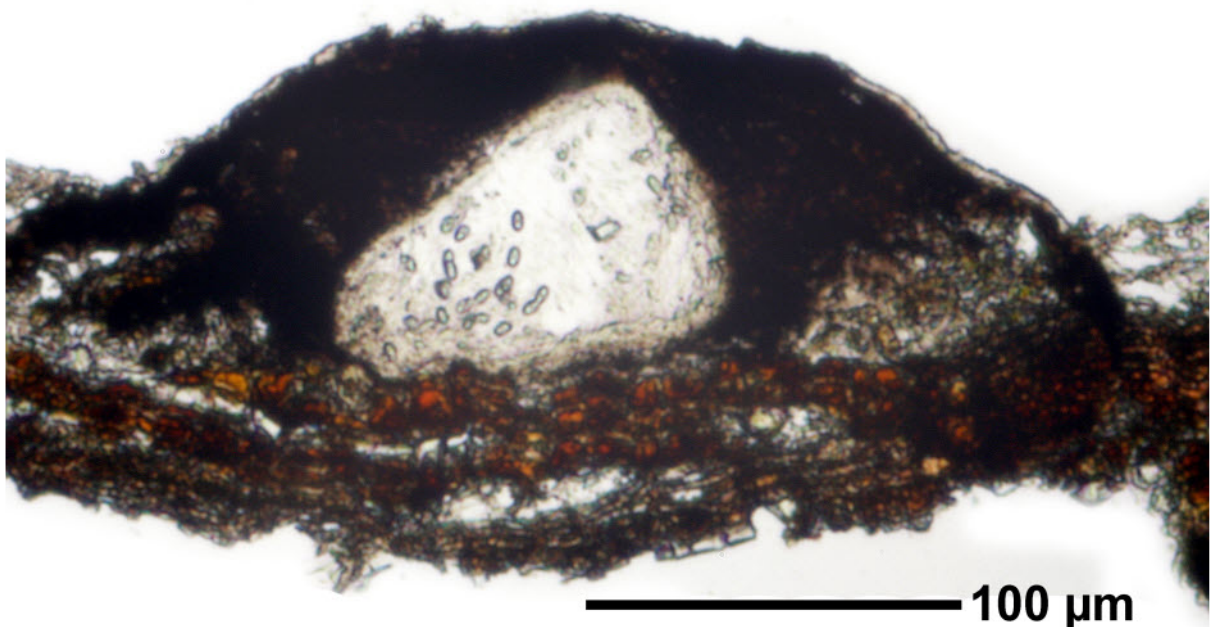
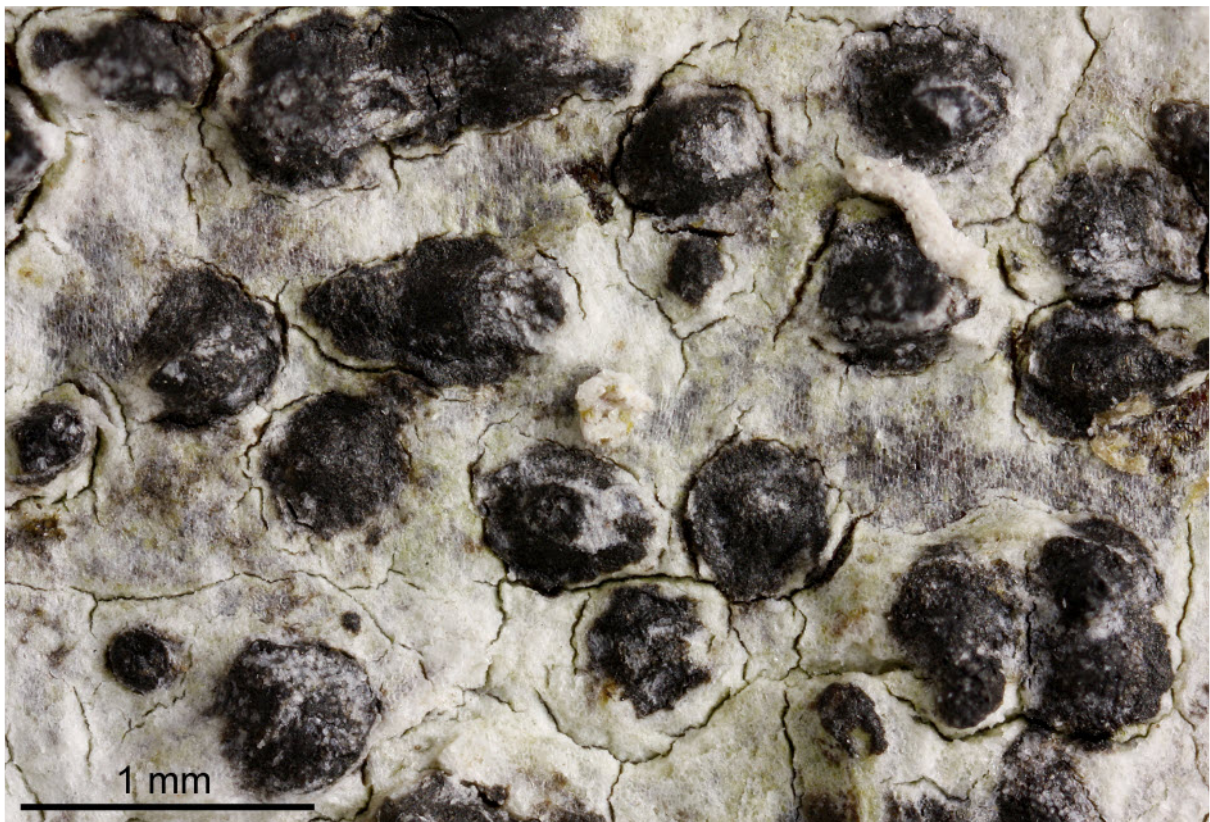
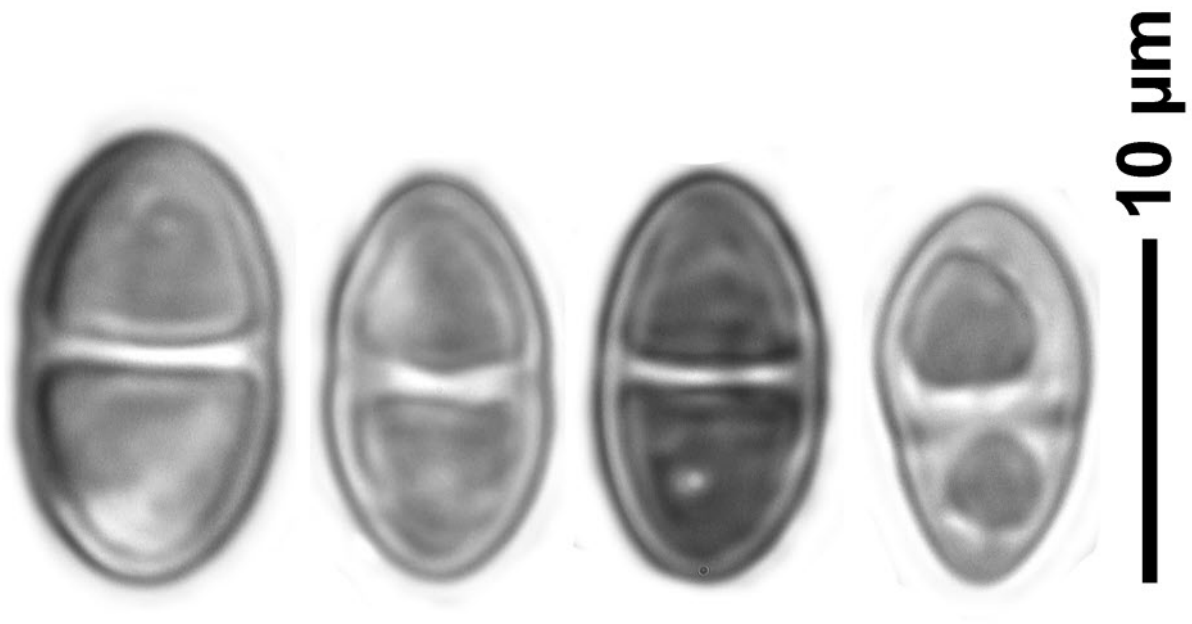
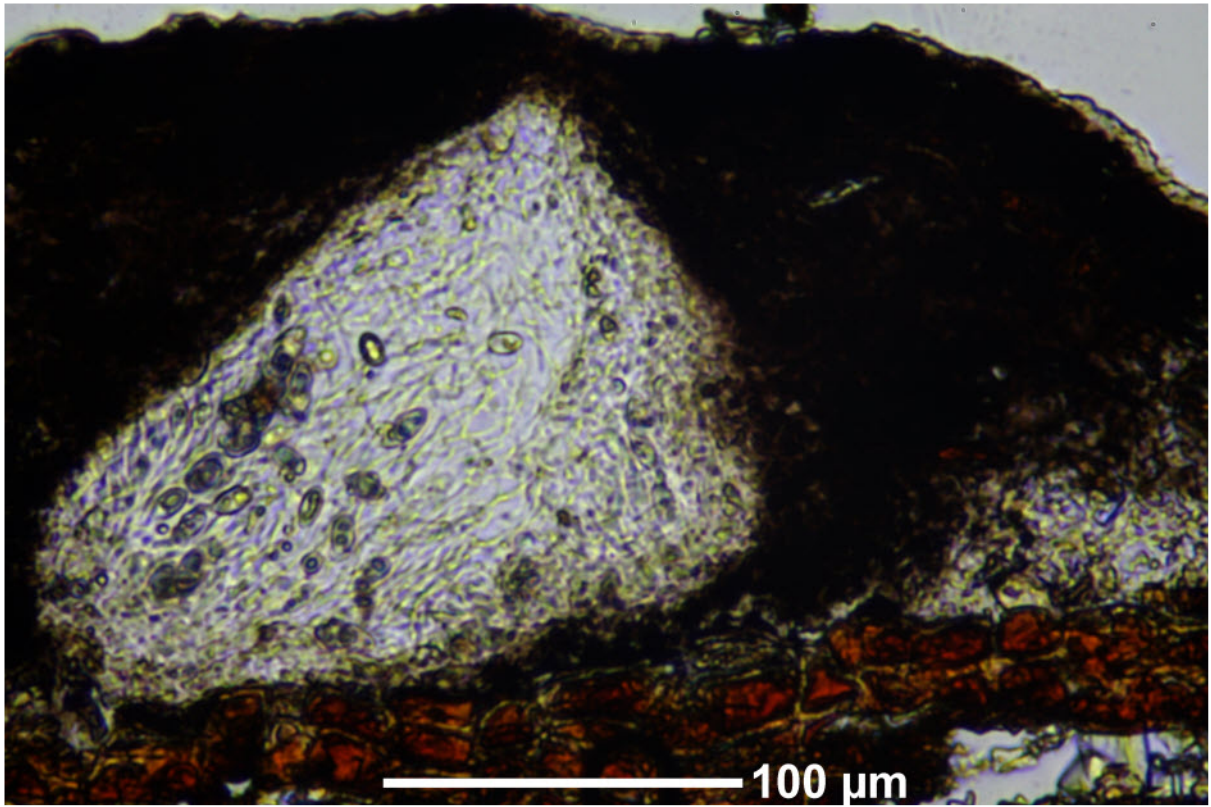


Anisomeridium bifforme (Borrer) R.C.Harris

Peritheciumwall K⁺ red. Sporen hyaline, smooth, 1-septate, septum mostly median 10-13 x 6-8 µm. Thallus UV-. Photobiont *Trentepohlia*. Cosmopolitan.

[14333], Seychellen, Praslin, Anse La Blague, beim Hotel La Vanilla, 4°19.793' S, 55°47.019' E, 17 m. Auf Rinde von *Artocarpus*. Leg. Schumm & Frahm 27.09.2008, det Aptroot 2008.





Anisomeridium bifforme