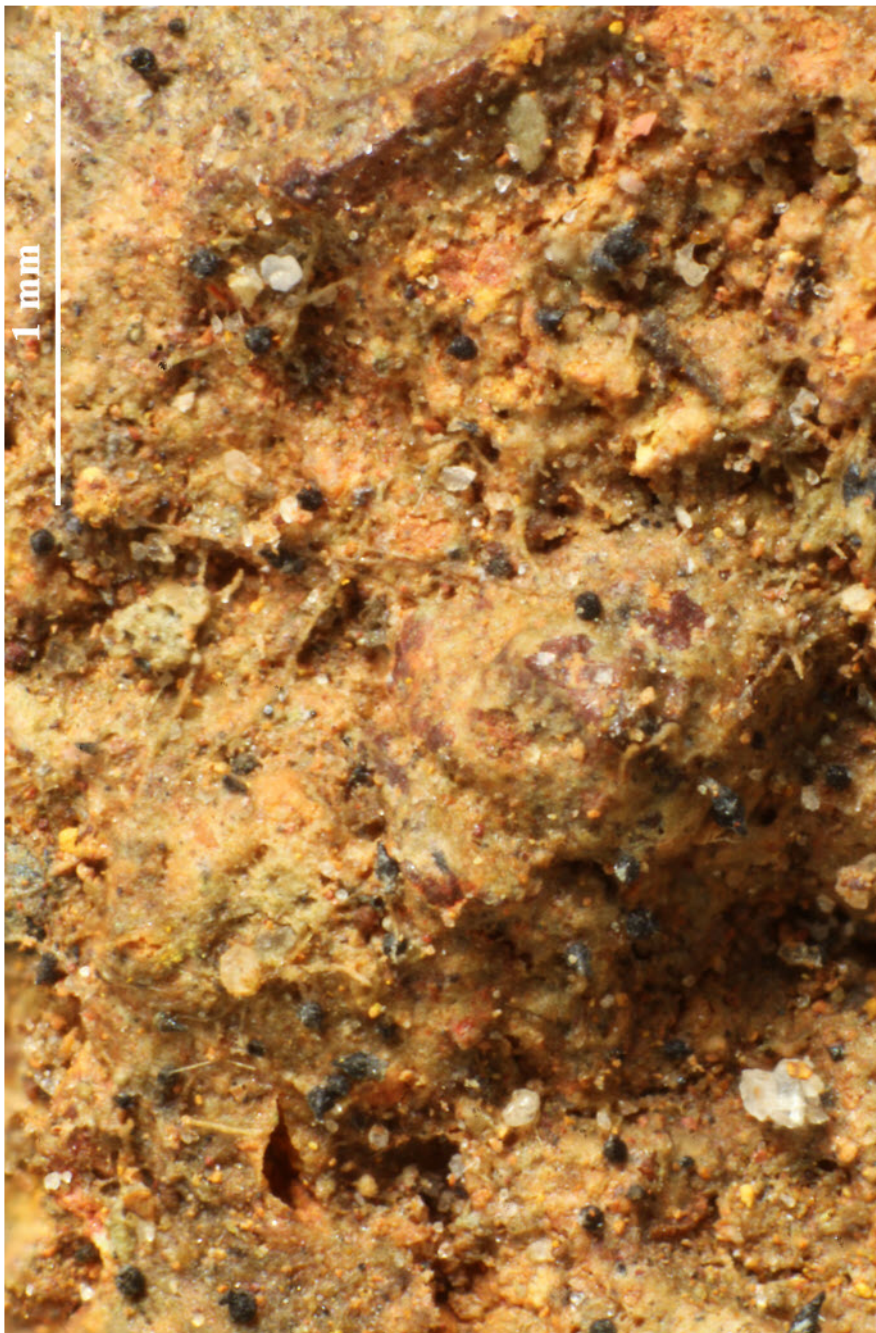
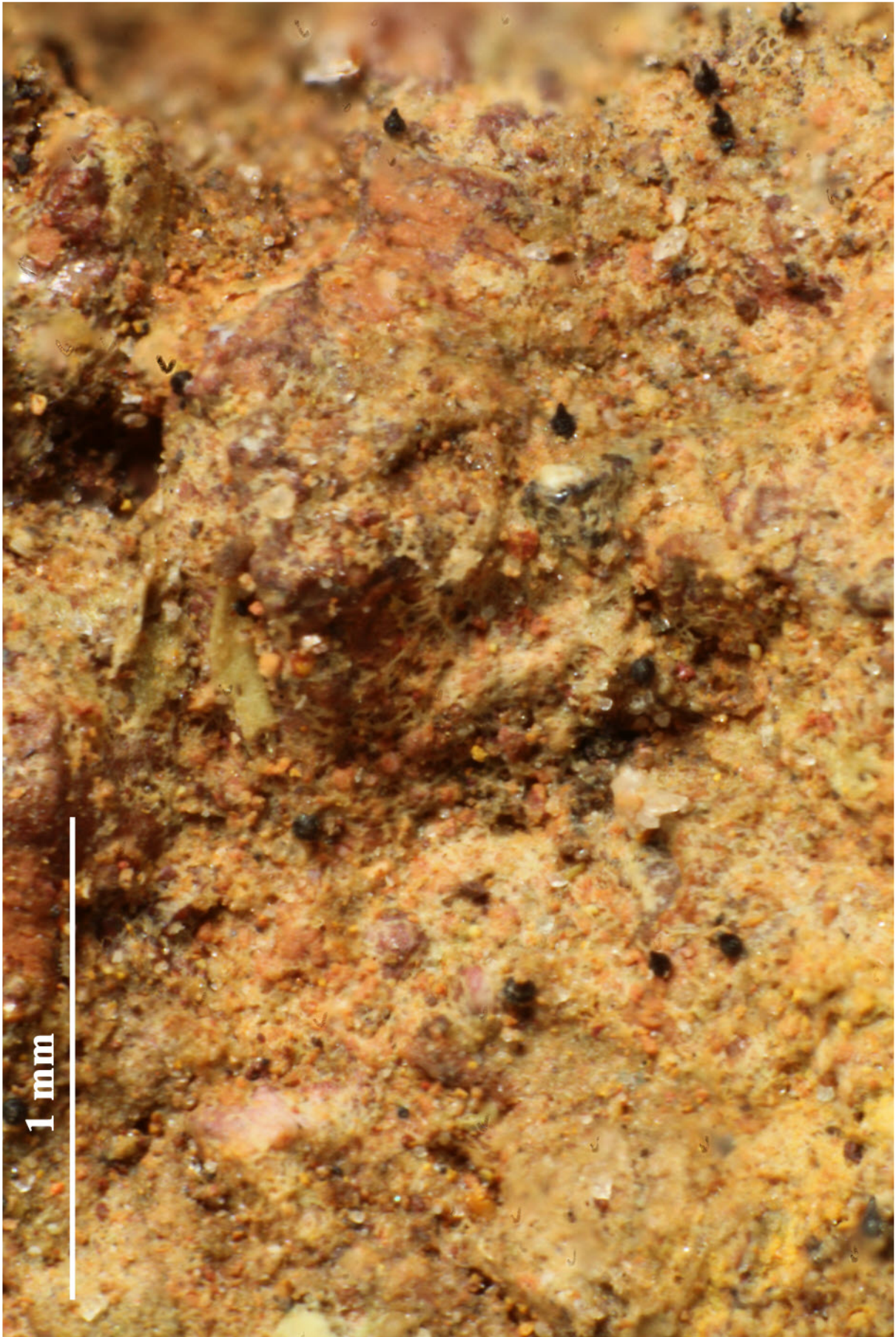


Anisomeridium lateriticum Aptroot & M. Cáceres, Lichenologist 45(6):
765 (2013)

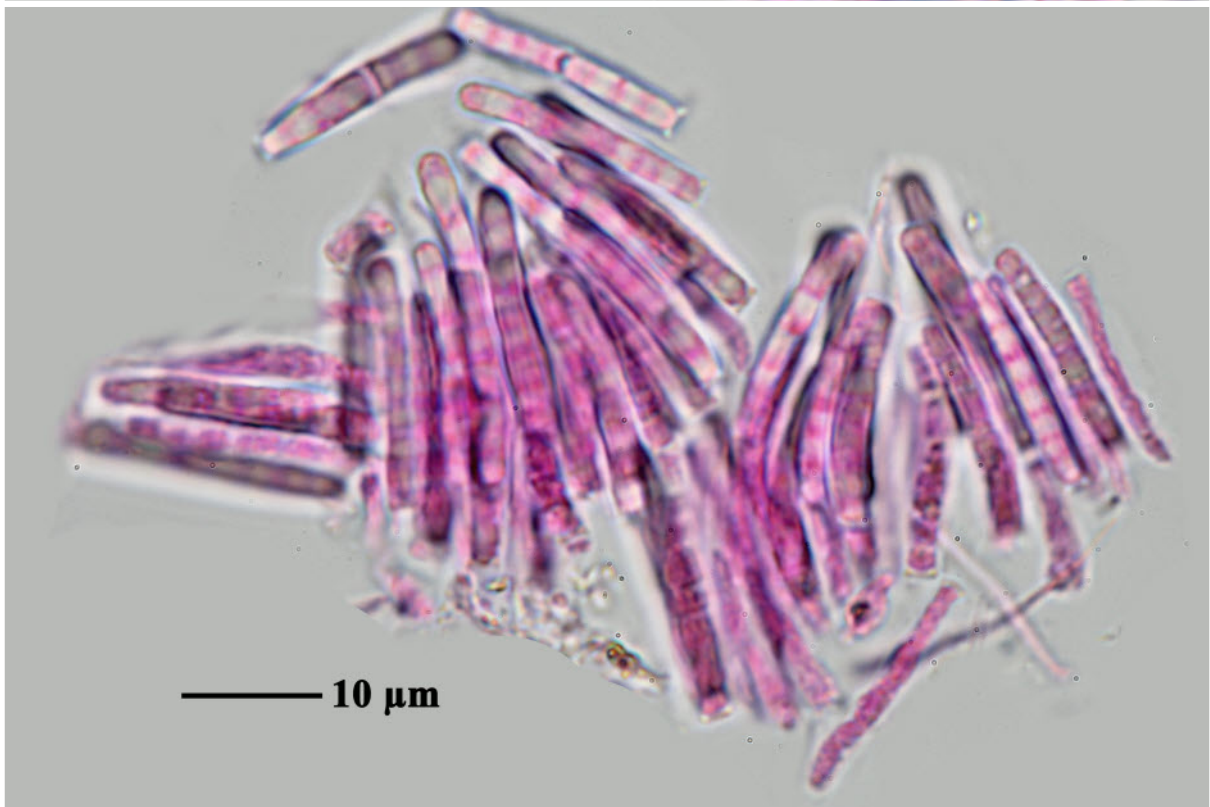
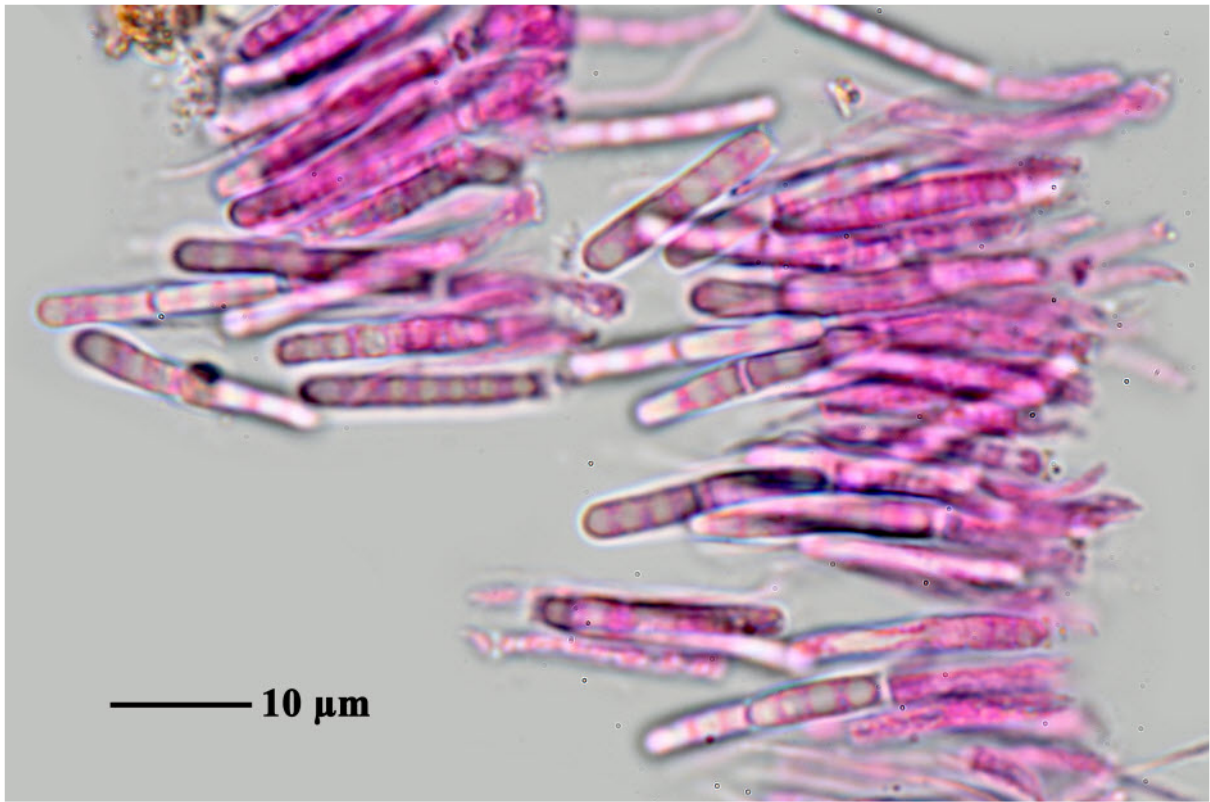
Thallus inconspicuous, brownish grey, very thin, glossy, algae trentepohlioid. Ascomata not observed. Pycnidia sessile, pyriform, black, c. 0.1 mm wide and c. 0.2 mm high. Ostiole with partly brown, partly hyaline septate setae of 20-100 x 4-6 μm . Conidia hyaline, bacillary, simple to 1 septate, 8-11 x 2.0-2.5 μm , often with additional pseudosepta.

[ABL11801], Brazil, Amazonia, Fazenda Sao Francisco off BR319 , 30 km N of Porto Velho. On lateritic rock in primary rain forest. 8°24'33" S, 63°58'56" W, 100 m. Leg. M. Cáceres & A. Aptroot (no 11801), 15.3.2012, det. A. Aptroot, 2012. ISOTYPE.

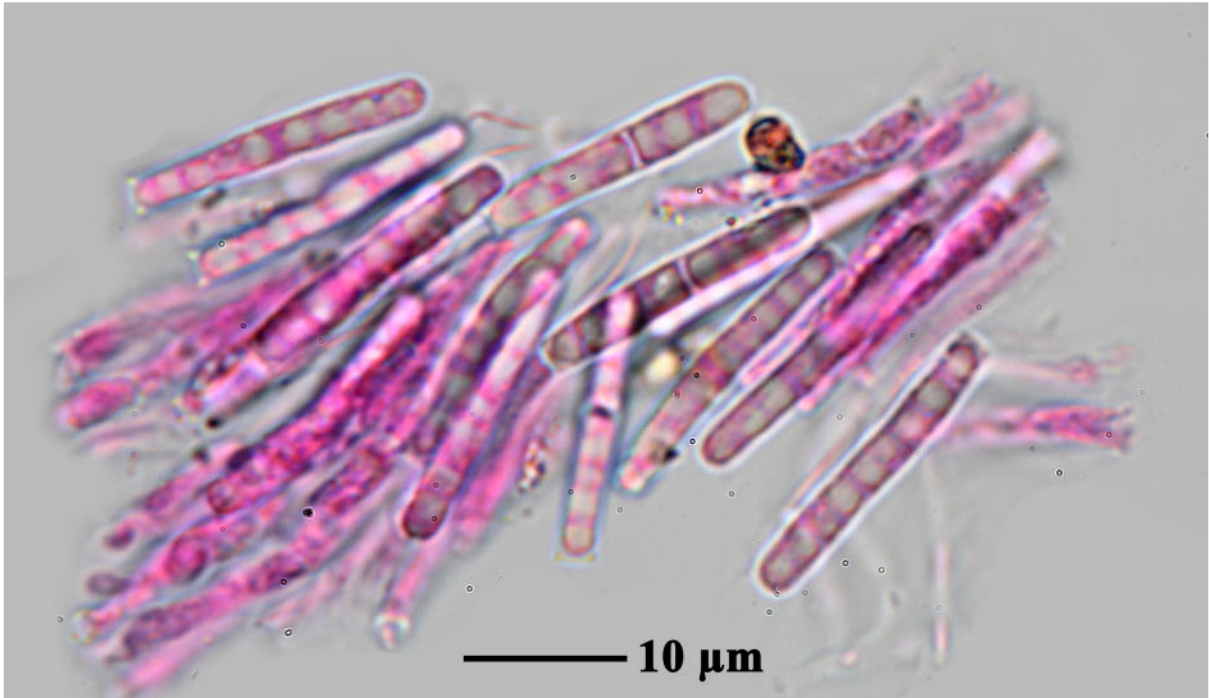




Anisomeridium lateriticum



Anisomeridium lateriticum



Anisomeridium lateriticum