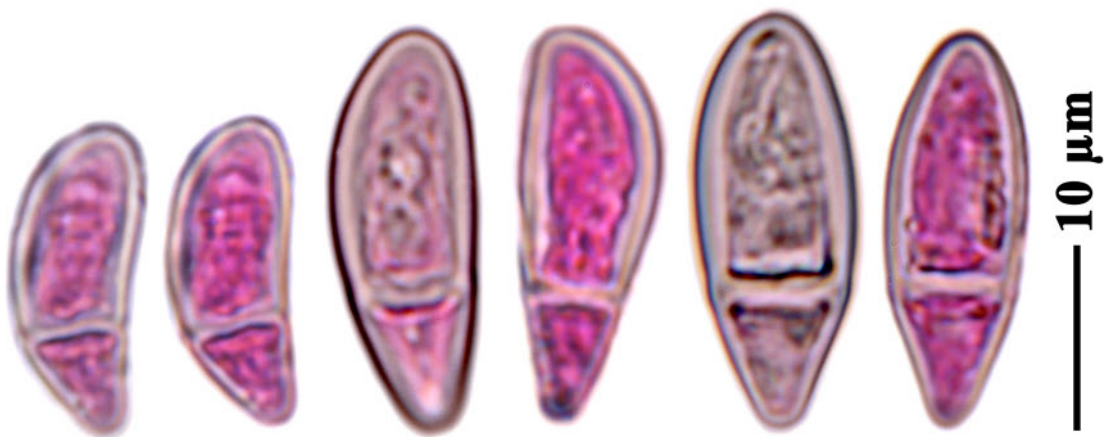
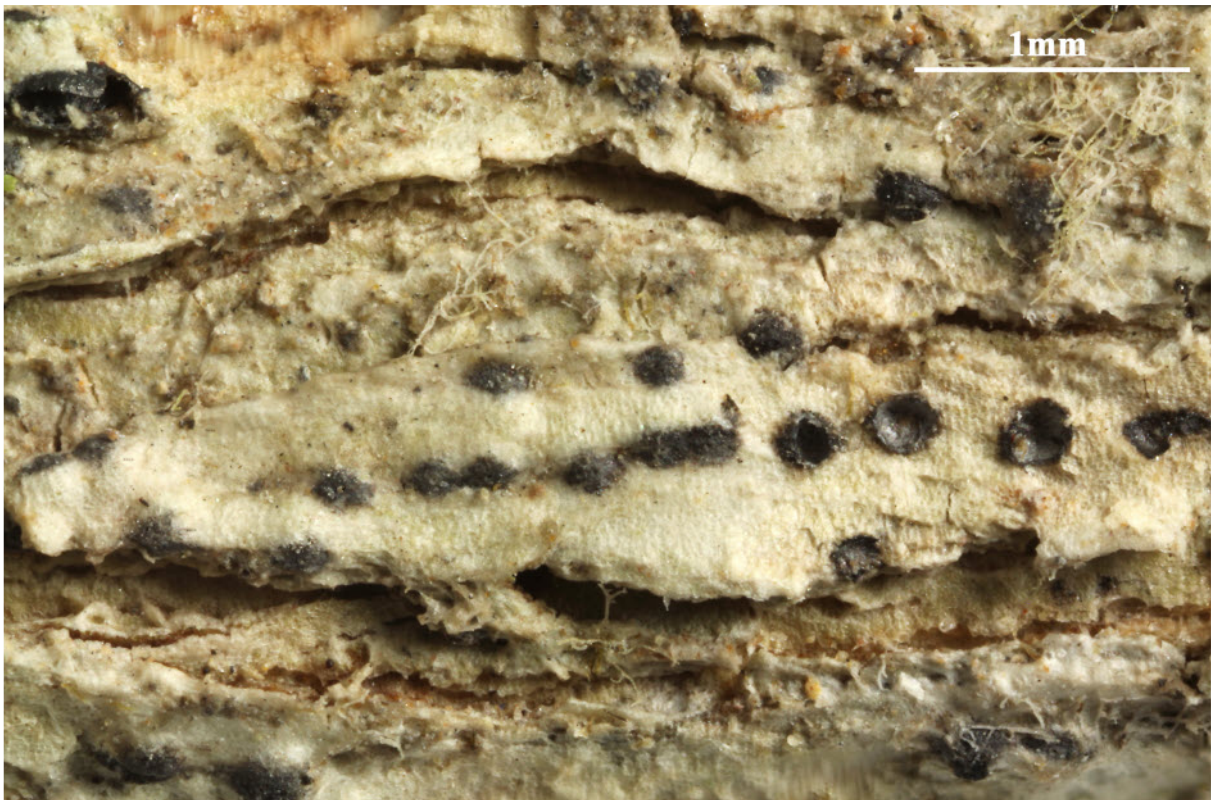


Anisomeridium polycarpum (Müll. Arg.) R.C. Harris, More Florida
Lichens, Incl. 10 Cent Tour Pyrenol. (New York): 149 (1995)
= *Pleurotrema polycarpum* Müll. Arg. 1893

Thallus endophloeodal, not corticate, whitish to greyish, UV-. Ostiole excentric. Ascospores 8/ascus, fusiform, 1-septate, smooth, hyaline, septum \pm median, 23-29 x 7.5-8 μ m. Microconidia ellipsoid, c. 2.5 x 1.5 μ m.

[ABL21921], Brazil, Pernambuco, Caruaru, Brejo dos Calvalos, on tree bark in mountain forest, 8°20' S, 35°58' W, 800 m. Leg. M. Cáceres & A. Aptroot (no 21921), 16.09.2014, det. A. Aptroot 2014.





Anisomeridium polycarpum