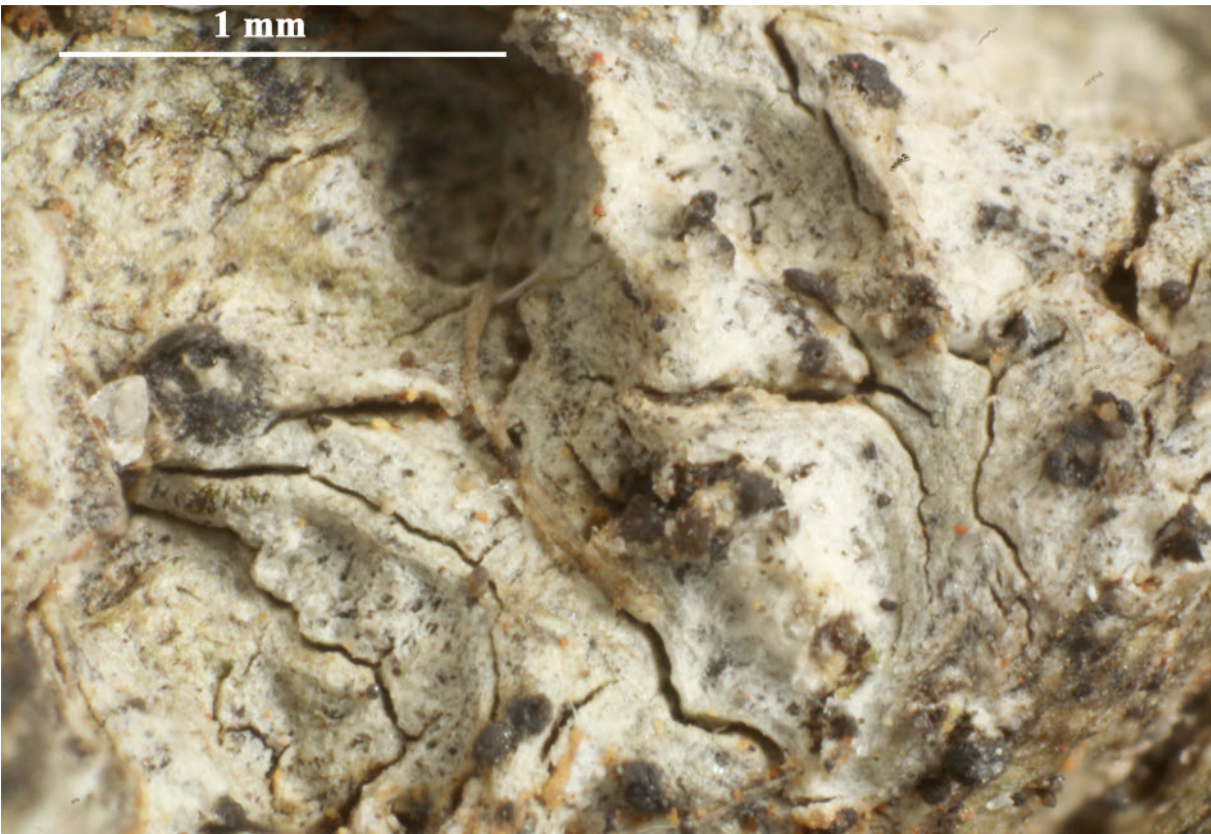


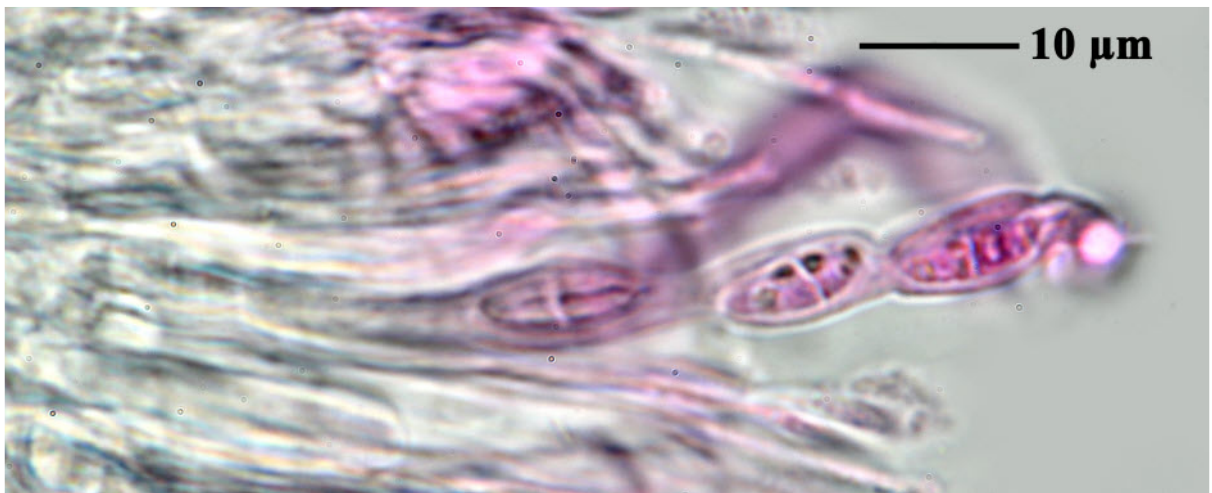
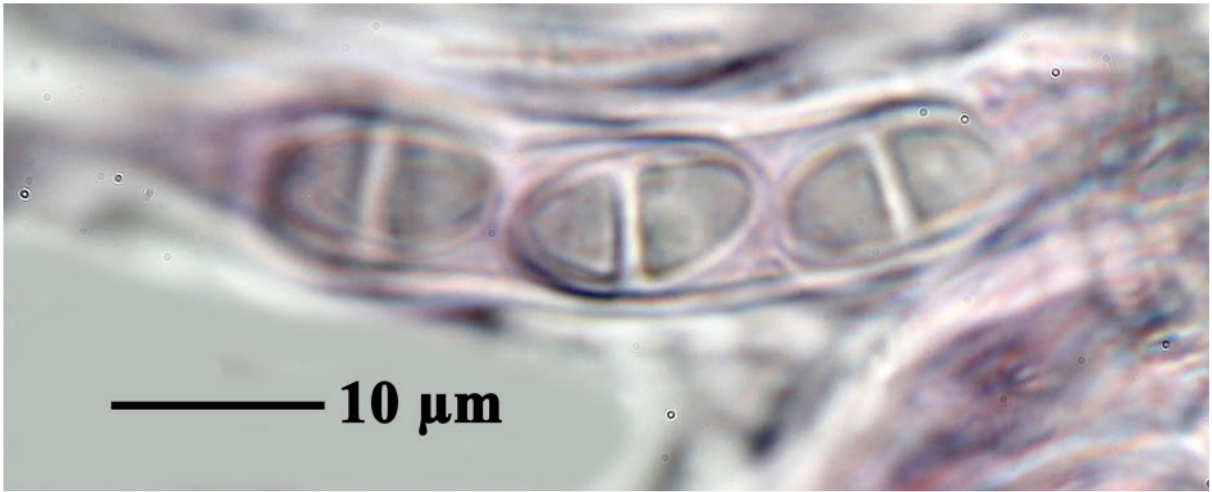
- Anisomeridium polypori* (Ellis & Everh.) M.E. Barr, in Barr, Huhndorf & Rogerson, Mem. N. Y. bot. Gdn 79: 76 (1996)
 = *Anisomeridium juistense* (Erichsen) R.C. Harris, in Hawksworth, James & Coppins, Lichenologist 12(1): 106 (1980)
 = *Anisomeridium nyssigenum* (Ellis & Everh.) R.C. Harris [as 'nyssaegenum'], Evansia 2(3): 44 (1985)
 = *Anisomeridium willeyanum* (R.C. Harris) R.C. Harris [as 'willeyana'], in Brodo, Syllogeus 29: 34 (1981)
 = *Apiospora polypori* Ellis & Everh., N. Amer. Pyren. (Newfield): 311 (1892)
 = *Apiosporella polypori* (Ellis & Everh.) Höhn., Sber. Akad. Wiss. Wien, Math.-naturw. Kl., Abt. 1 118: 1215 (1909)
 = *Arthopyrenia willeyana* R.C. Harris, Michigan Bot. 12(1): 16 (1973)
 = *Ditremis nyssigena* (Ellis & Everh.) R.C. Harris [as 'nyssaegena'], Some Florida Lichens (New York): 33 (1990)
 = *Paraphysothele juistensis* (Erichsen) Servít, Rozpr. Českoslov. Akad. Véd. Ročn. 65(no. 3): 28 (1955)
 = *Sarcinulella banksiae* B. Sutton & Alcorn, Mycotaxon 16(2): 558 (1983)
 = *Thelidium juistense* Erichsen, Mitt. Inst. Allg. Bot. Hamburg 10: 403 (1939)
 = *Zignoella nyssigena* Ellis & Everh. [as 'nyssaegena'], Proc. Acad. nat. Sci. Philad. 45: 137 (1893)

Thallus very thin and inconspicuous, scarcely distinguishable from the bark. Ascomata up to 0.25 mm diam., frequently absent when the species may be recognized by the usually abundant small (0.1-0.2 mm) pycnidia which are conical and with nibble- or peg-like tips and conglutinated conidia. Ascospores hyaline, 8/ascus, 1(-3) septate, 15-20 x 4-5 µm.

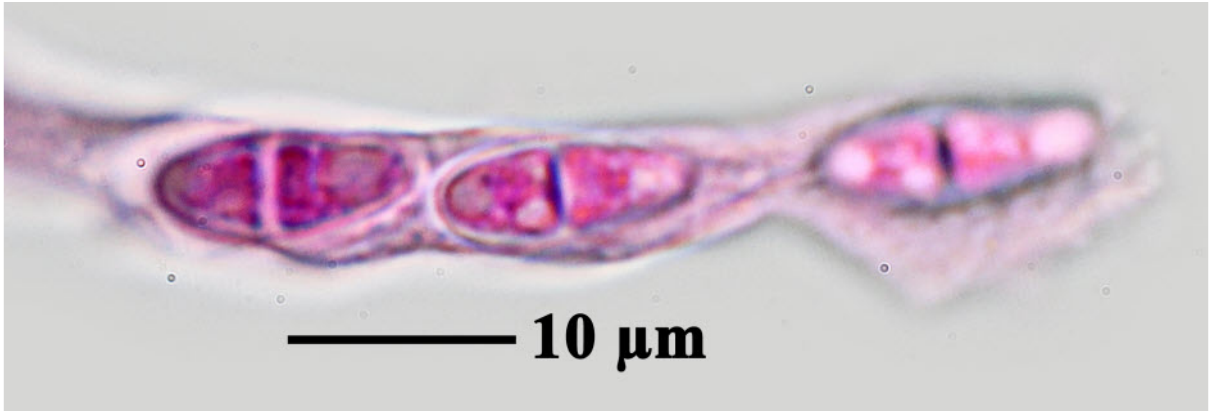
[ABL13689], Brazil, Sao Paulo, Botucatu, Botanical garden on campus, on bark in park, 22°53'09" S, 48°29'56" W, 850 m. Leg. M. Cáceres & A. Aptroot (no 13689), 13.9.2012, det. A. Aptroot 2012.



Anisomeridium polypori



Anisomeridium polypori



Anisomeridium polypori