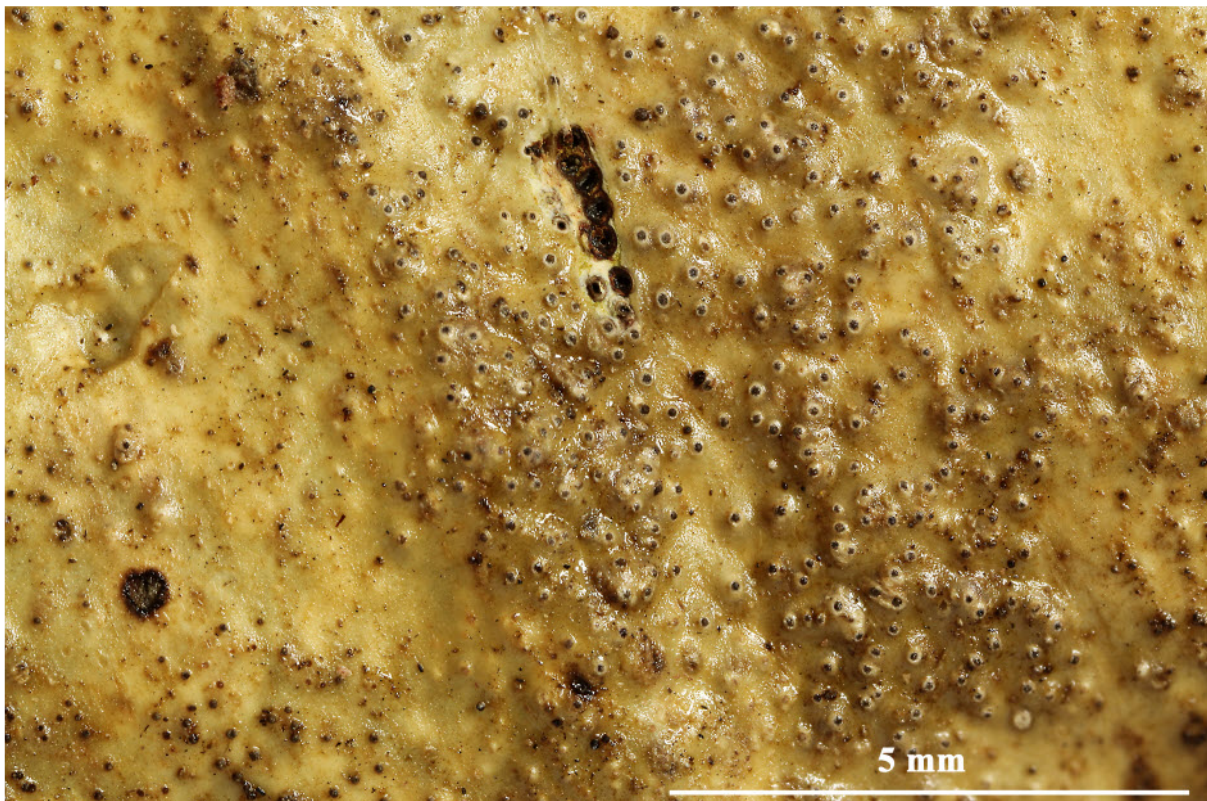


- Astrothelium cartilagineum* (Fée) Aptroot & Lücking, Lichenologist 48(6): 851 (2016)  
= *Pyrenula cartilaginea* Fée, Essai Crypt. Exot. (Paris): 77 (1825) [1824]  
= *Segestria porinoides* var. *cartilaginea* (Fée) Trevis., Conspect. Verruc.: 6 (1860)  
= *Trypethelium cartilagineum* (Fée) Aptroot, in Aptroot, Lücking, Sipman, Umaña & Chaves, Bibliotheca Lichenol. 97: 134 (2008)  
= *Verrucaria cartilaginea* (Fée) Spreng., Syst. veg., Edn 16 4(1): 245 (1827)

Thallus corticate, brownish, smooth to uneven. Ascomata with apical ostioles, solitary to irregularly confluent, 0.4-0.5 mm diam., immersed to erumpent, covered by thallus except for dark ostiole surrounded by pale rim, internally with hyaline or red, K+ red crystals. Hamathecium clear. Ascospores 8/ascus, 3-septate, hyaline, 32-47 x 14-16 µm, IKI-. Chemistry: thallus and ascomata UV-, K-; ascomata internally K+ red, with anthraquinone.

[ABLISE48616], Brazil, Bahia, Itamarajú, Monte Pascual, on tree bark in cerrado forest, 16°51'55" S, 39°24'54" W, 130m. Leg M. Cáceres & A. Aptroot (no ISE 48616), 18.02.2019, det. A. Aptroot, 2019.







*Astrothelium cartilagineum*