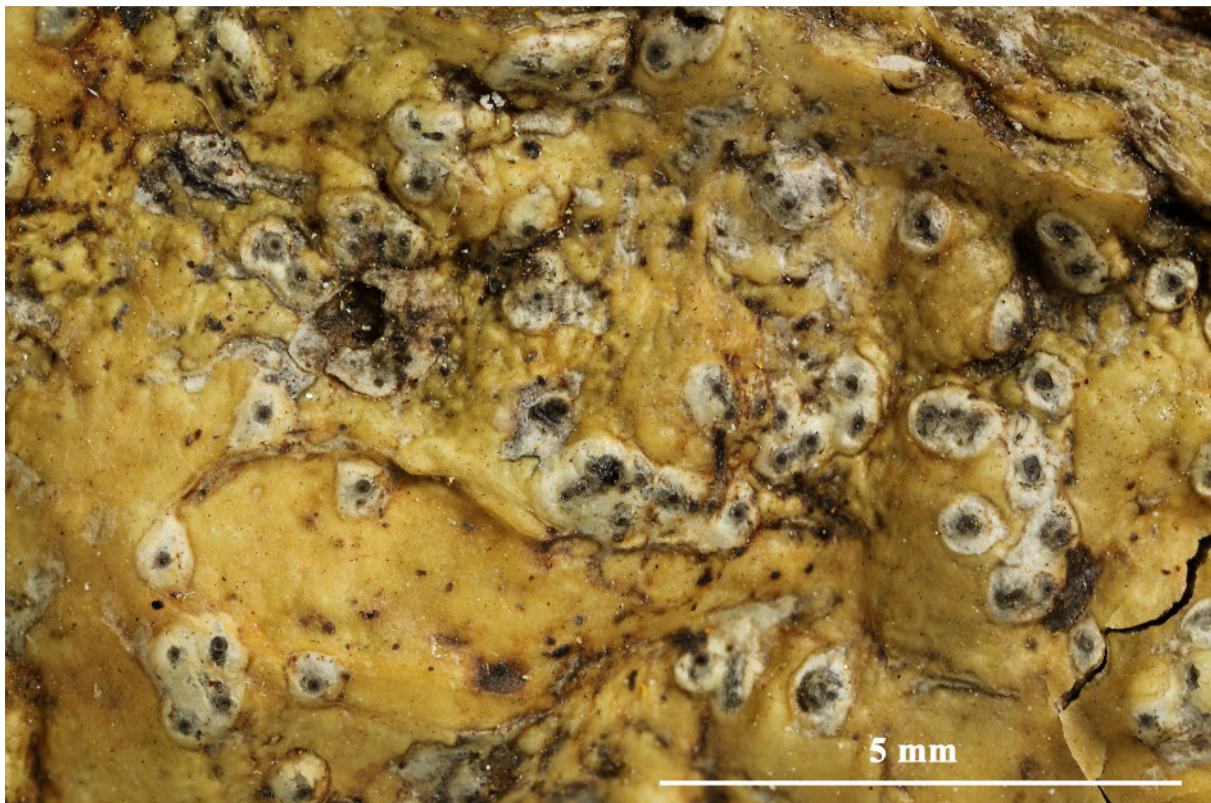


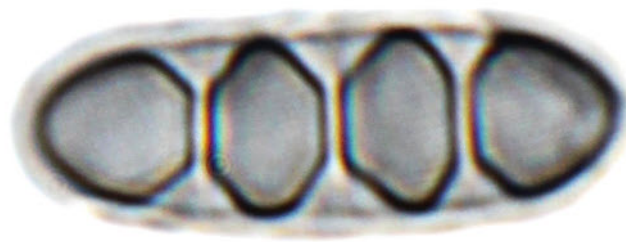
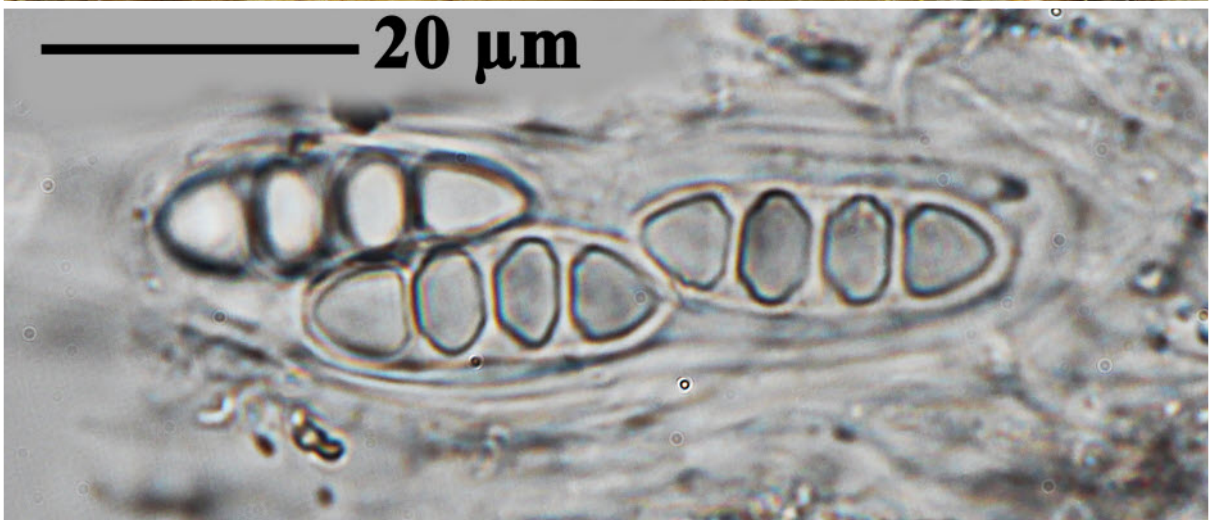
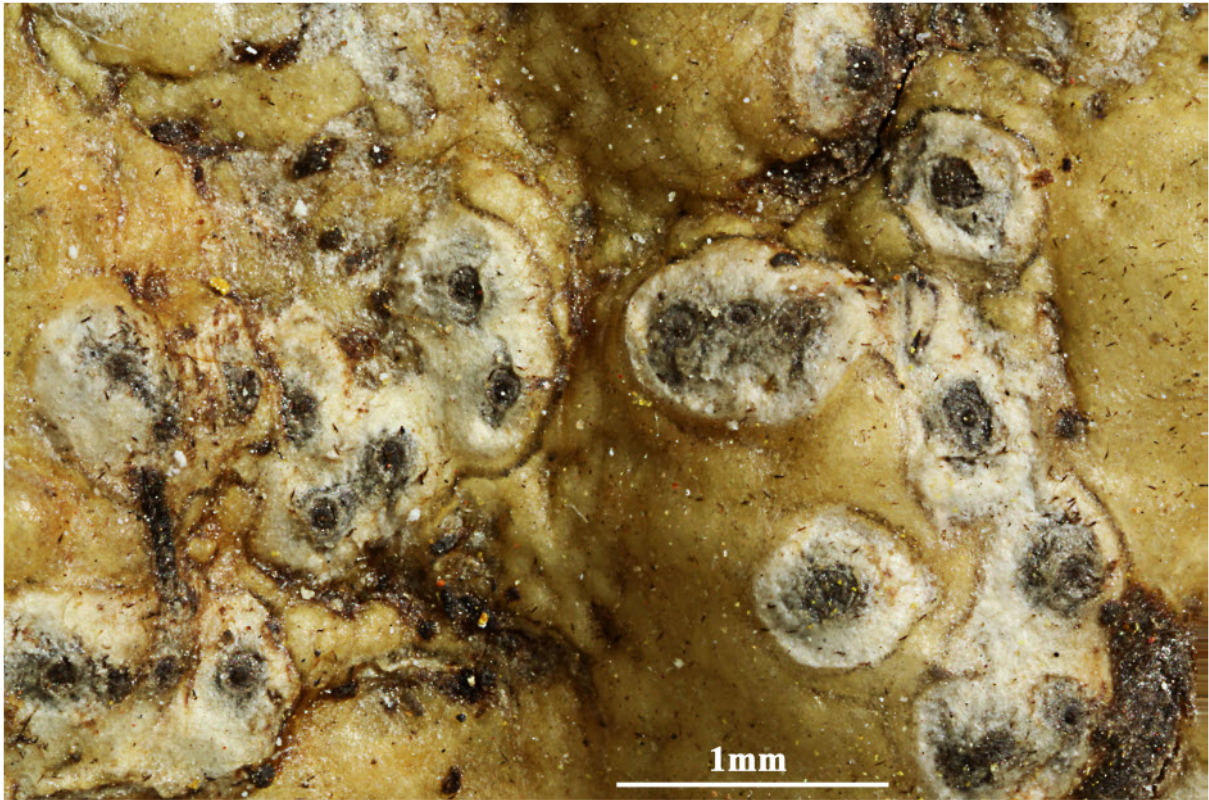
*Astrothelium conjugatum* Weerakoon & Aptroot, Phytotaxa 280(2): 153 (2016)

*Thallus* corticate, pale yellowish brown, rather smooth, covering an area of up to 7 cm diam., without prothallus. *Ascomata* c. 0.5–0.7 mm diam., pyriform, astrothelioid, 2–8 chambers joined with eccentric, fused ostioles; 3–10 fused ascomata grouped within one pseudostroma; pseudostromata c. 1–5 mm diam., erumpent to prominent, with irregularly lobate to linear outline, completely covered by a thallus layer that is thick and opaque at the sides, and can be similar on top or thinner and translucent, in which case the black ascoma wall is visible through it; with tiny brown ostioles. *Hamathecium* clear but sparsely interspersed with hyaline oil droplets. *Ascospores* 8/ascus, hyaline, 3-septate, fusiform-ellipsoid, 20–25 × 6.5–7.5 µm, hyaline, IKI–, lumina diamond-shaped when mature. *Pycnidia* not observed. *Chemistry*. Thallus and pseudostroma UV–, K–. TLC: No substances detected. ISOTYPE.

[WeerakoonRi01F], Sri Lanka, Rilhena, on tree. on bark of tree. Leg. G. Weerakoon & P. Wolseley (no Ri01F), 9 February 2015, det. A. Aptroot, 2016.

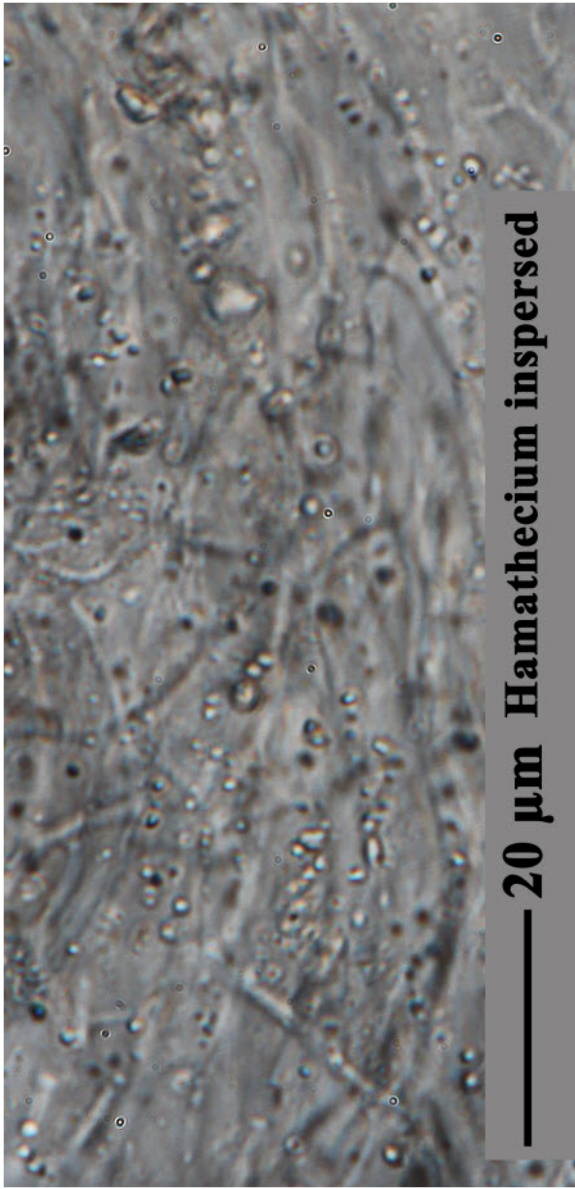






*Astrothelium conjugatum*





*Astrothelium conjugatum*