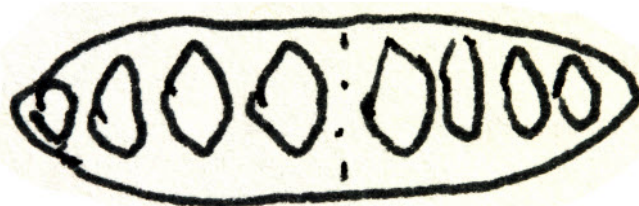


Astrothelium galligenum (Aptroot) Aptroot & Lücking, Lichenologist
48(6): 861 (2016)

= *Trypethelium galligenum* Aptroot, Trop. Bryol. 14: 29 (1998)

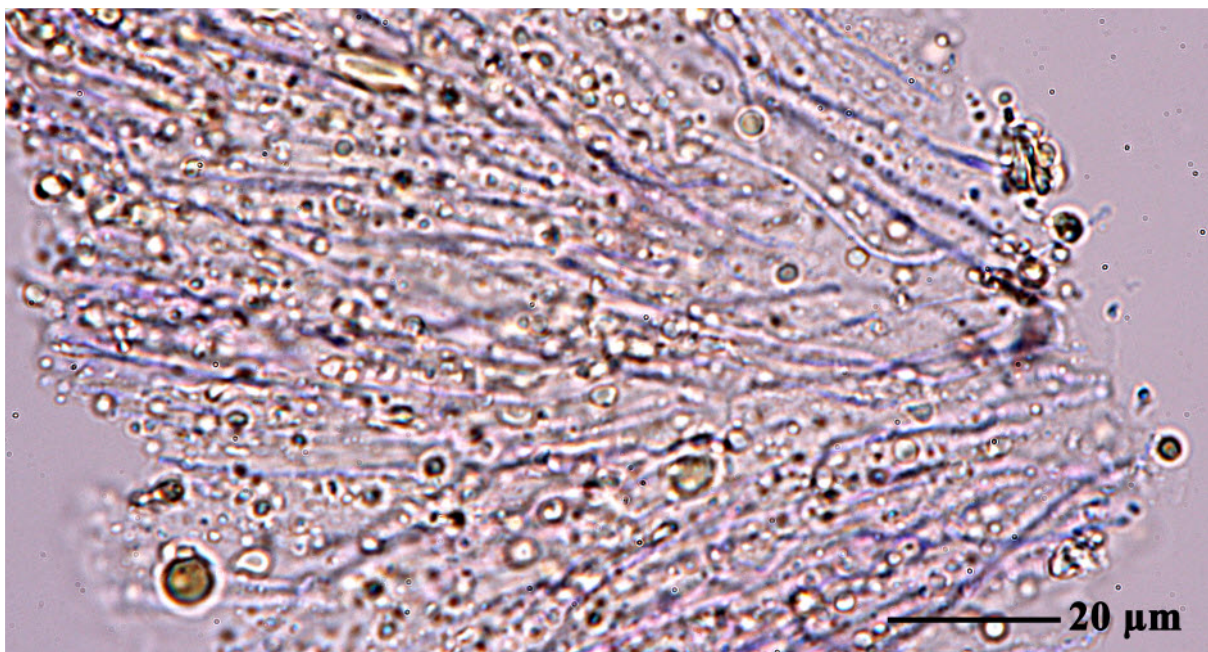
Thallus pale greenish, uneven to bullate. Ascomata with apical blackish ostioles surrounded by a brown rim. Hamathecium interspersed with yellow, K+ purple oil. Ascospores 8/ascus, 7 septate, 50-60 µm, central septum euseptate and wider, hyaline IKI-. Chemistry: thallus UV-, K-; hamathecium with anthraquinone.

[ABL 39461], Papua New Guinea, Central Province, Owen Stanley Range, Kagi village, along Kokoda Trail towards Gap. 9°08' S, 147°40' E, 1700 m. Lithocarpus forest on mountain ridge. Leg. A. Aptroot (no 39451), 20.-21.10.1995, det. A. Aptroot 1996. HOLOTYPE.





Astrothelium galligenum



Astrothelium galligenum