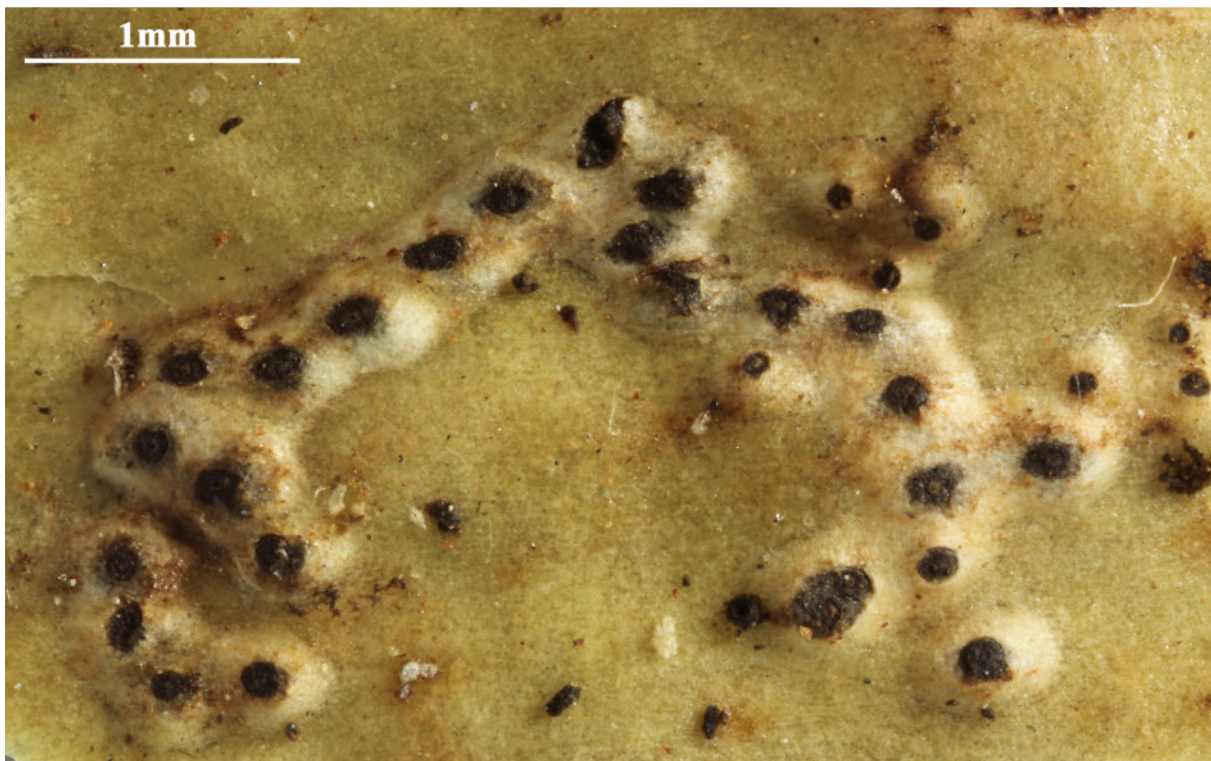


*Astrothelium pupula* (Ach.) Aptroot & Lücking, Lichenologist 48(6): 882 (2016)  
= *Ocellularia pupula* (Ach.) Spreng., Syst. veg., Edn 16 4(1): 242 (1827)  
= *Pseudopyrenula pupula* (Ach.) Müll. Arg., Flora, Regensburg 68: 331, 338 (1885)  
= *Pyrenula pupula* Ach., Syn. meth. lich. (Lund): 123 (1814)  
= *Segestria pupula* (Ach.) Trevis., Conspect. Verruc.: 6 (1860)  
= *Trypethelium pupula* (Ach.) R.C. Harris, Lichenogr. Thomsoniana, North American Lichenology in Honor of John W. Thomson (Ithaca): 146 (1998)

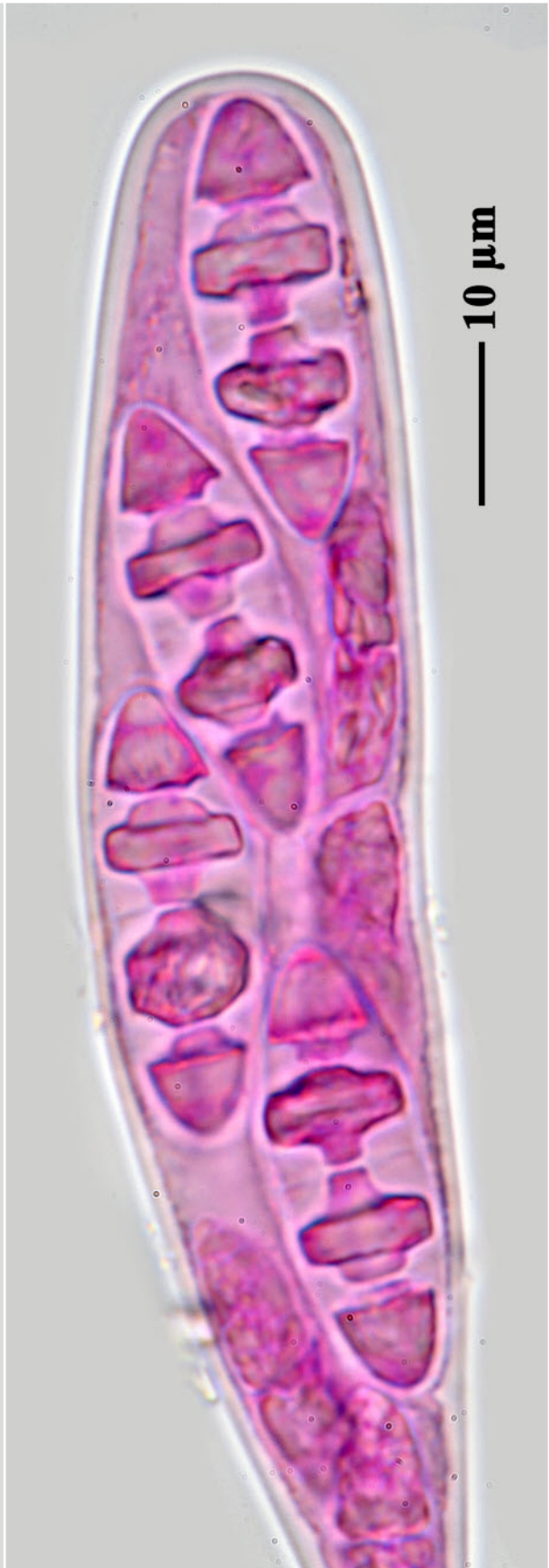
Thallus corticate, greyish green to yellowish (luichexanthone colour), smooth to uneven. Ascomata trypethelioid, with apical ostioles, solitary, 0.4-0.6 mm diam., erumpent, covered by thallus except for blackish ostiolar area. Hamathecium clear. Ascospores 8/ascus, fusiform-ellipsoid, 3-septate, 33-40 x 10-13  $\mu$ m, hyaline, IKI-. Chemistry: Thallus and ascomata UV+yellow, K-. TLC: lichexanthone.

[ABL40918], Brazil, Minas Gerais, Catas Altas, Serra do Caraça, Parque Natural do Caraça, near football field near monastery Santuário do Caraça, on tree. 1250 m, 20°06' S, 43°29' W. Leg. A. Aptroot (no 40918), m 16.9.1997, det. A. Aptroot, 1998.





*Astrothelium pupula*



*Astrothelium pupula*