

Astrothelium sphaerioides (Mont.) Aptroot & Lücking, Lichenologist
48(6): 888 (2016)

= *Bathelium sphaerioides* (Mont.) Trevis., Flora, Regensburg 44: 21 (1861)

= *Laurera sphaerioides* (Mont.) Zahlbr., Cat. Lich. Univers. 1: 506 (1922)

= *Trypethelium sphaerioides* Mont., Annls Sci. Nat., Bot., sér. 2 19: 73 (1843)

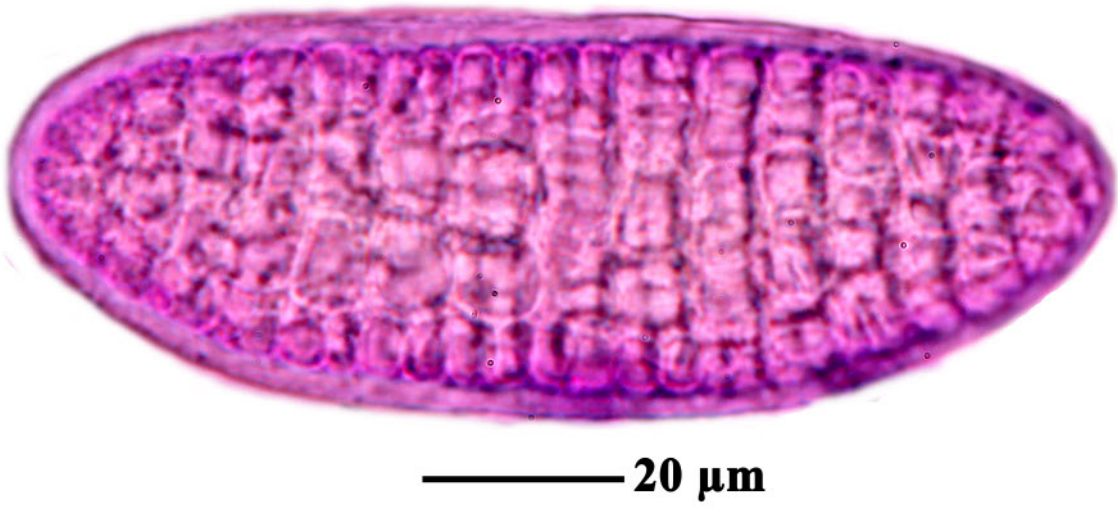
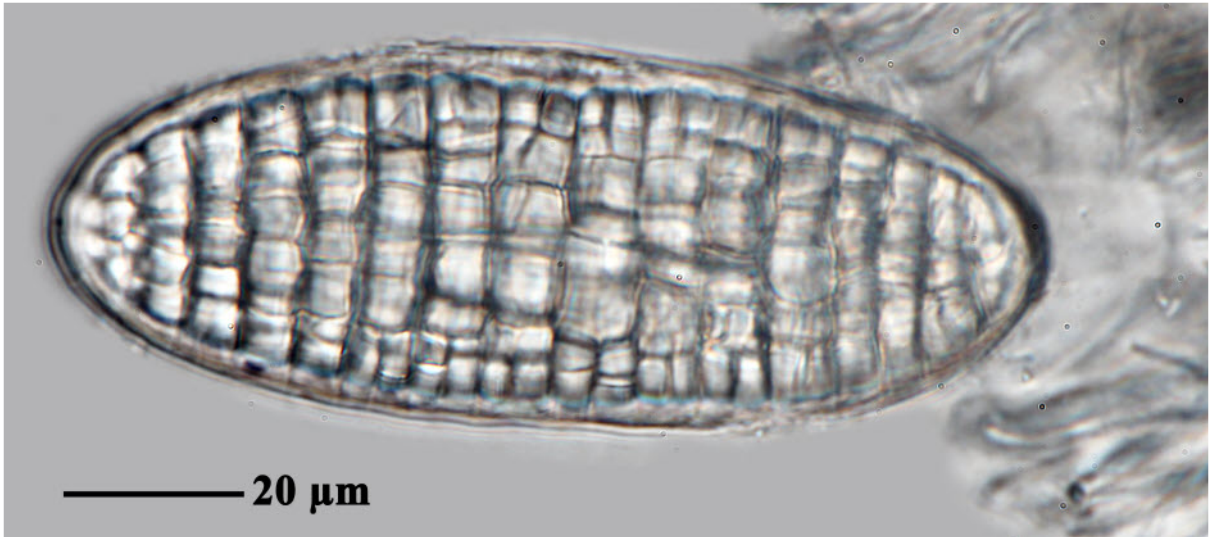
Thallus corticate, olive-green to brownish, smooth to uneven. Ascomata with apical to excentric, separate ostioles, distinctly pseudostromatic, 0.5-1.5 mm broad, erumpent to prominent, whitish and black ostioles. Hamathecium clear. Ascospores 2-4/ascus, muriform, ellipsoid, 80-175 x 25-50 μm , without distinctly thickened median septum, hyaline, IKI-. Chemistry: thallus and pseudostromata UV-, K-. TLC: no substances detected.

[Etayo30235], Panamá.Veraguas, Bahía Honda, playa del Sol (campamento) con magnos y cocos, 0 m (Ver, Pan). Tronco inde, en playa. Leg. J. Etayo, (no 30255), 1.08.2001, det. A. Aptroot.





Astrothelium sphaerioides



Astrothelium sphaerioides