

Astrothelium subdiscretum (Nyl.) Aptroot & Lücking, Lichenologist 48(6): 890 (2016)

= *Bathelium subdiscretum* (Nyl.) Müll. Arg., Bot. Jb. 6: 395 (1885)

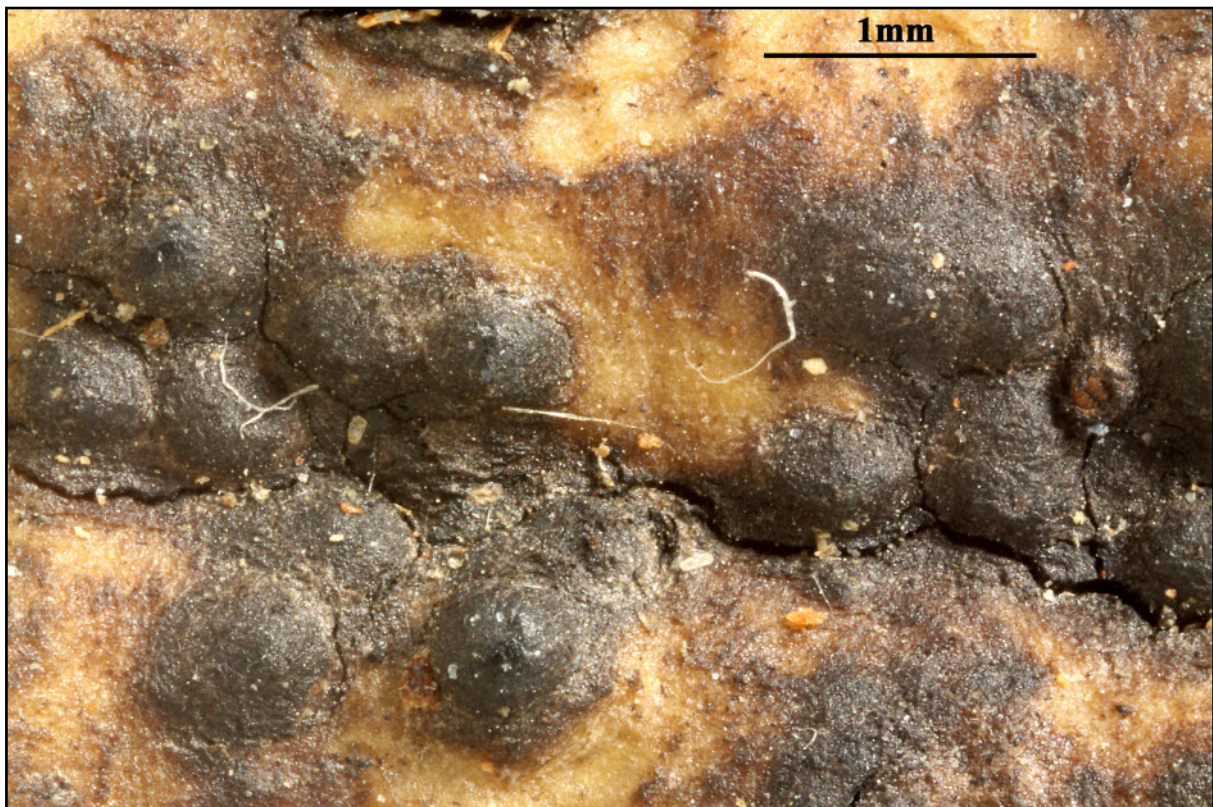
= *Laurera subdiscreta* (Nyl.) Zahlbr., Cat. Lich. Univers. 1: 506 (1922)

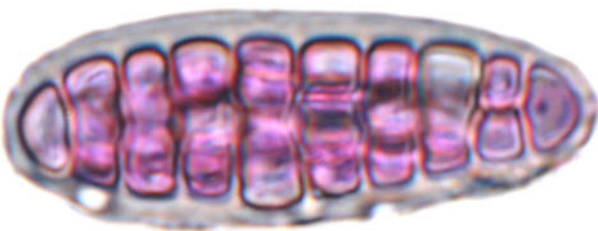
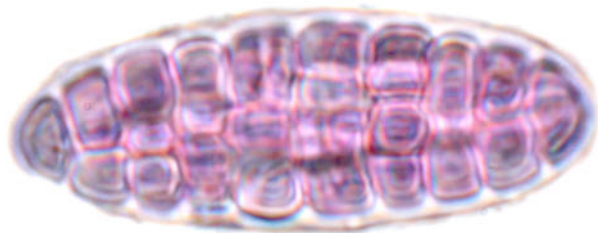
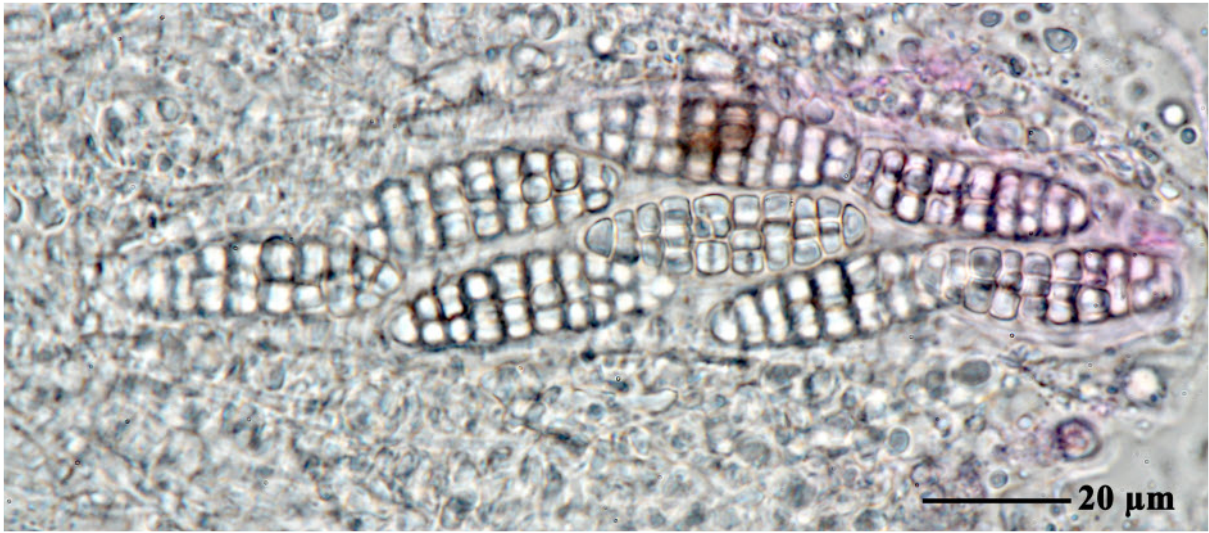
= *Trypethelium subdiscretum* Nyl., Flora, Regensburg 52: 73 (1869)

= *Laurera verrucoaggregata* Makhija & Patw., Mycotaxon 31:586 (1988).

Thallus corticate, olive-green to brownish, uneven to verrucose-rugulose. Ascomata trypethelioid, with apical ostioles, pseudostromatic; pseudostromata 0.8-1.5(-2.0) mm broad, immersed-erumpent, irregular to linear and often confluent and reticulate, with ascomata exposed and black. Hamathecium interspersed or clear. Ascospores 8/ascus, muriforme, 35-50 x 12-18 μm , without distinctly thickened median septum, hyaline, IKI-. Chemistry: Thallus and pseudostromata UV-, K-. TLC: no substances detected.

[AMH86550], India, Andaman Islands, North Andaman, Lamia Bay, leg. Nagarkar (no AMH 86559) & Sethy, 5.1. 1986. ISOTYPE of *Laurera verrucoaggregata* Makhija & Patw.





Astrothelium subdiscretum