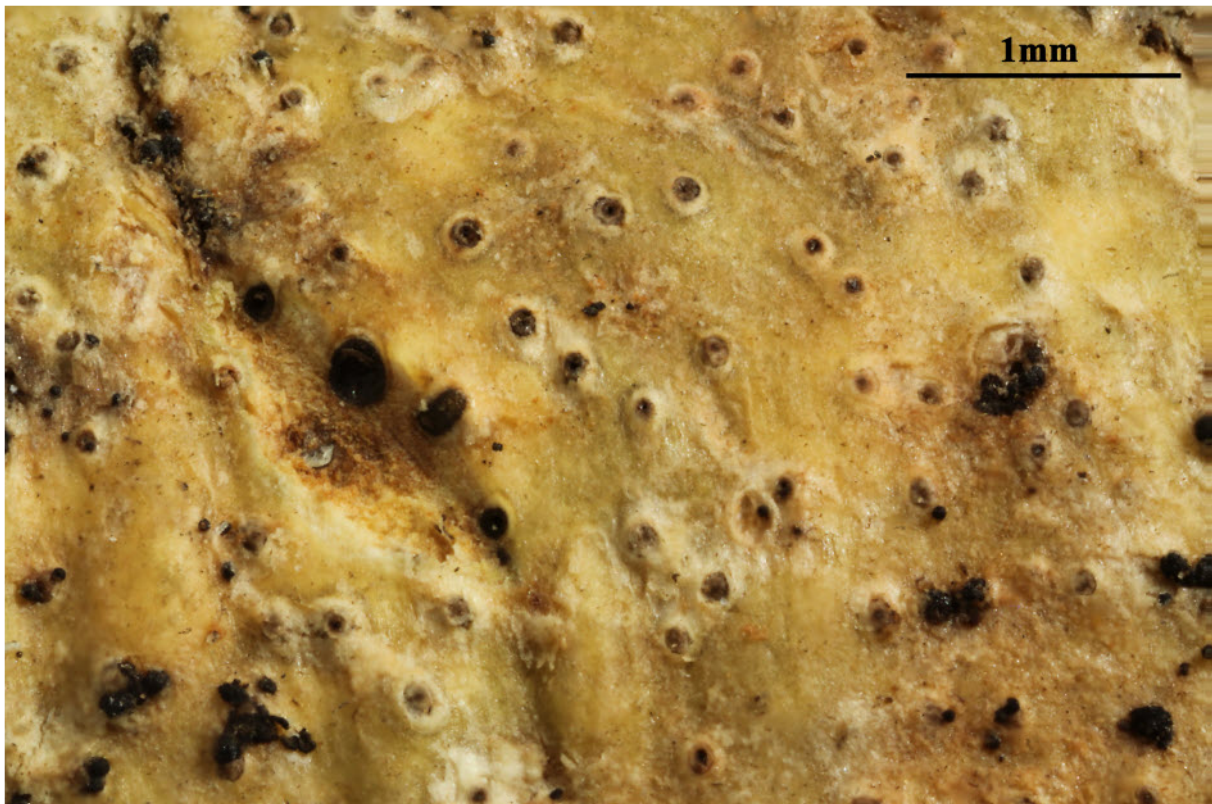


Astrothelium subscoria Flakus & Aptroot, in Flakus, Kukwa & Aptroot, Lichenologist 48(6): 674 (2016)

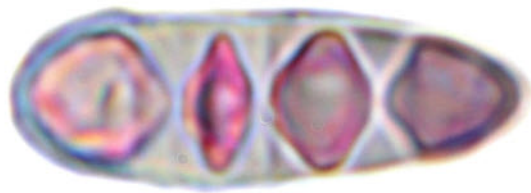
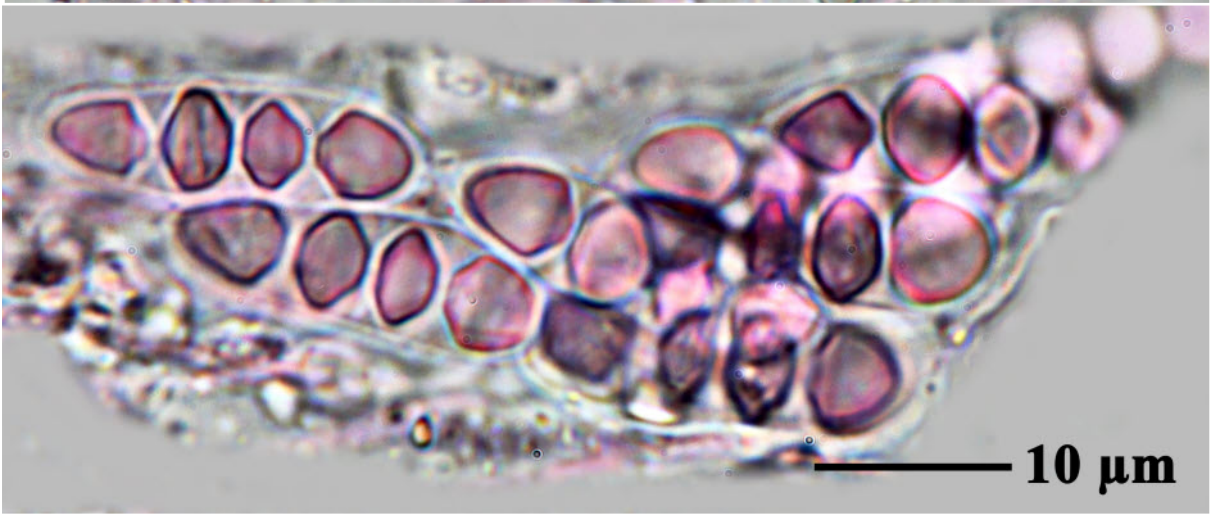
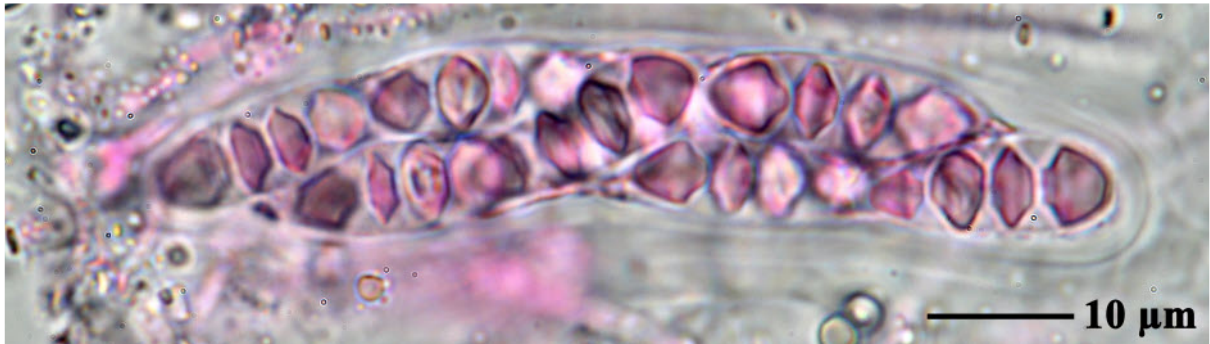
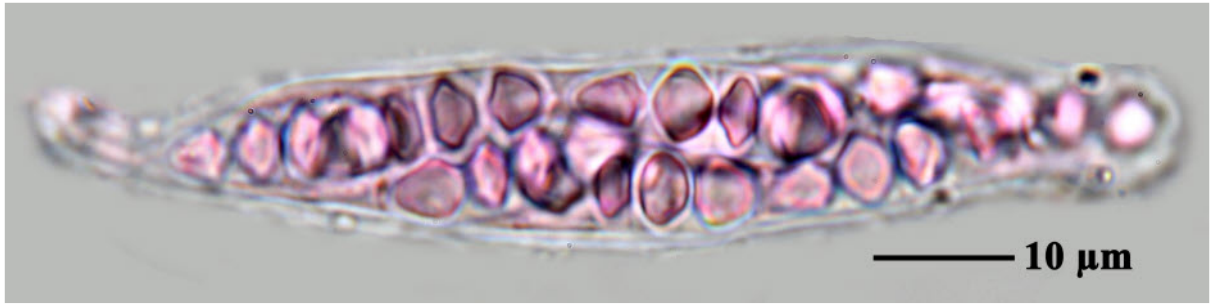
Thalus corticate, with corticiformn layer $\leq 30 \mu\text{m}$ thick, smooth, somewhat shiny, continuous, not including swellings of the host bark, greyish green, surrounded by a black prothallus. Ascomata subglobose, 0.2-0.4 mm diam., single, immersed in the thallus, ascomatal verrucae with a surface different from the thallus, not distinctly raised above thallus, hemispherical, with sloping sides, white, inside without a coloured layer, thalline cover without black tissues, but ascomata often immersed in the bark. Wall fully but not strongly carbonized, not differentiated into excipulum and involucrellum. Ostioles apical, not fused, flat, grey, surrounded by a white spot. Hamathecium interspersed with hyaline oil globules. Ascospores 8/ascus, hyaline, 3 septate, narrowly ellipsoid, $21\text{-}28 \times 8\text{-}10 \mu\text{m}$, ends rounded, lumina diamond-shaped, surrounded by a gelatinous $\leq 2 \mu\text{m}$ thick. Chemistry: All parts UV-, K-. TLC: no secondary substances detected.

[ABL60282], Costa Rica, Prov. Limón, Hitoy Cere Reserve, near Pandora, 40 km S of Limón, $83^{\circ}02''$ W, $9^{\circ}40'$ N, 150 m, on Inga tree along access road. Leg. A. Aptroot (no 60282), 10.03.2004, det. A. Aptroot, 2004.





Astrothelium subscoria



Astrothelium subscoria