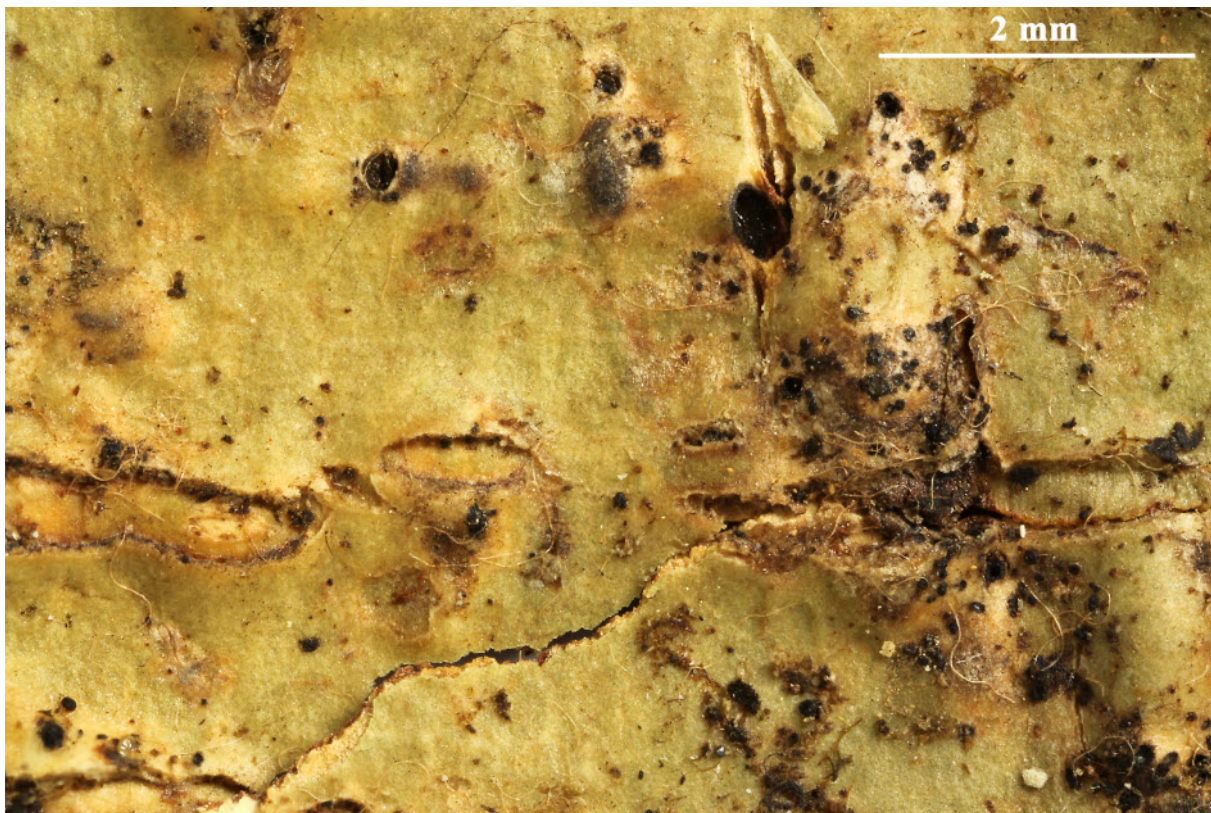


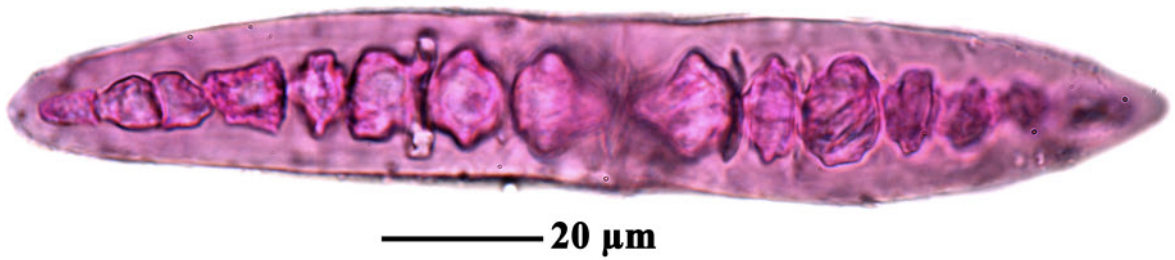
*Astrothelium tenue* (Aptroot) Aptroot & Lücking, Lichenologist 48(6): 891 (2016)

= *Campylothelium tenue* Aptroot, in Aptroot, Lücking, Sipman, Umaña & Chaves, Bibliothca Lichenol. 97: 53 (2008)

Thallus corticate, olive-green, smooth to uneven. Ascomata pleurotheloid, with excentric separate ostioles, 0.4-0.7 mm diam., erumpent, completely covered by thallus. Hamathecium clear. Ascospores 4-8/ascus, muriform, fusiform, 95-115 x 20-28  $\mu\text{m}$ , with distinctly thickened median septum, hyaline, IKI-. Chemistry: Thallus and pseudostromata UV-, K-. TLC: no substances detected.

[Bleij], Guyana, Upper Demerara-Berbice Distr., Mabura Hill, 180 km SSE of Georgetown, in evergreen forest. 5°21' N, 58°40' W, 0-50 m. Leg. B. Bleij & J.C. Biesmeijer, 11-12.1988, det. A. Aptroot 1990.





*Astrothelium tenue*