

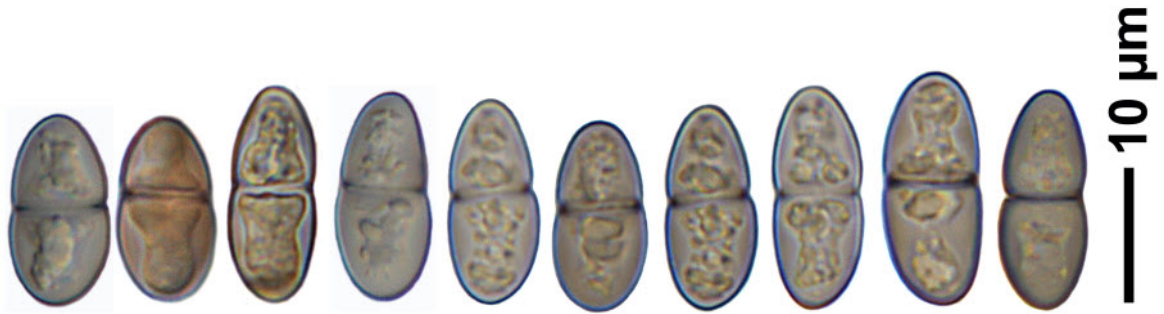
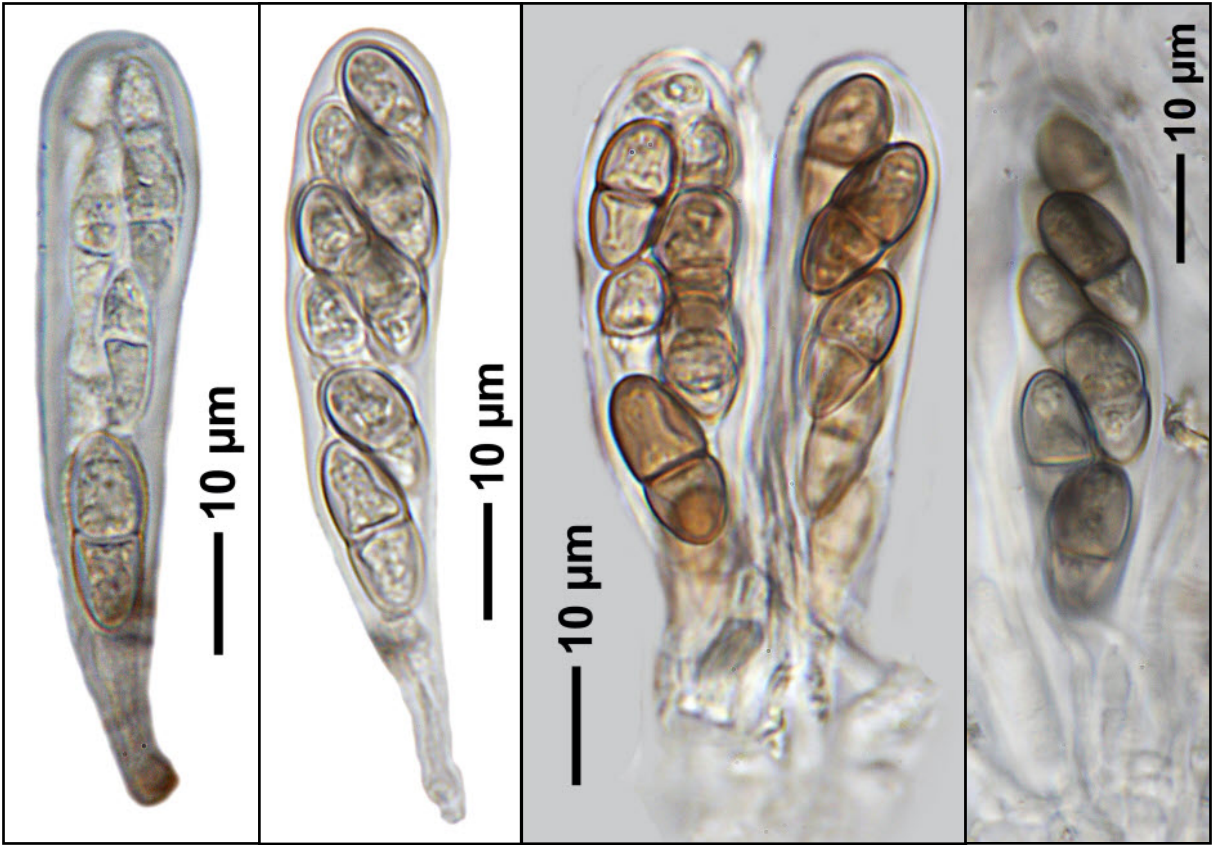
Distothelia isthmospora Aptroot

Hamathecium IKI-, Filamente oberhalb der Asci anastomosierend.
Sporen 8/Ascus 15-19 x 6-8 μm , rötlich braun bis grau, 1-septiert, am Septum etwas eingeschnürt.

Lit.: Seaward & Aptroot (2005): Hong Kong Lichens Collected on the United States North Pacific Exploring Expedition, 1853-1856. – *The Bryologist* 108: 282–286.

[FH], China, Hong Kong Island: Hillside, on bark of *Rhus* and other bushes. C. Wright, 21 April 1854. HOLOTYPUS





Distothezia isthmospora