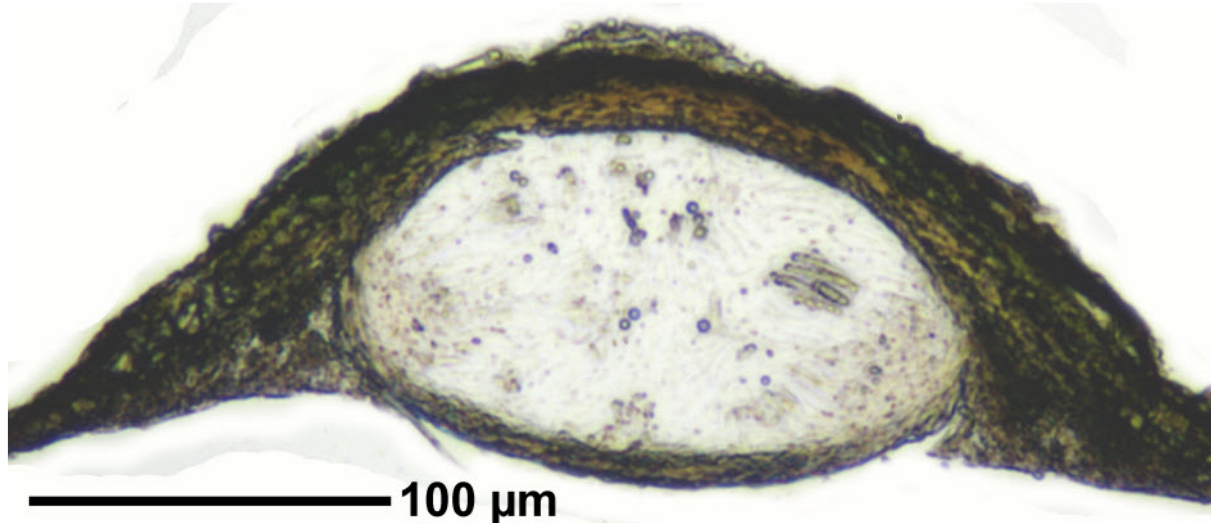
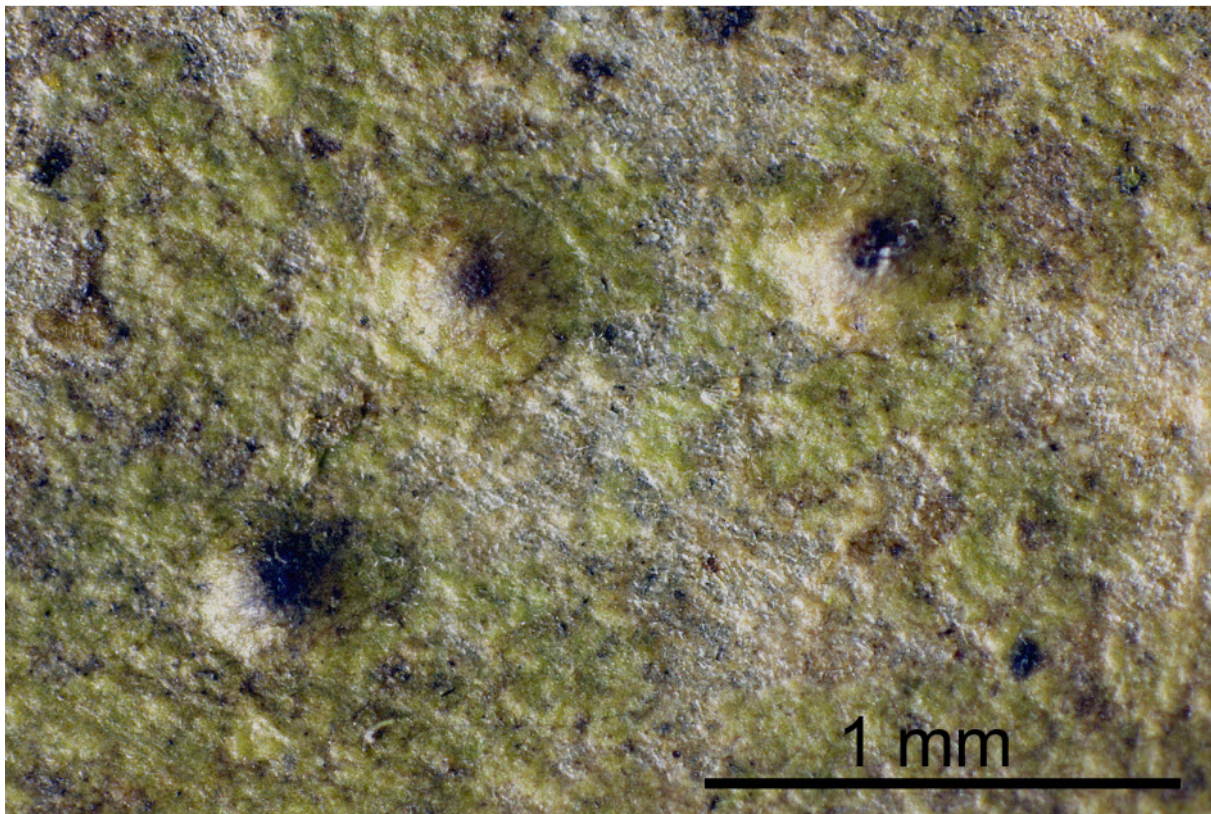


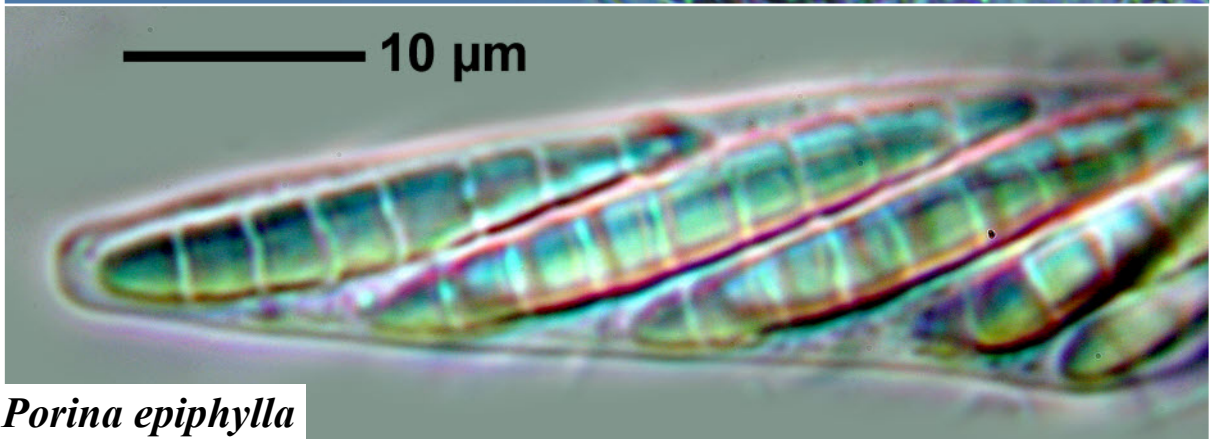
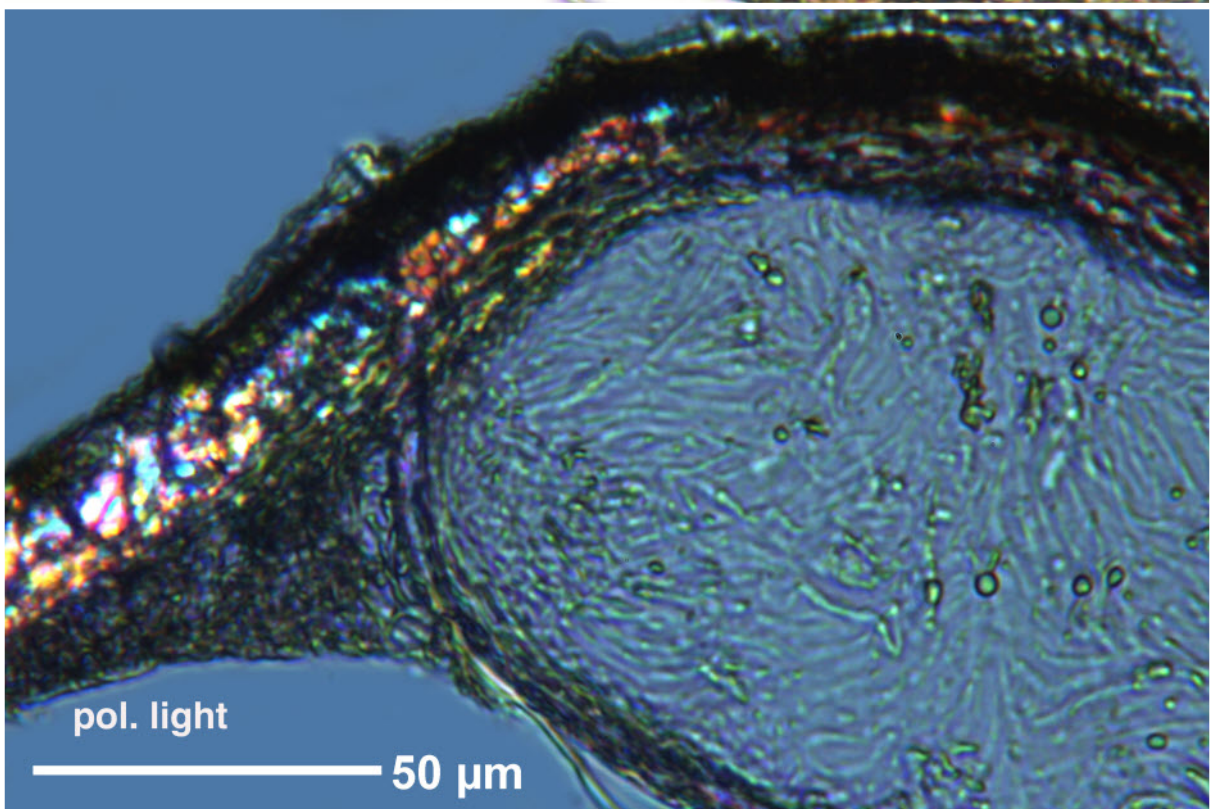
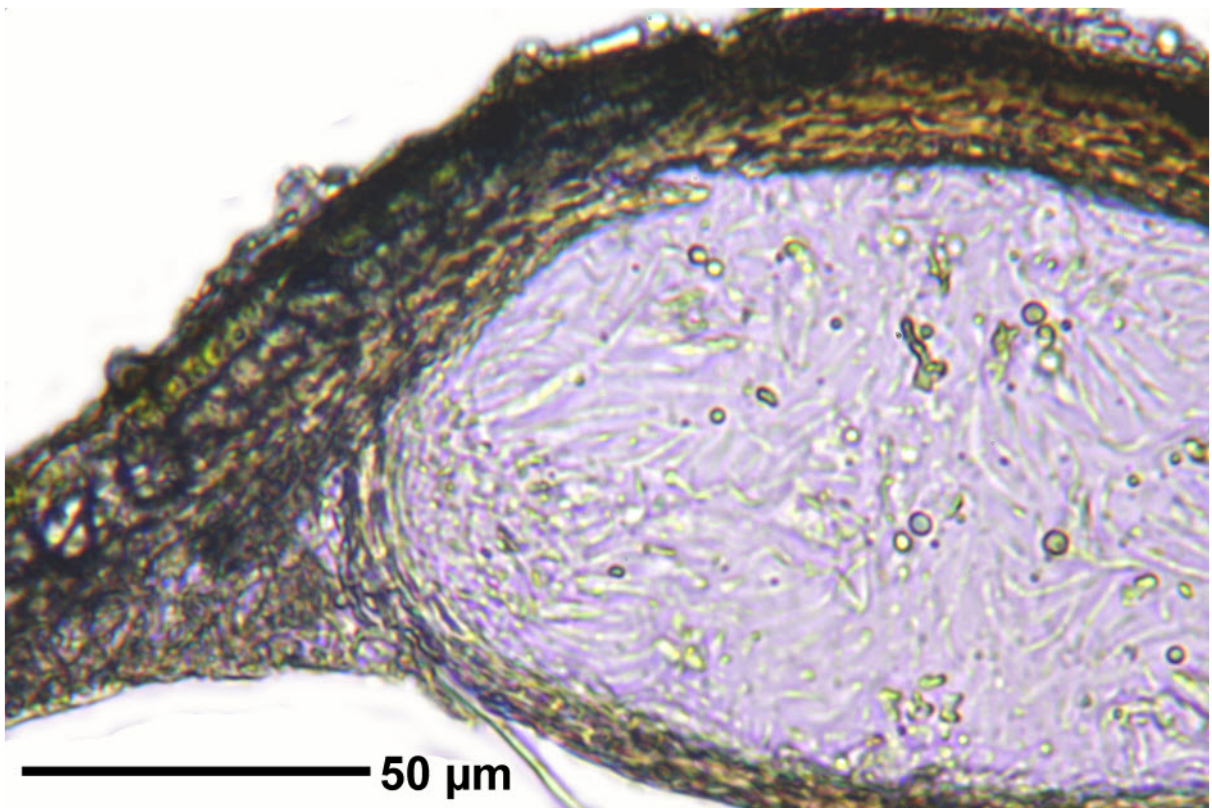
*Porina epiphylla* Fée

Spores hyalin, 7-septiert, 25 x 3.5 µm. Hymenium J-. Pantropisch.

[14700], Seychelles, Mahe, Mahe Seychelloise National Park, Sentier de Casse Dent, Marc Aux Cochons Hiking Path, 4°39.234' S, 55°26.355' E, 410 m. Leg. Schumm & Frahm 10.10.2008, det. Aptroot 2008.







*Porina epiphylla*