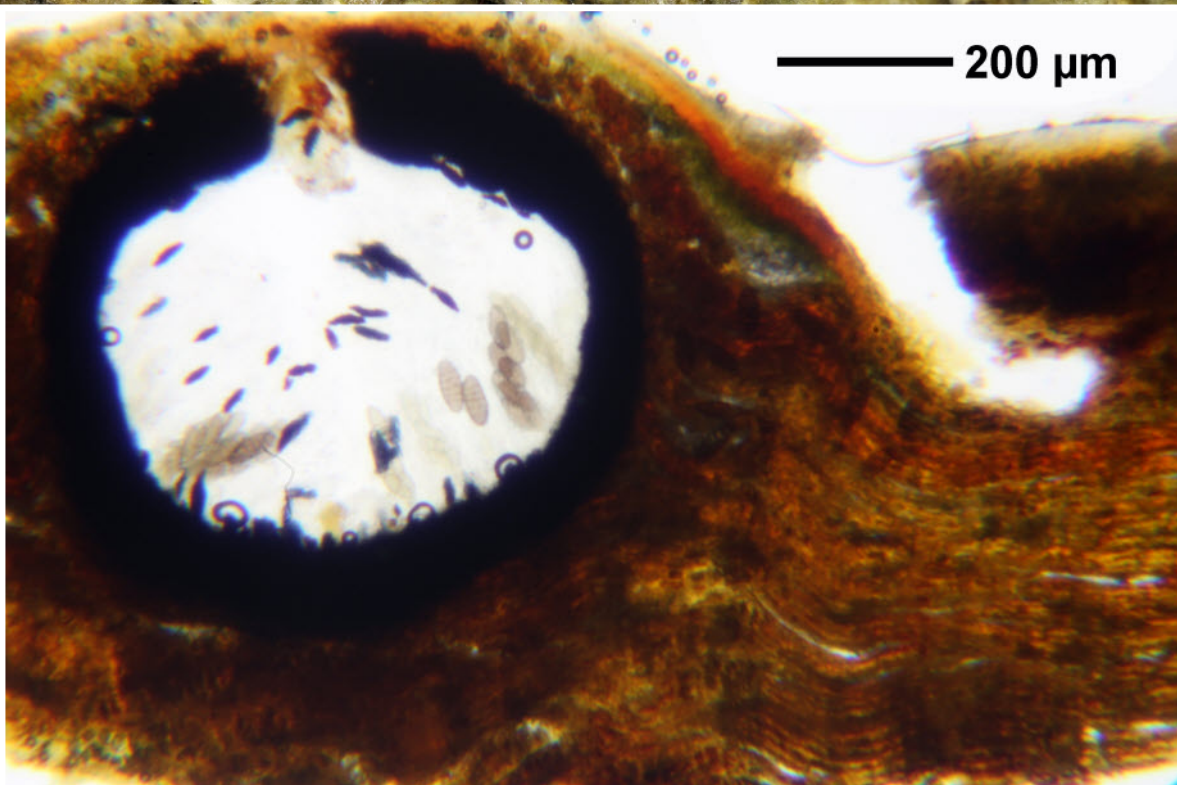
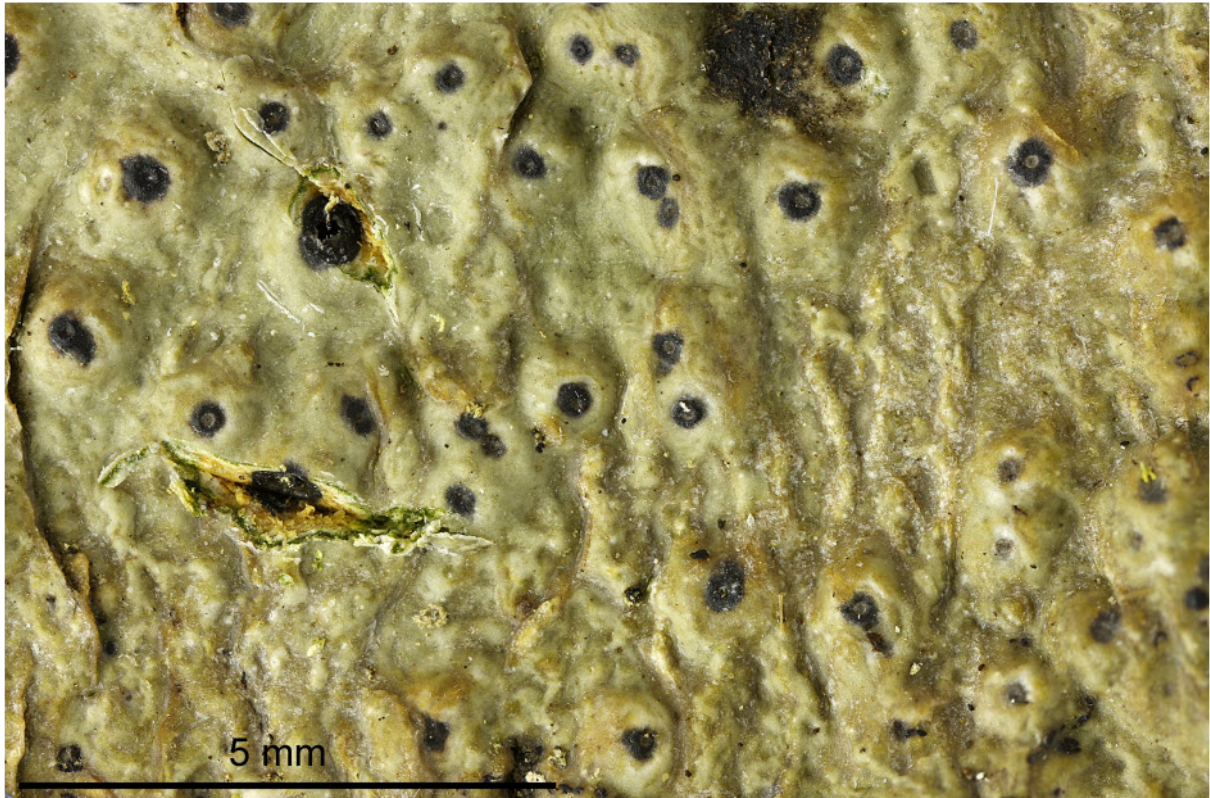
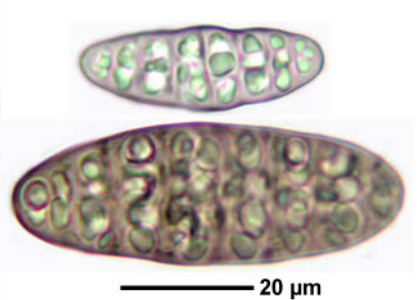
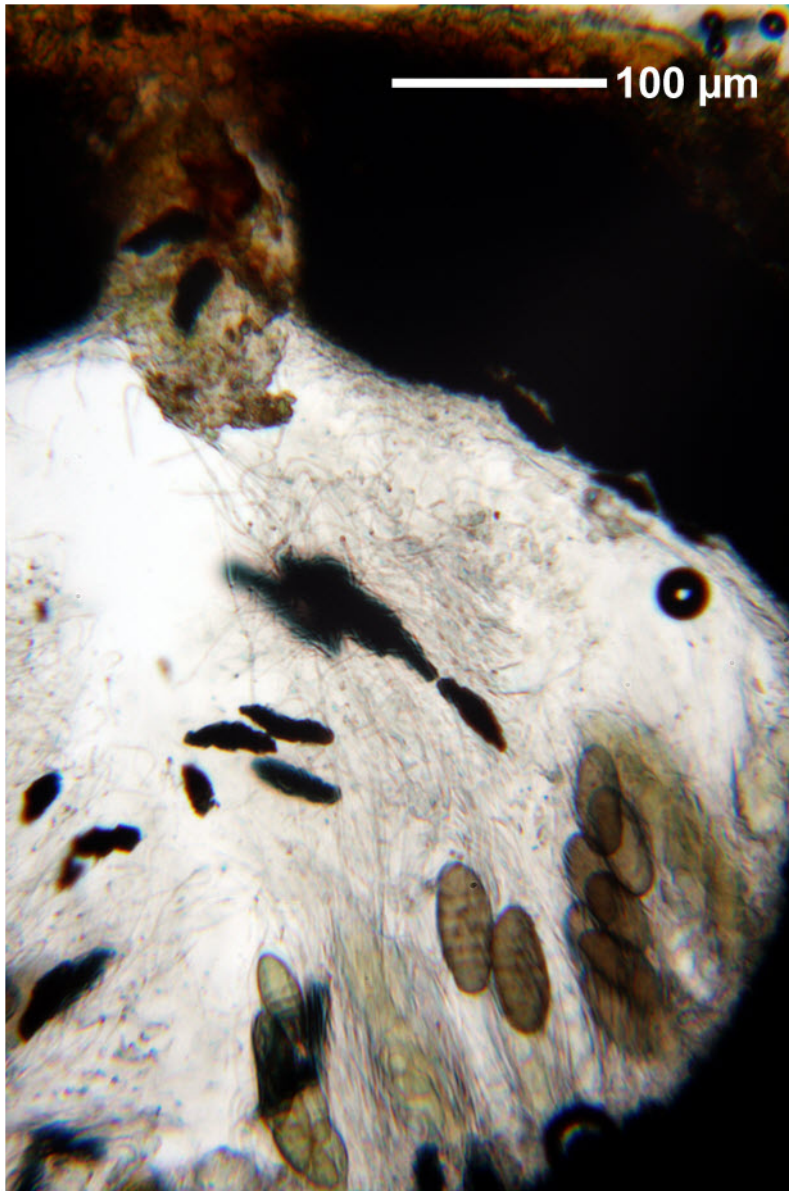


*Pyrenula leucostoma* Ach.

Spores brown, muriform, 6-8/ascus, 40-60 x 17-22  $\mu\text{m}$ , without reddish oil. Thallus corticate, usually with pseudocyphellae, UV- (often seeming pale greenish).

[14354], Seychellen, Praslin, Anse La Blague, beim Hotel La Vanilla, 4°19.793' S, 55°47.019' E, 17 m. Leg. Schumm 27.09.2008, det. Aptroot 2008.





*Pyrenula leucostoma*