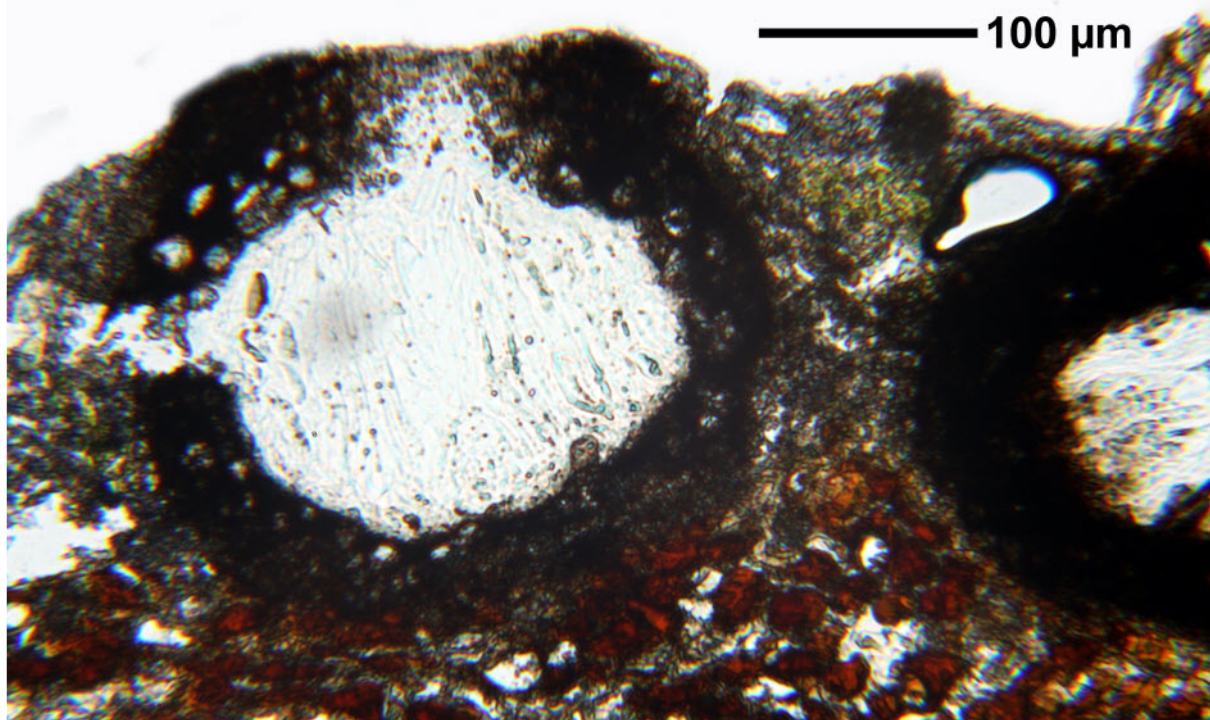
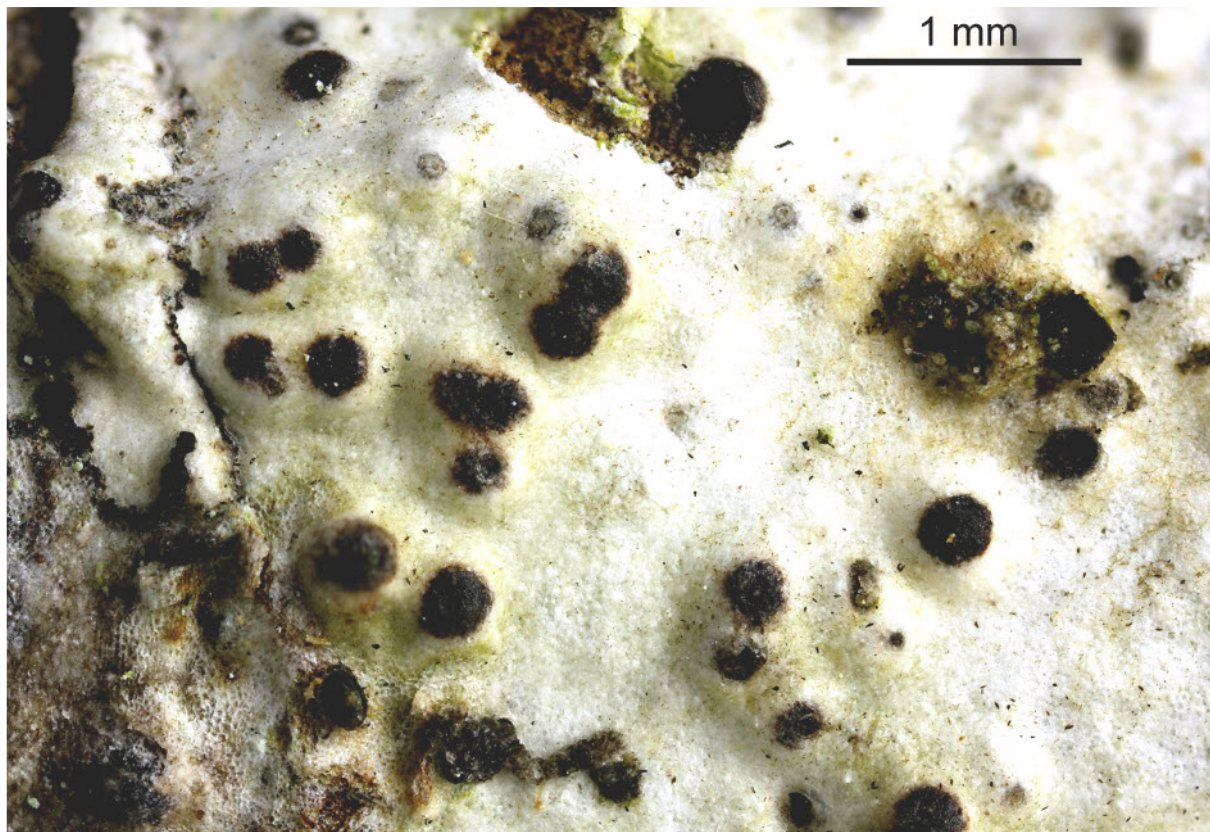
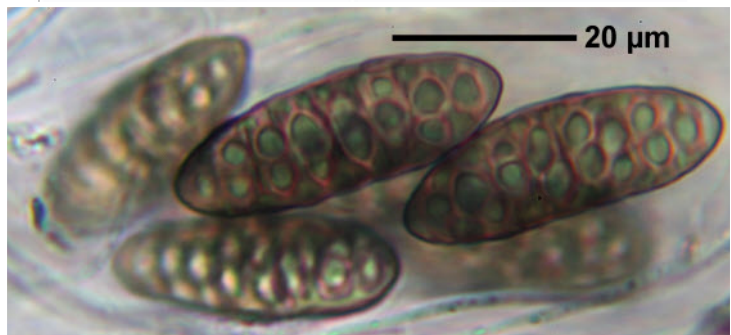
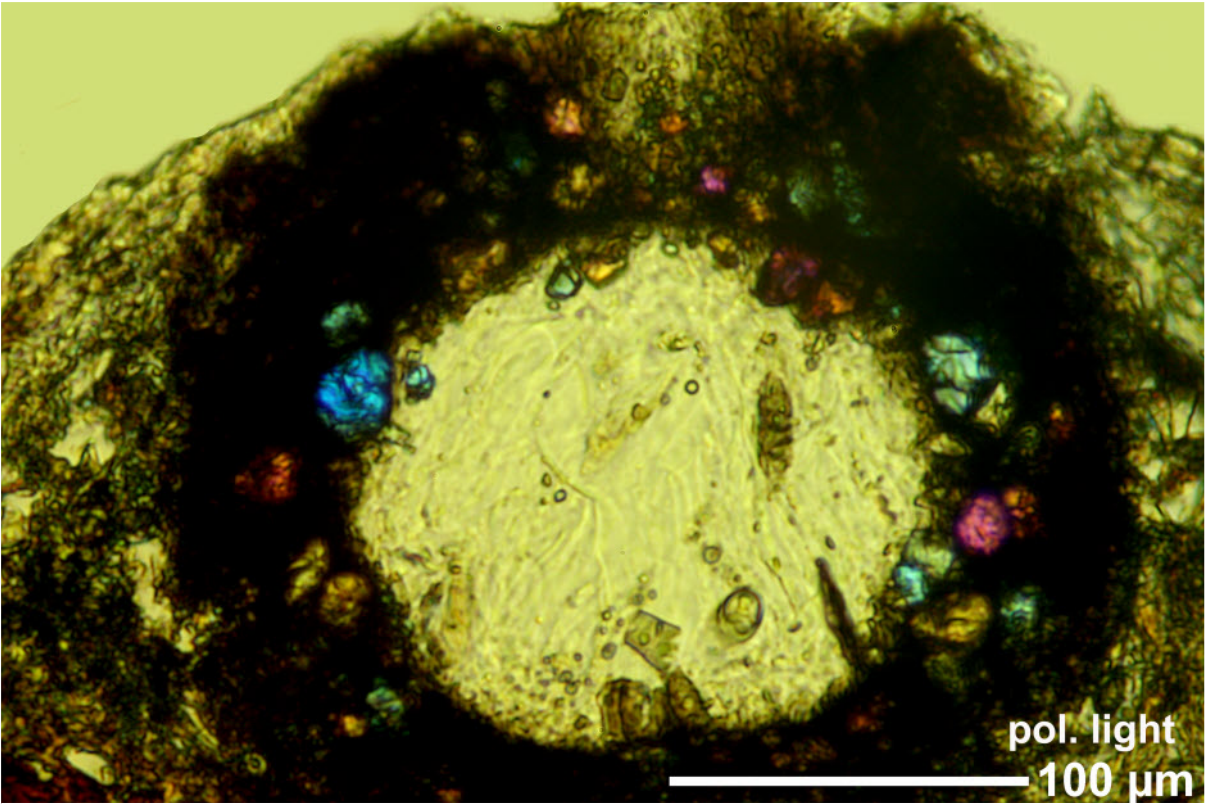


Pyrenula macularis (Zahlbr.) R.C.Harris

Spores grey-brown, old orange, muriform, 35-38 x 12-15 μm .

[14678], Seychellen, Mahe, W-Küste, Barbarons Estate, 4°43.214' S, 55°28.839' E, 17 m. Leg. Schumm 11.10.2008, det. Aptroot 2008





Pyrenula macularis