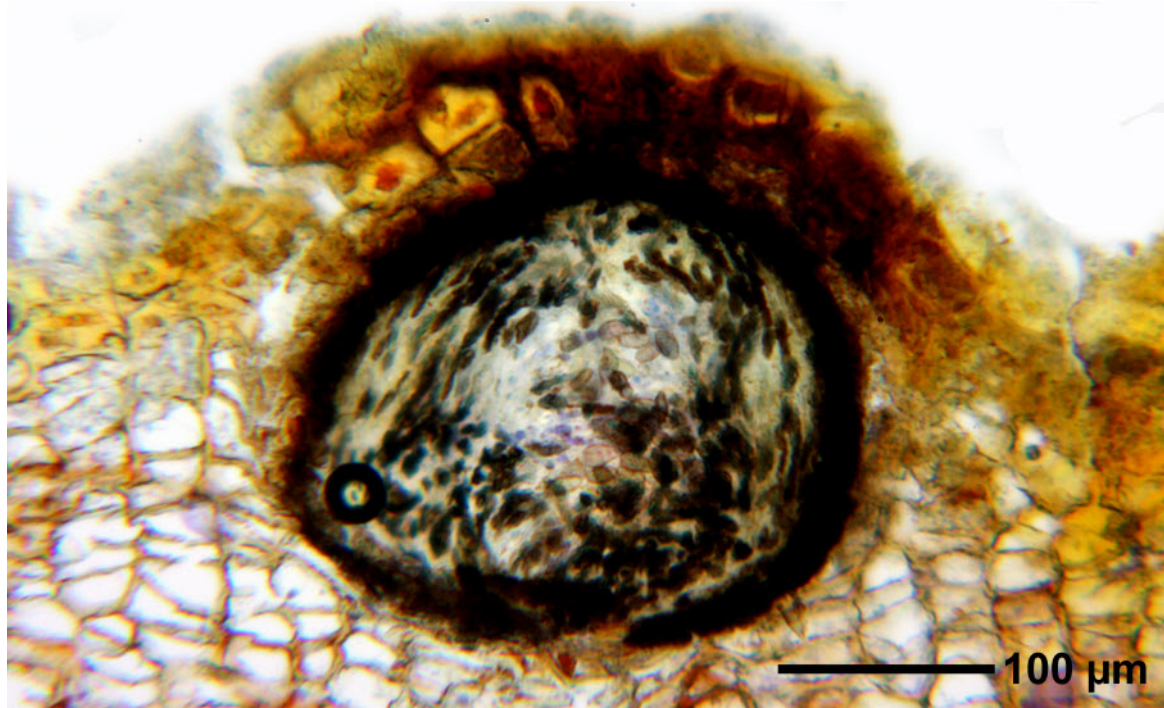
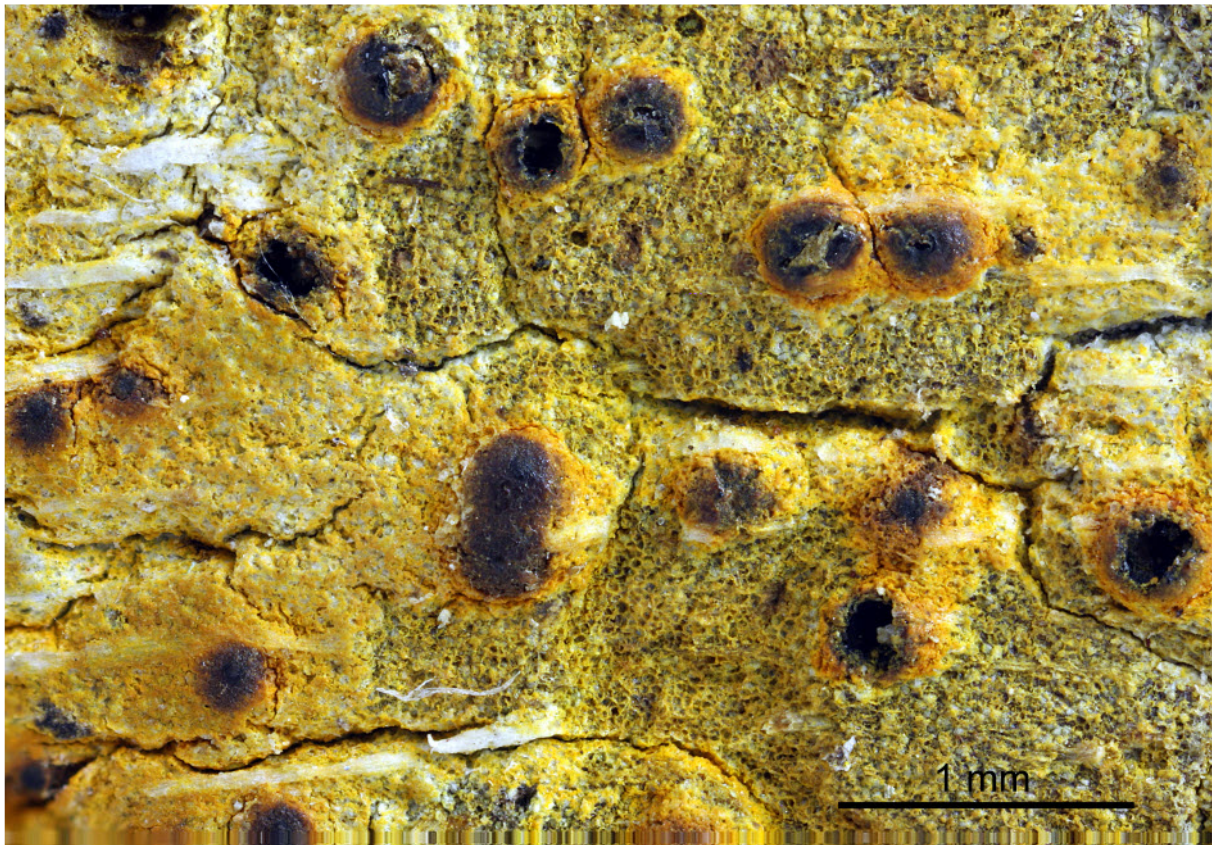
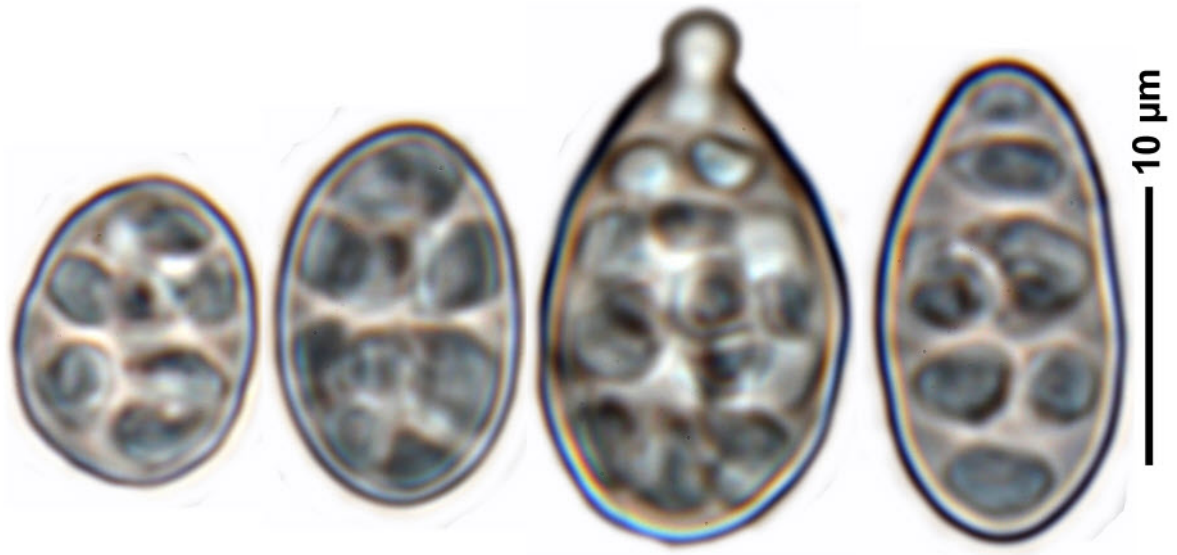


*Pyrenula ochraceoflava* (Nyl.) R.C.Harris

Spores grey-brown, submuriform, 3-transversal-septate, 1-3-longitudinal-septate, 8/ascus, 13-17 x 10-11  $\mu\text{m}$ , without redish oil. Thallus at least partly yellow to orange, K<sup>+</sup> red. Pantropical.

[14396], Seychelles, Praslin, Mündung des Cote Or River, östlich von Anse Volbert Village, 4°18.996' S, 55°44.780' E, 2 m; auf Cocos. Leg. et det. Schumm 29.09.2008, test. Aptroot 2008.





*Pyrenula ochraceoflava*