

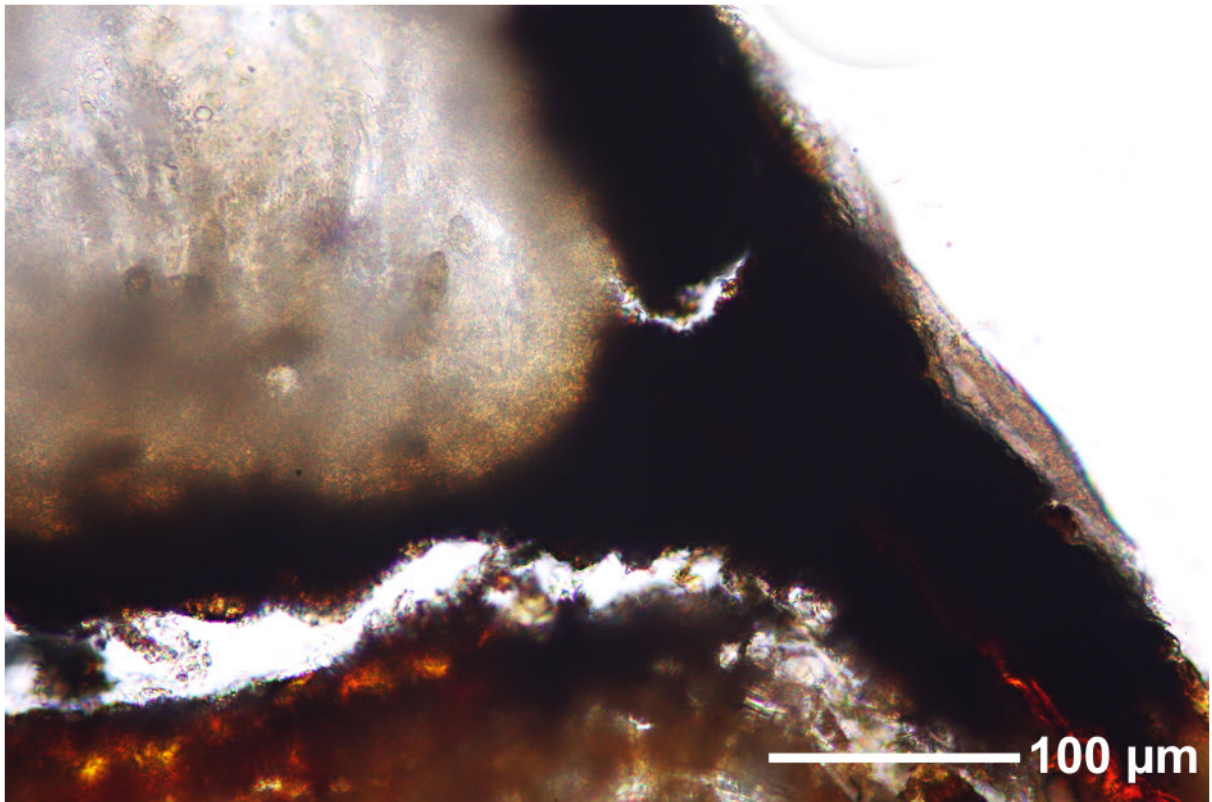
Pyrenula supracongruens Aptroot & Schumm

Thallus greenish brown, smooth, corticate, very thin, UV-negative. Ascomata conical, black, exposed, c. 0.5-1.2 mm diam. Excipulum carbonized throughout, c. 30 μm thick; involucrellum up to ca. 250 μm laterally extending beyond the ascomata. Hamathecium heavily interspersed. Ascospores 30-35 x 11-13 μm , 3-septate, brown, fusiform, pointed, lumina rounded, end lumina bulging out into the spore tips.

This a species with ascospores of the *pseudobufonia*-type (with the end lumina in the ascospore tips) differing from *Pyrenula subcongruens* by the larger spores and ascomata, and by the strictly conical shape of the ascomata (cf. Aptroot et al. 2008: 124).

[14636], Seychelles, Mahe, Morne Blanc (rechts der Straße von Victoria nach Port Glaud), 4°39.593' S, 55°26.248' E, 480 m, auf *Cinnamomum verum*. Leg. Schumm & Frahm 09.10.2008, det. Aptroot 2008.





Pyrenula supracongruens