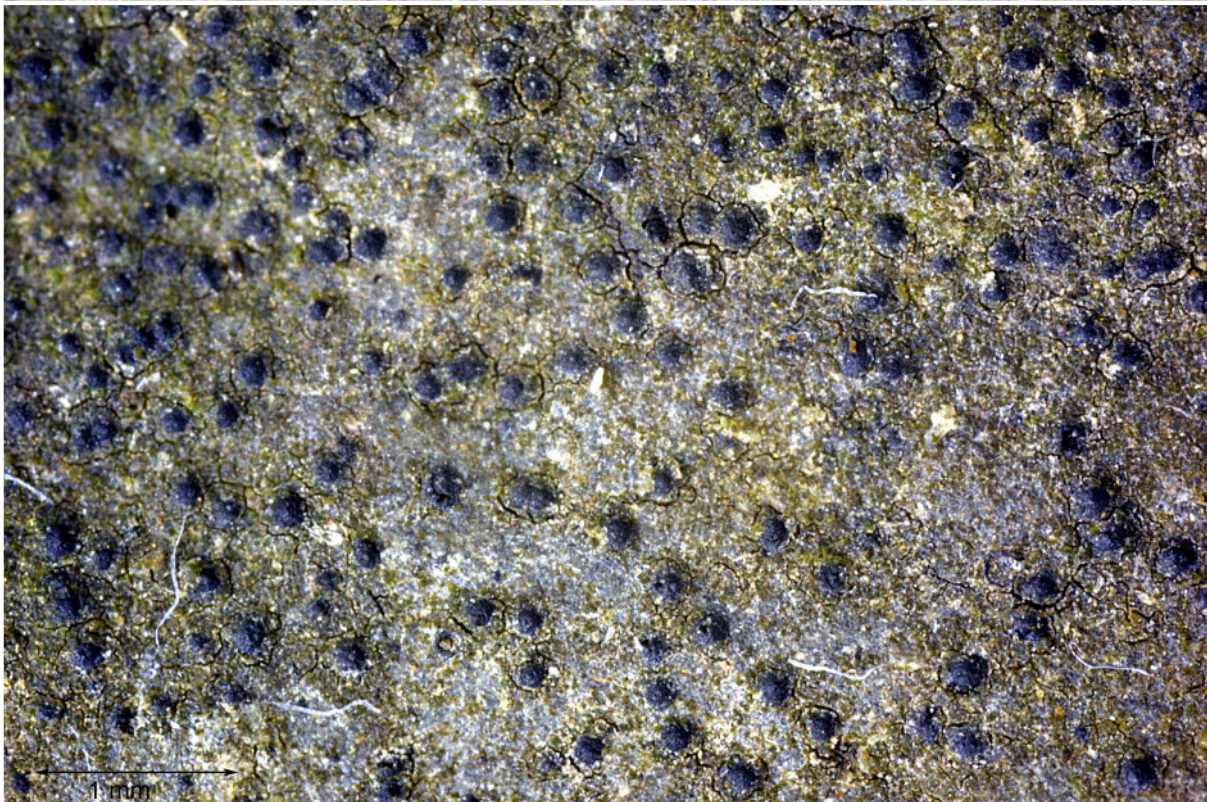
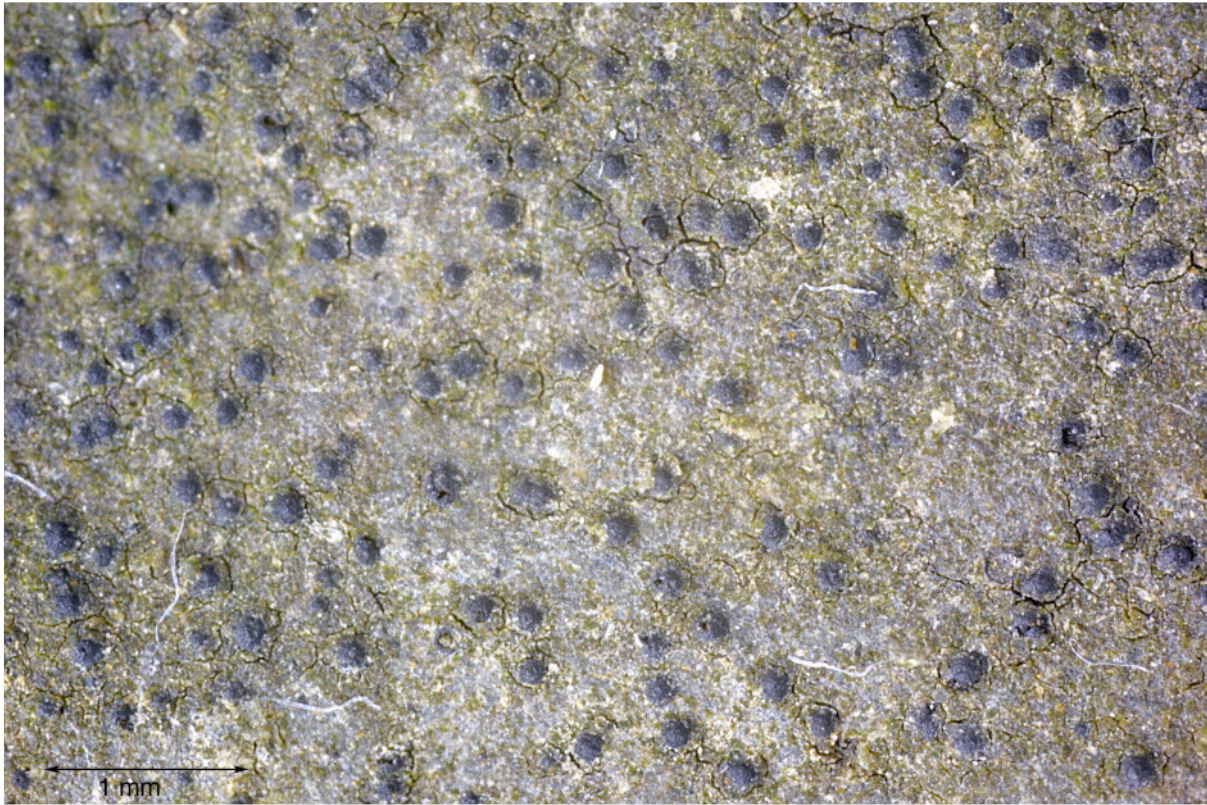
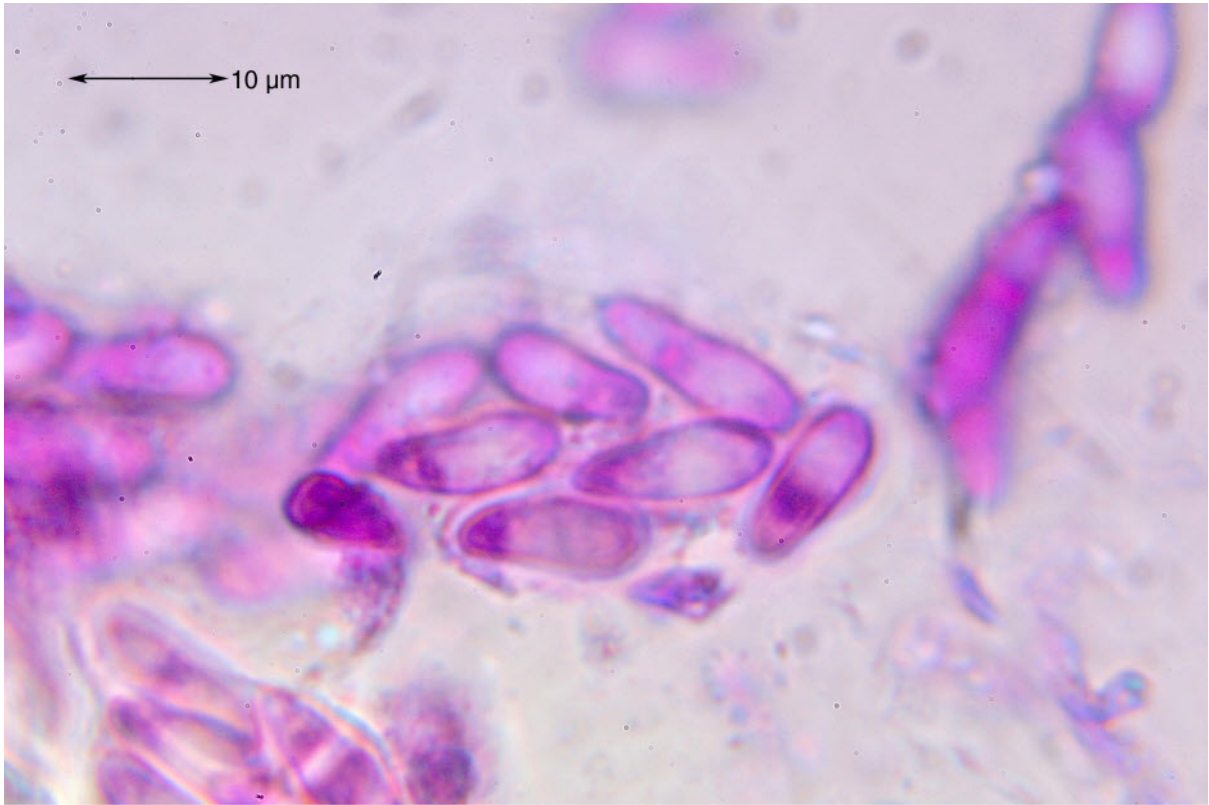


*Verrucaria dolosa* Hepp

Perithechien. 0,2-0,3 mm, halbeingesenkt, unten offen; Sporen 1-zellig, zu 8, 13-14 x 5,5 µm; Nucleus J+ rot

[12323], Rheinland Pfalz, Kreis Ahrweiler, Dreisbachtal bei Fuchshofen, Unterdevon, Bleiabbaugebiet. Leg. Schumm & Düll 22.06.2006, det. Schumm 2006.





*Verrucaria dolosa*