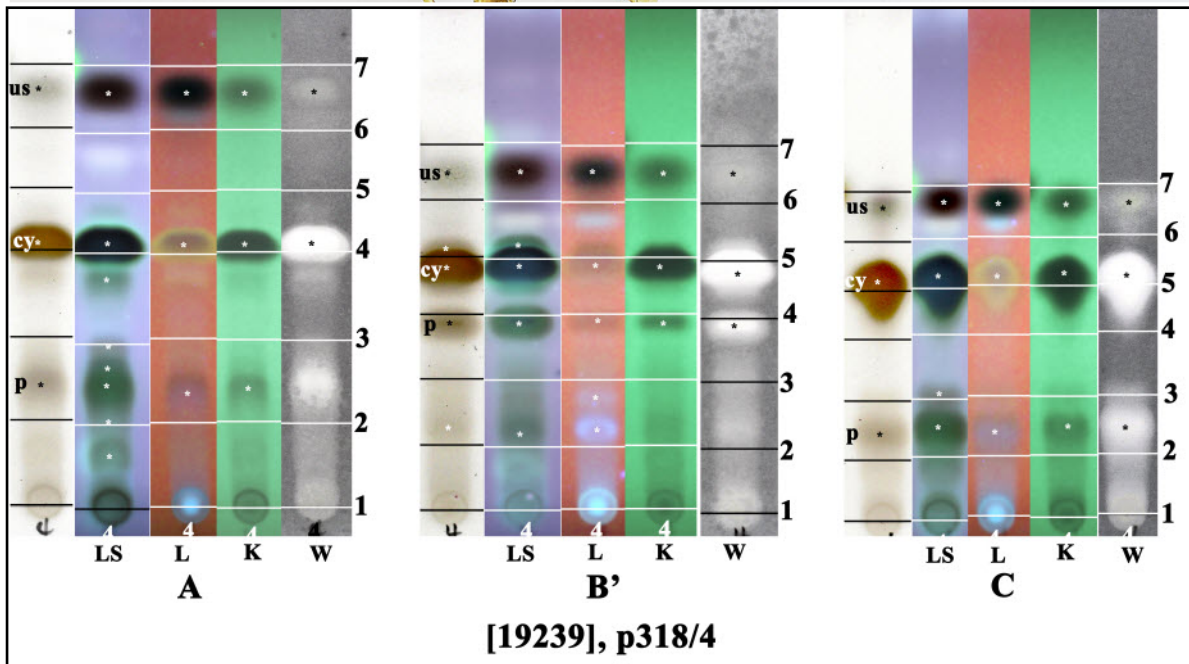


*Ramalina confirmata* (Nyl.) Elix

[= *Ramalina subfraxinea* var. *confirmata* (Nyl.) G.N. Stevens]

[19239], Australia, Queensland, Tin Can Inlet, Tin Can Bay, 25°54' S, 153°01' E, sea level, growing on *Rhizophora stylosa* in strand vegetation along foreshore. Leg. J.A. Elix (22836), 2.07.1989. Chemistry: usnic acid (minor), cryptochlorophaeic acid (major), paludosic acid (trace) by TLC, anal. J.A. Elix. LICHENES AUSTRALASICI EXSICCATI NO. 219.





us: usnic acid, cy: cryptochlorophaeic acid, p: paludosic acid

*Ramalina confirmata*