

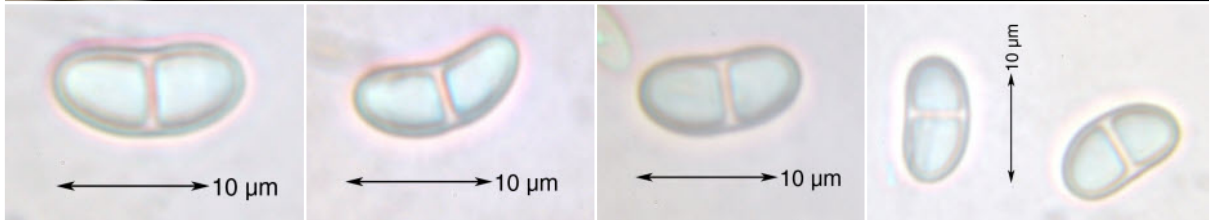
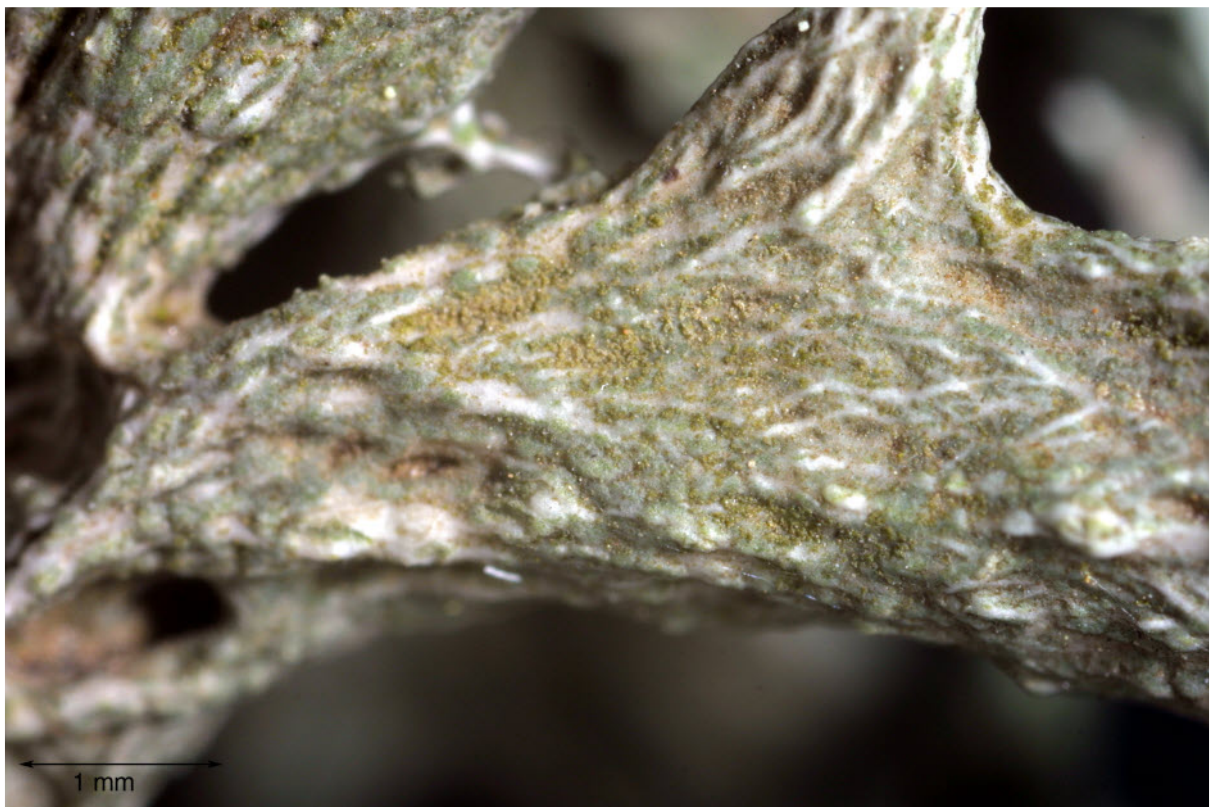
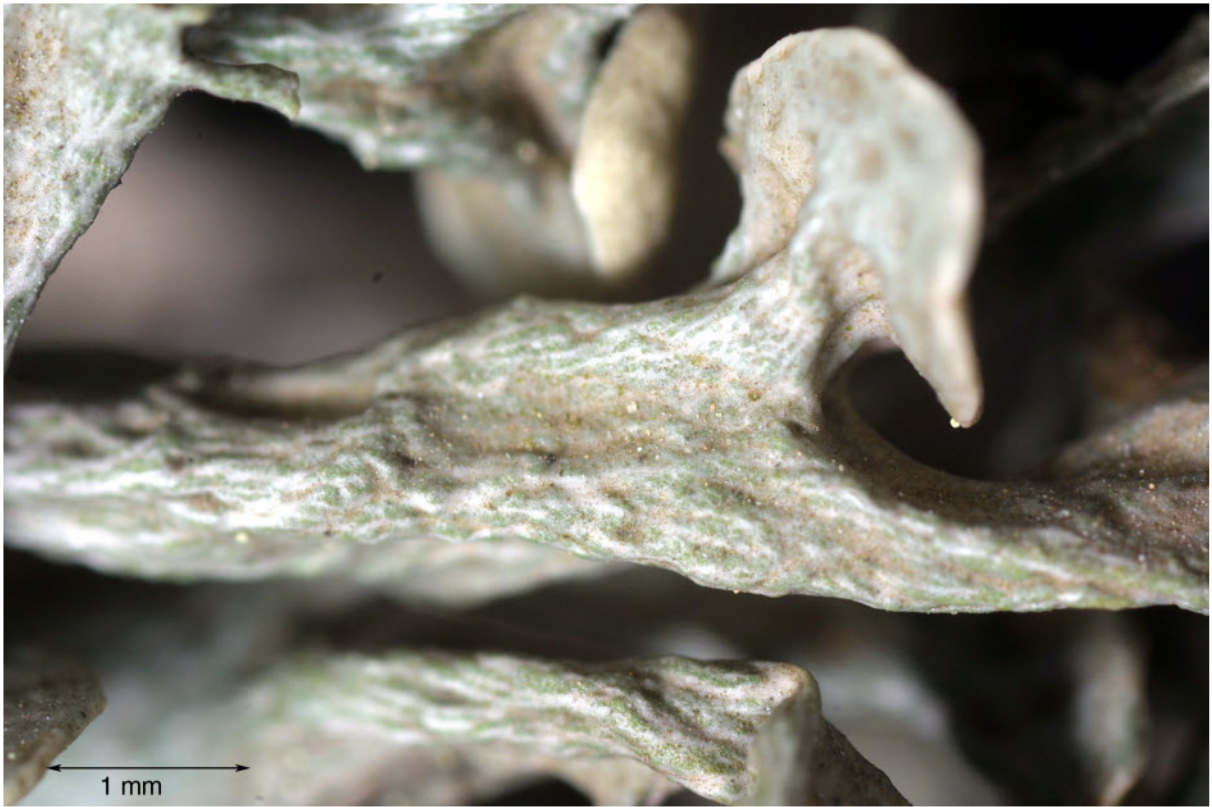
Ramalina panizzei De Not.

Sporen gerade bis schwach gekrümmt, $13 \times 6,5-7,5 \mu\text{m}$; Pseudocyphellen stark entwickelt.

Chemistry (p180/7): evernic acid, K-, P-.

[12496], Griechenland, W-Samos, beim Mt. Kerketeas, $37^{\circ}44.279'\text{N}$, $26^{\circ}40.224'\text{E}$, 617 m. Leg. F. Schumm, R. Düll & Wunder, 13.05.2006, det. A. Aptroot, 2007, Dupl. an Aptroot.





Ramalina panizzei