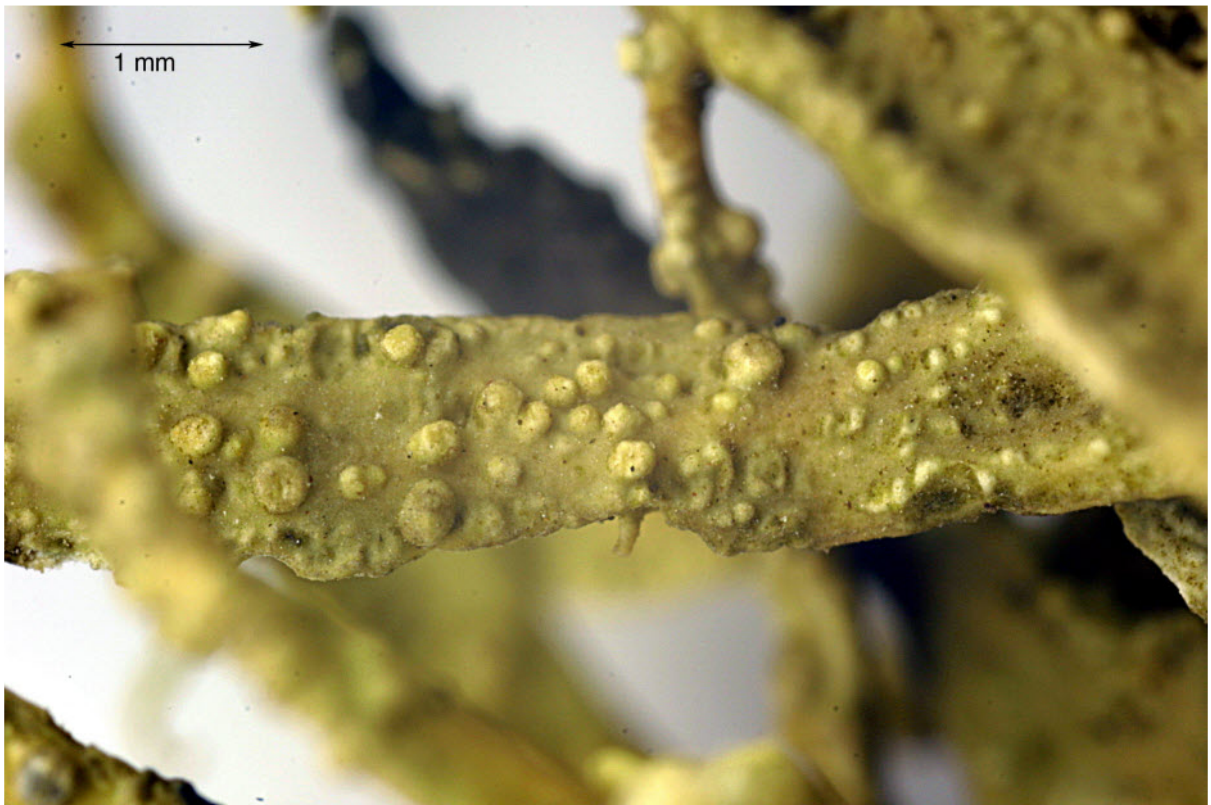


Ramalina wirthii Aptroot & Schumm

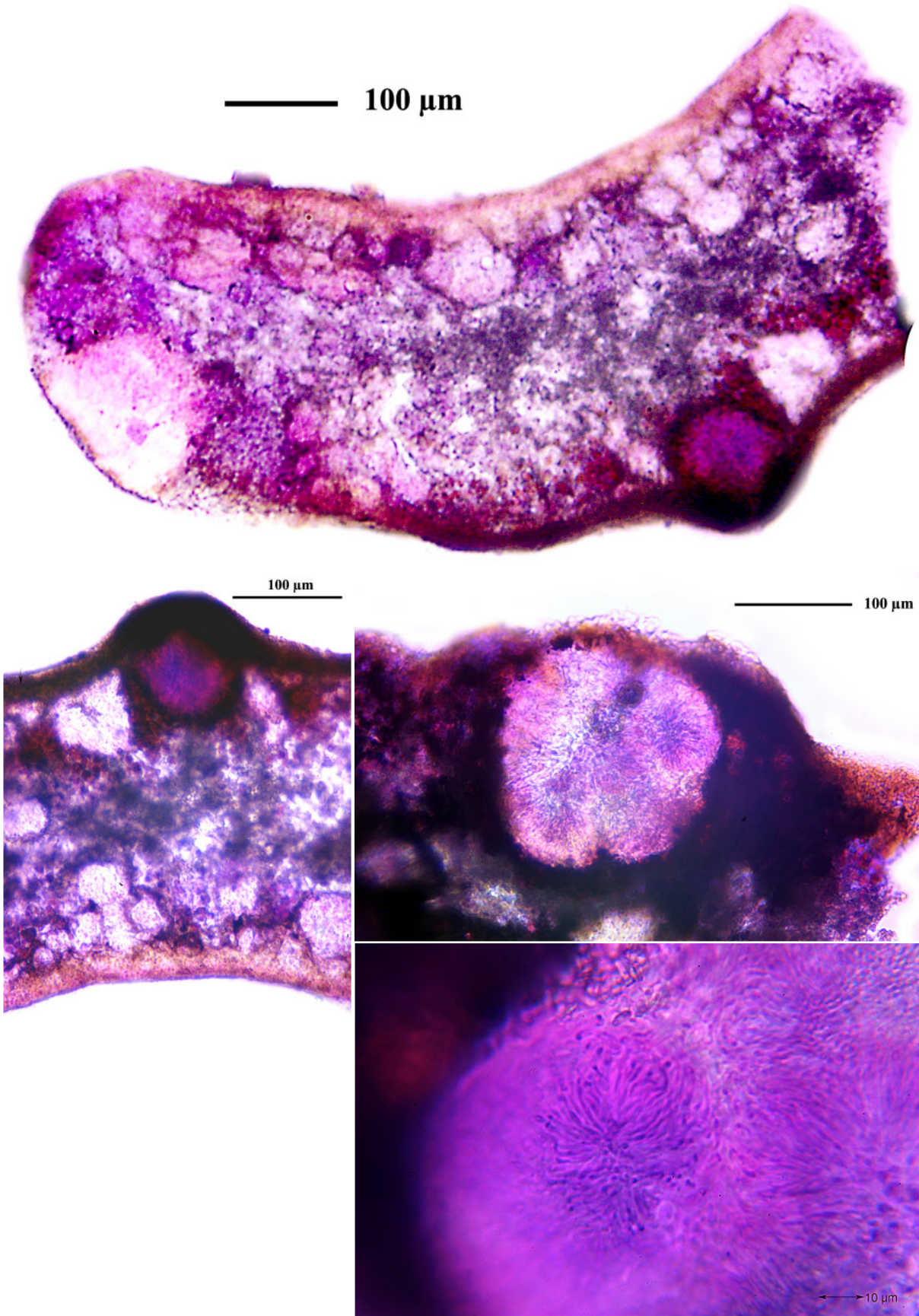
p195/8: salazinic (maj), protocetraric (tr). p175/2: salazinic (maj), protocetraric a. (trace); Fertile, Pseudocyphellen, helle Pykniden in warzigen Erhebungen; Dubl. an Aptroot

[11118], Portugal, Azoren, Sao Miguel, Westküste, Ponta da Ferraira, an porösen, schwarzen Lavablöcken in Meeresnähe, 37°51.624' N, 25°51.144' W, 0 m. Leg. F. Schumm, 04.06.2003 (10), conf. A. Aptroot 2007.





Ramalina wirthii



Ramalina wirthii