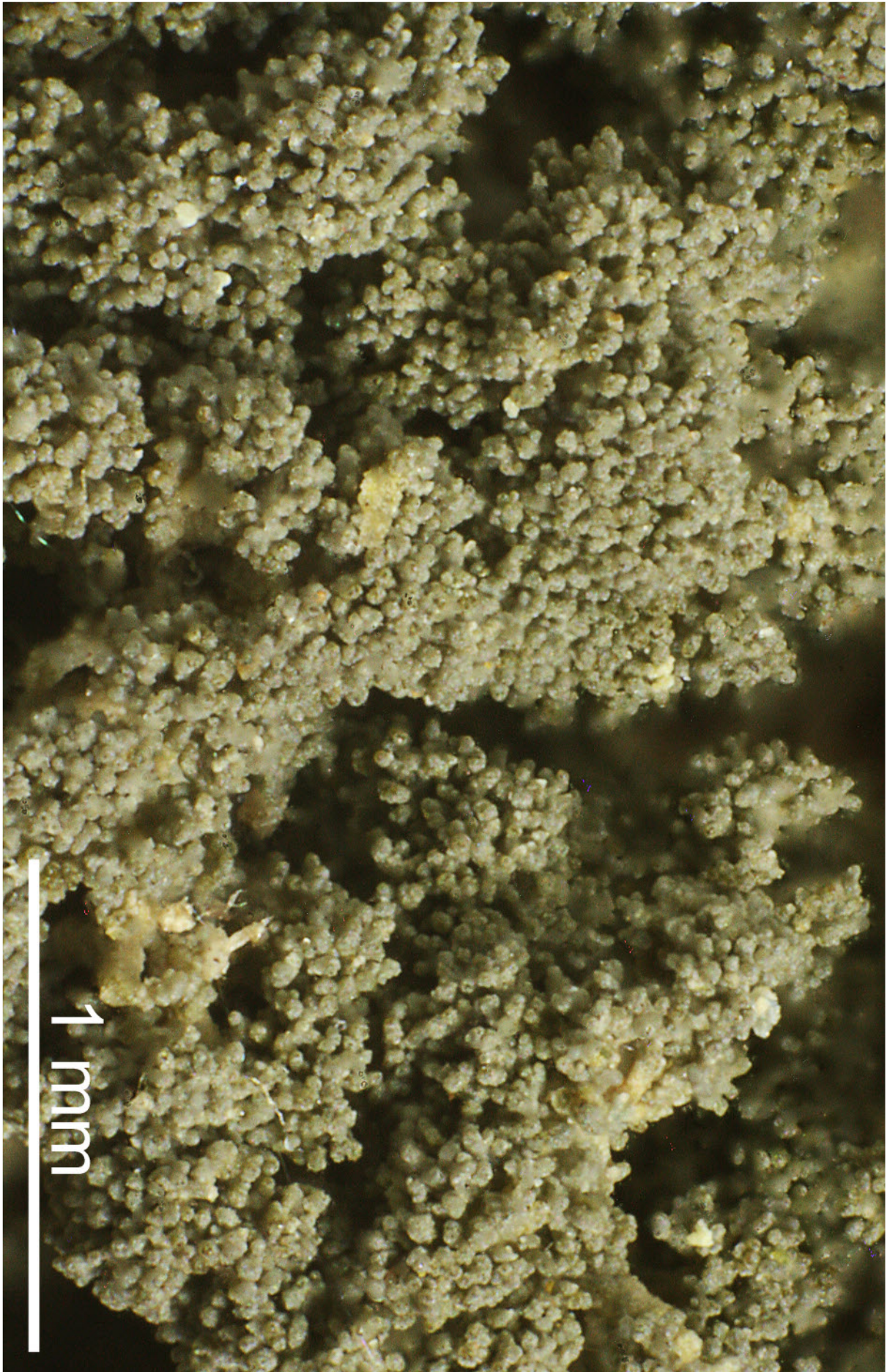


Leptogium coralloideum (Meyen & Flot.) Vain.

Thallus 150-500 μm thick, leaden grey or blackened, surfaces wrinkled (at 10 x magnification) Isidia cylindrical, becoming coralloid, to 70 μm thick. Apothecia rare, submarginal, pedicellate. Ascospores muriform, 30-40 x 10-17 μm , apices acute to acuminate. Similar to *Leptogium faciifictum*, which has isidia 80-150 μm thick.

[19061], Australia, New South Wales, Marble Arch, Deua National Park, 18 km south-south-west of Majors Creek, 35°44' S, 149°42' E, 650 m, growing on branches of *Bursaria spinosa* in deep, limestone-dominated creek surrounded by dry sclerophyll forest. Leg. H. Streimann (38810A), 20.09.1987, det. D. Verdon. LICHENES AUSTRALASICI EXSICCATI No. 158.





Leptogium coralloideum