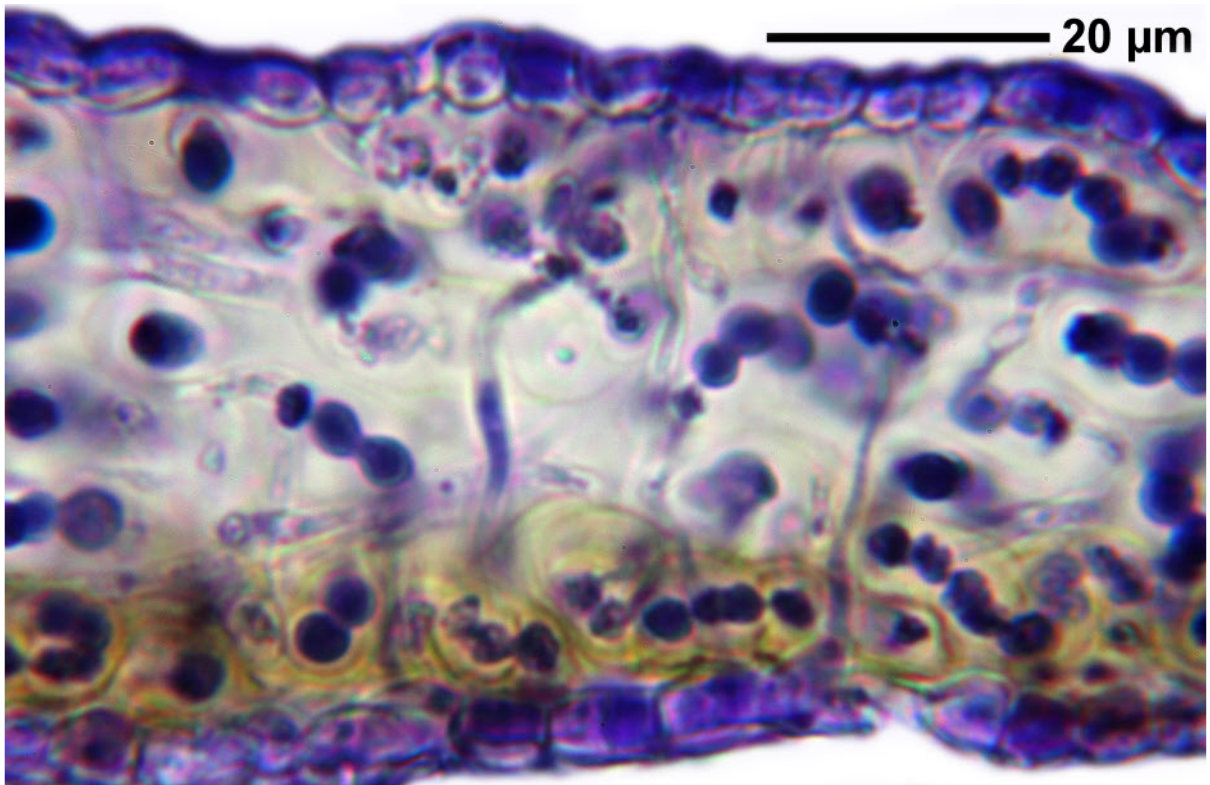


Leptogium denticulatum Nyl.

Thallus lead grey, lobes spreading to erect, with squamuliform isidia on the upper surface and margins. Surface of the thallus roughened but not wrinkled. Apothecia rare, proper exciple euparaplectenchymatisch, 25-70 μm . Spores 20-25 x 7-9 μm , 3-5-septate transversely, 1-septate longitudinally. Pantropical.

[14565], Seychellen, Mahe, Missions Lodge an der Straße von Victoria nach Port Gland, 4°39.305' S, 55°26.657' E, ca. 450 m. Leg. F. Schumm & J.-P. Frahm 07.10.2008, det. A. Aptroot 2008 .





Leptogium denticulatum