

***Heterodermia boryi*** (Fée) K.P.Singh & S.R.Singh  
[= *Leucodermia boryi* (Fée) Kalb]

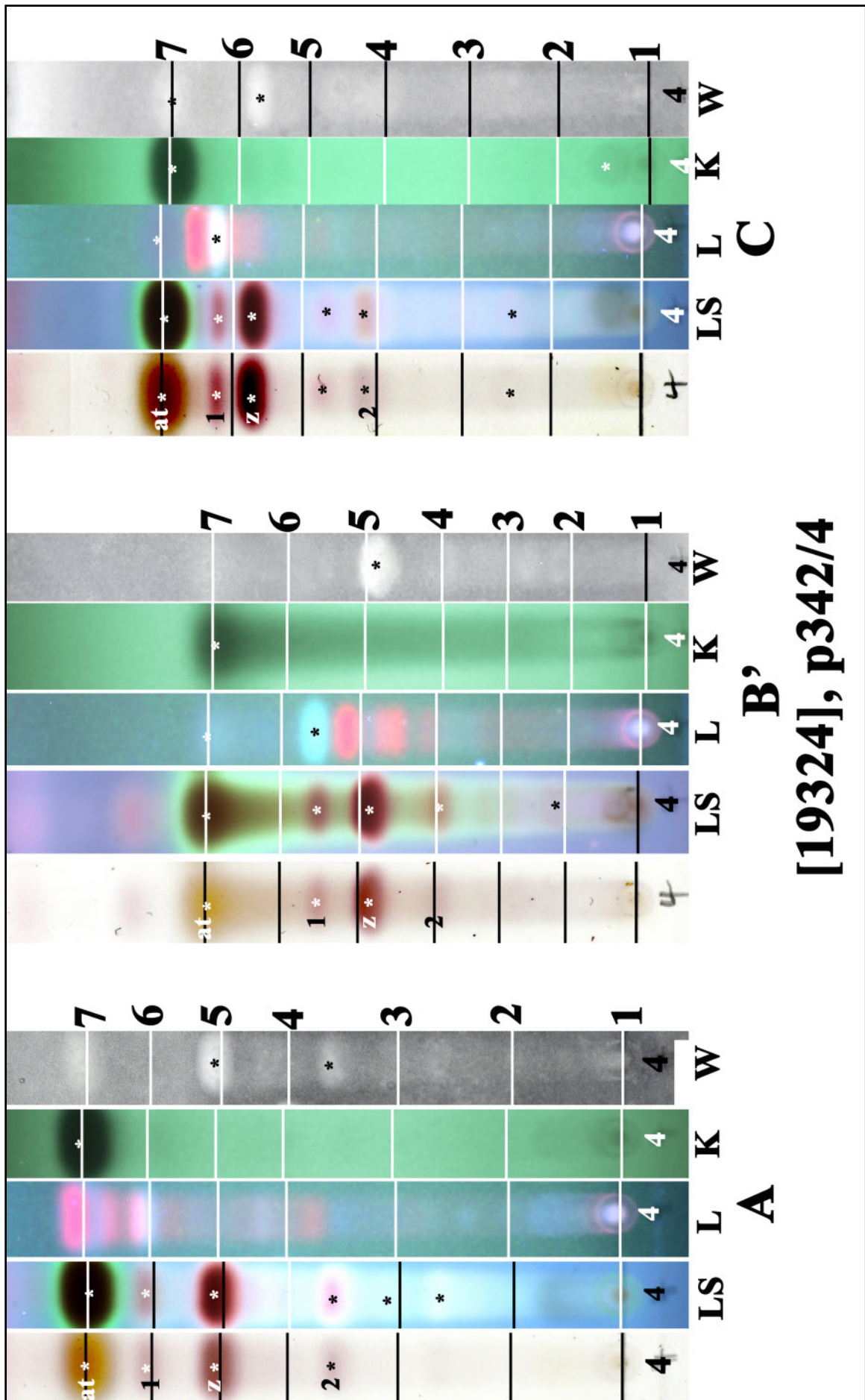
Thallus ribbon-like, dichotomously branched. Marginal rhizines, black, 5-15 mm long. Lower surface ecorticate. arachnoid to powdery-granulose but not soresidiate.

[19324], Vietnam, Central Highland, Lam Dong province Didou, Nuiba National Park near Giang Ly forest station, evergreen forest, along small stream, canopy cover 70-80%, 12°10'53.85" N, 108°40'38.08" E, 1500 m. Leg. My Nhan Le & Thien Tam Luong (141005), 12.12.2014. Det. F. Schumm. **Chemistry:** [atranorin](#), [zeorin](#), [6 \$\alpha\$ -acetoxyhopane-16 \$\beta\$ ,22-diol](#) by HPTLC, anal. F. Schumm. Dubl. ex Herbarium of University of Science, HCMC (PHH).





*Heterodermia boryi*



*Heterodermia boryi*