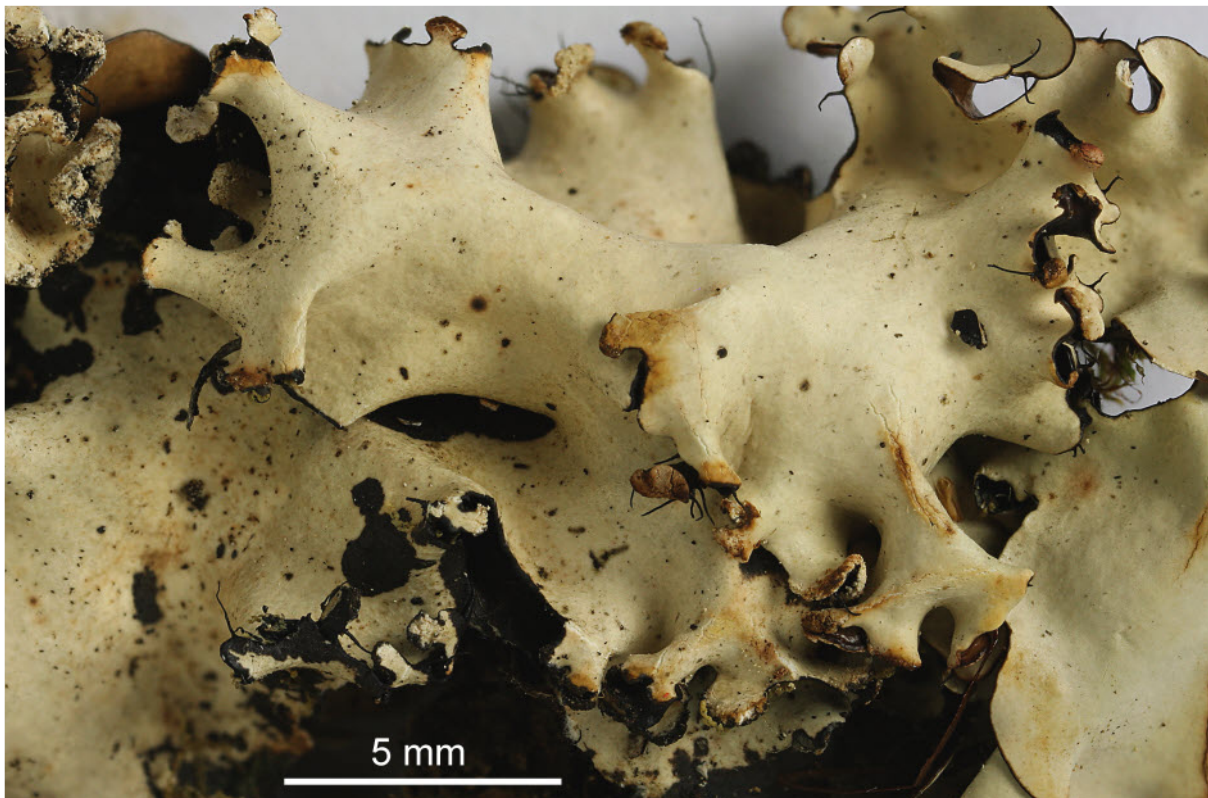
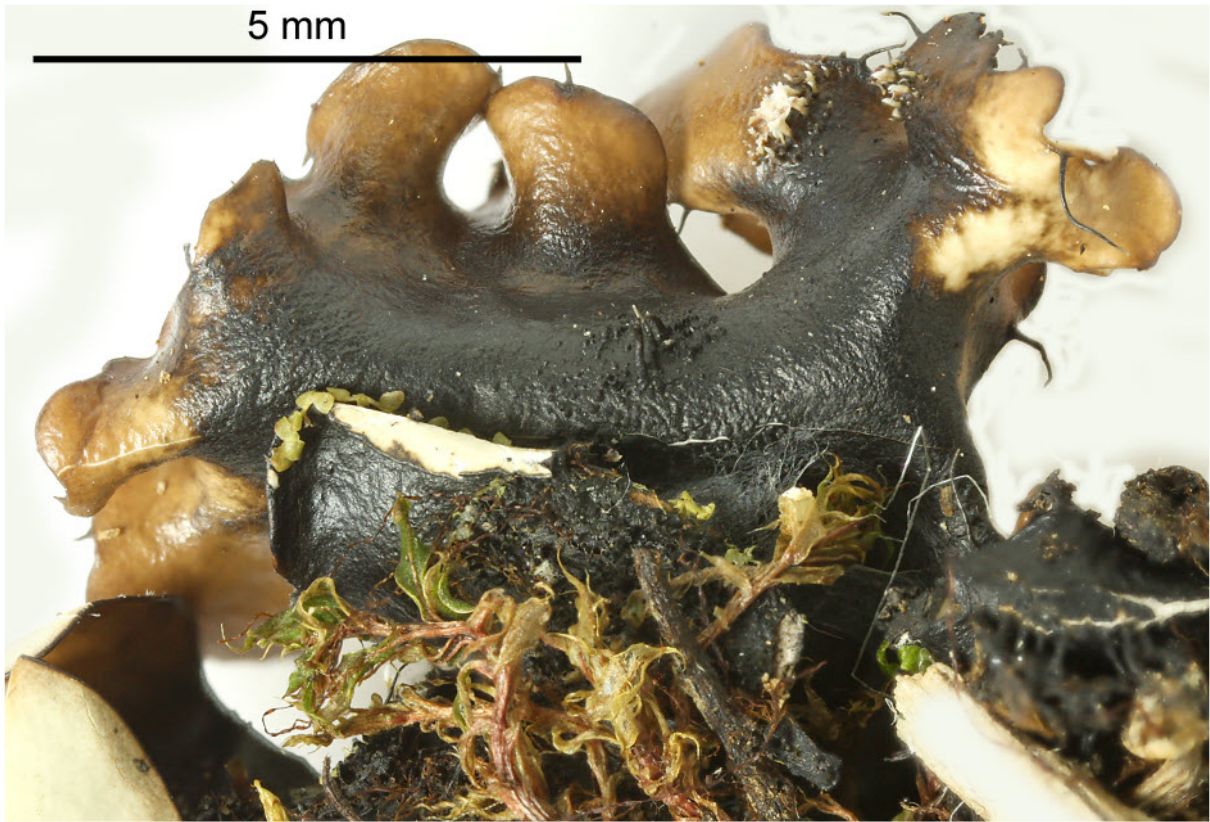


Parmotrema cristiferum (Taylor) Hale

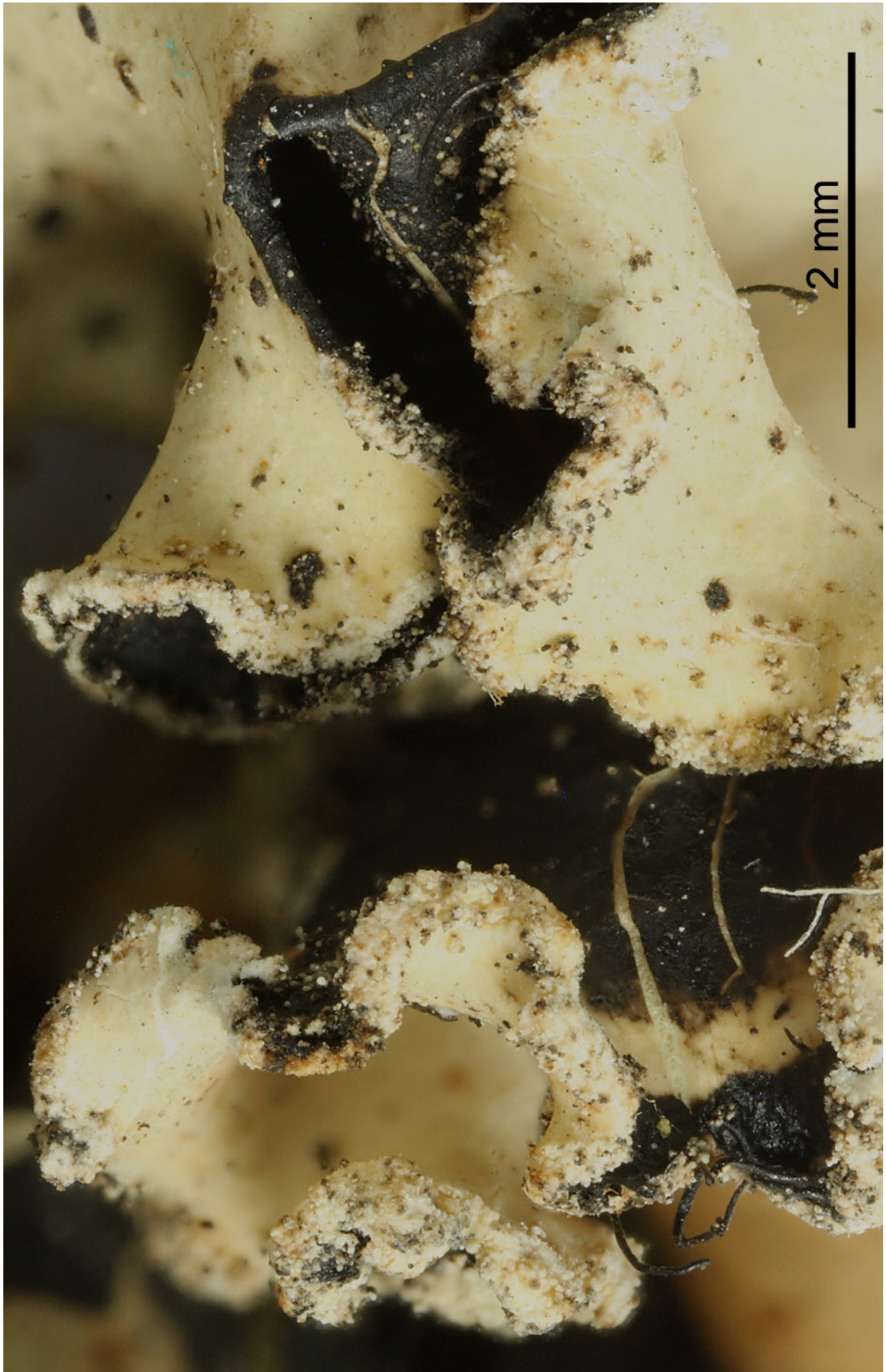
Thallus pale grey, not maculate, 3–10 cm wide. Lobes 0.5-1 cm, black ciliate but main lobes often eciliate, cilia 0.5-1.5 mm. Soralia mainly marginal on more or less ascending lateral lobes. Soredia granular. Isidia absent. Medulla white. Lower surface black, shiny with brown erhizinate marginal zone. Chemistry: atranorin, chloroatranorin, salazinic acid (maj), consalazinic acid (min); cortex K⁺ yellow; medulla K⁺ yellow>red, C⁻, KC⁻, P⁺ orange-red. Pantropical.

[6440], Philippinen, Mindanao, Prov. Misamis Oriental, SW Gingoog City, Barangay Lunutan (08°42.510' N, 125°01.241' E, 1120 m) und am Weg zum Mt. Lumot (Via Haruhay Trail) bis zum Zwischencamp (8°40.713' N, 125°01.649' E, 1680 m). Leg. Schumm 24.08.1999, det. J.A. Elix 2000.





Parmotrema cristiferum



Parmotrema cristiferum