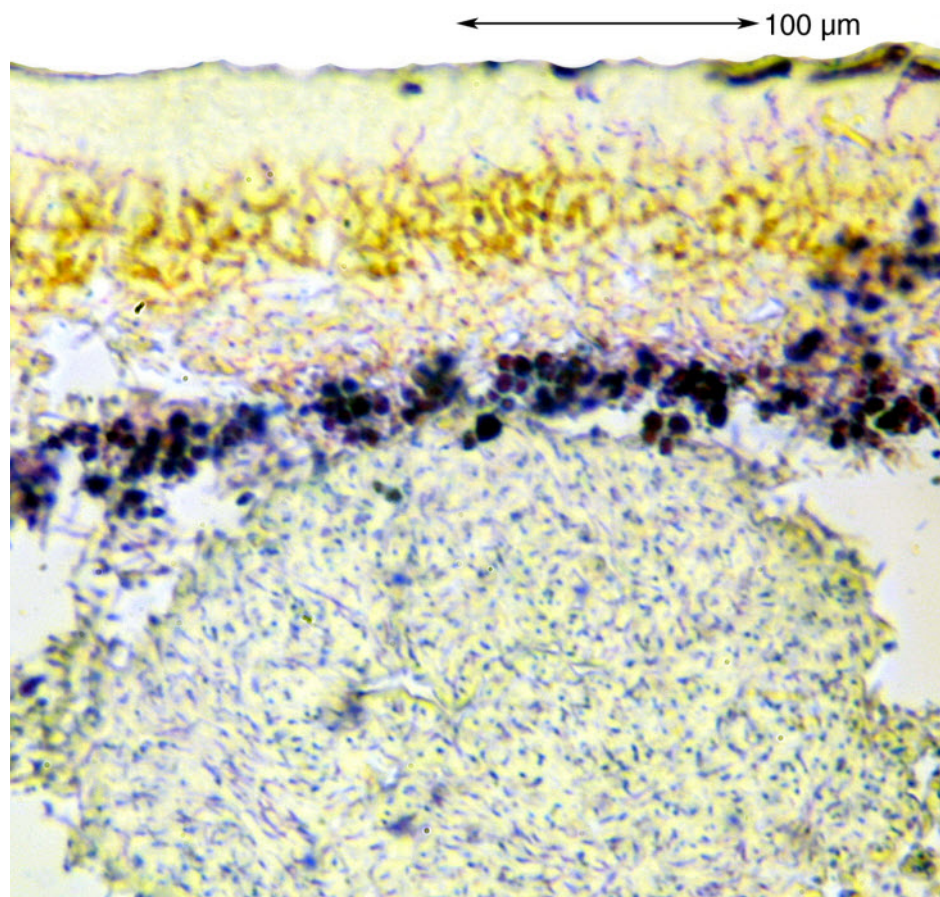
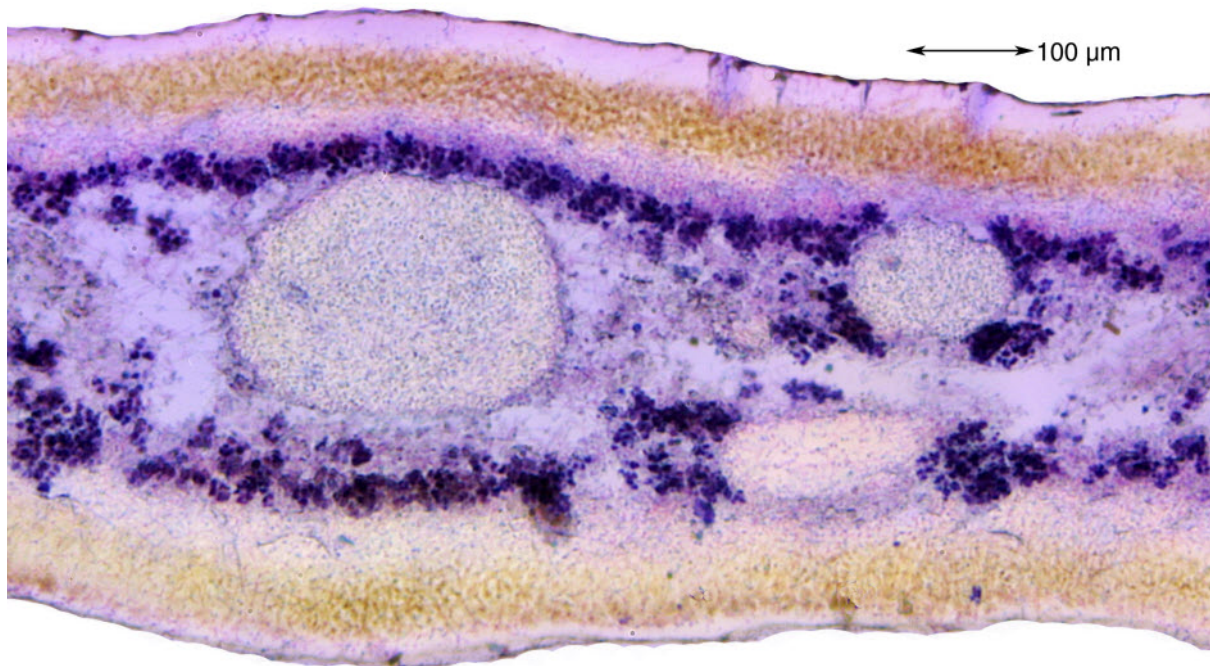


*Ramalina bourgaeana* Mont. ex Nyl.

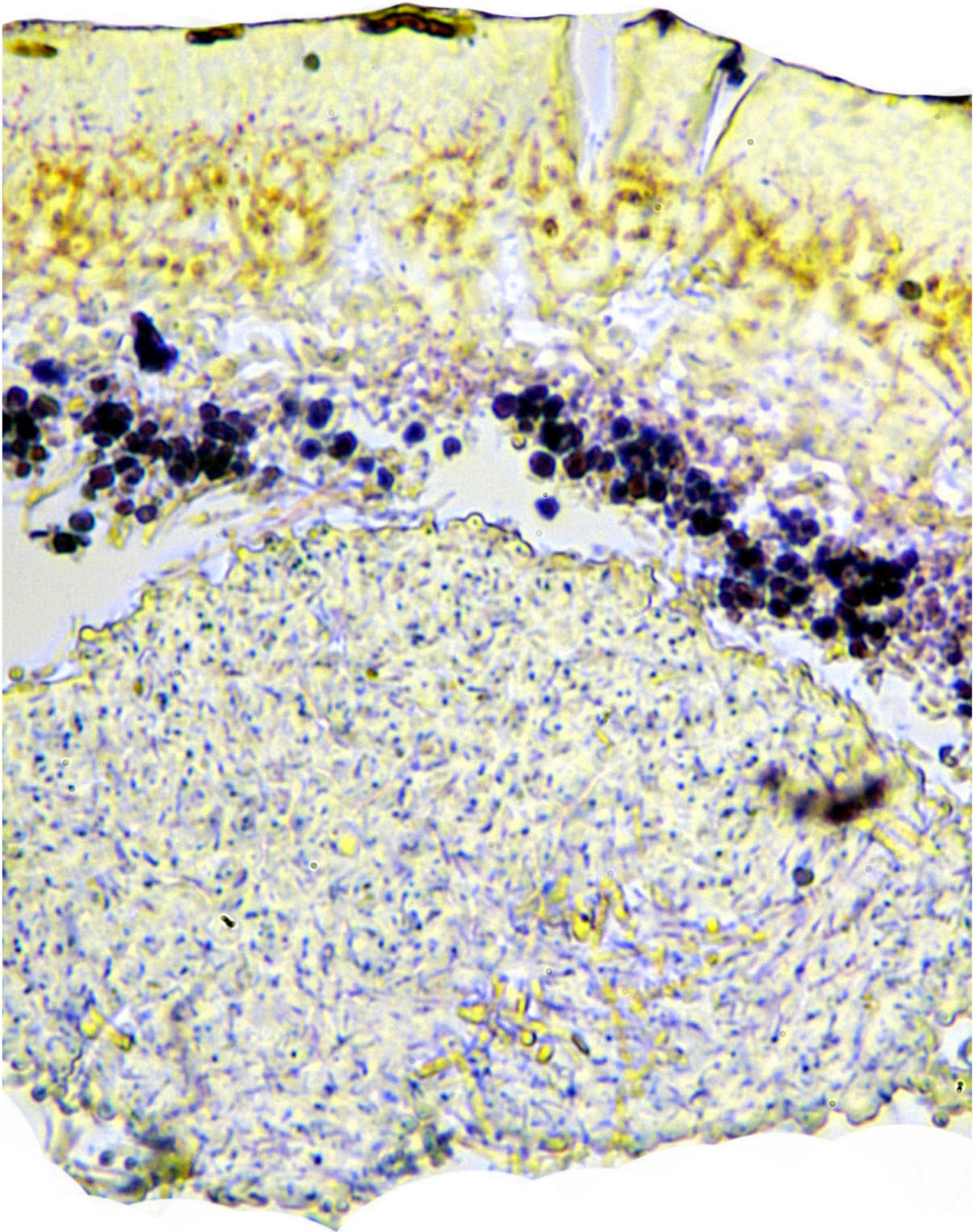
Chemistry: p208/2: bourgaeanic (maj), triterpenoide (min). Dubl. an Aptroot.

[11429], Portugal, Madeira, Ponta de Sao Lourenço, am Ende der Fahrstraße, sonniger, küstennaher Felshang; 32°44.596' N, 16°42.056' W, 93 m, an Felsen. Leg. F. Schumm 28.12.2003, conf. A. Aptroot 2007.





←→ 100 μm



*Ramalina bourgaeana*