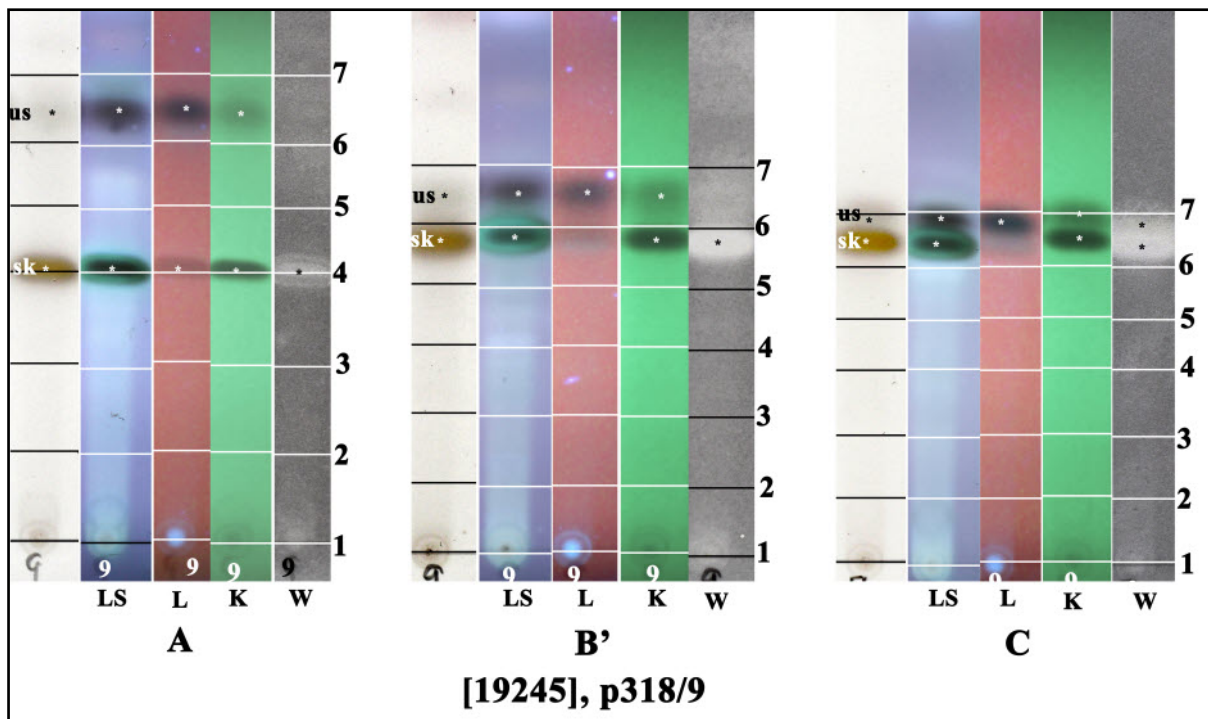


*Ramalina glaucescens* Kremp.

[19245], New Zealand, South Island, Hanmer Forest Park, near Hanmer Springs, on *Alnus* in exotic forest. Leg. J. Johnston (1821), 10.03.1985. Chemistry: sekikaic acid, usnic acid, unknowns (trace) by TLC, HPLC anal. J. Johnston & G.A. Jenkins.





us: usnic acid, sk: sekikaic acid

*Ramalina glaucescens*