

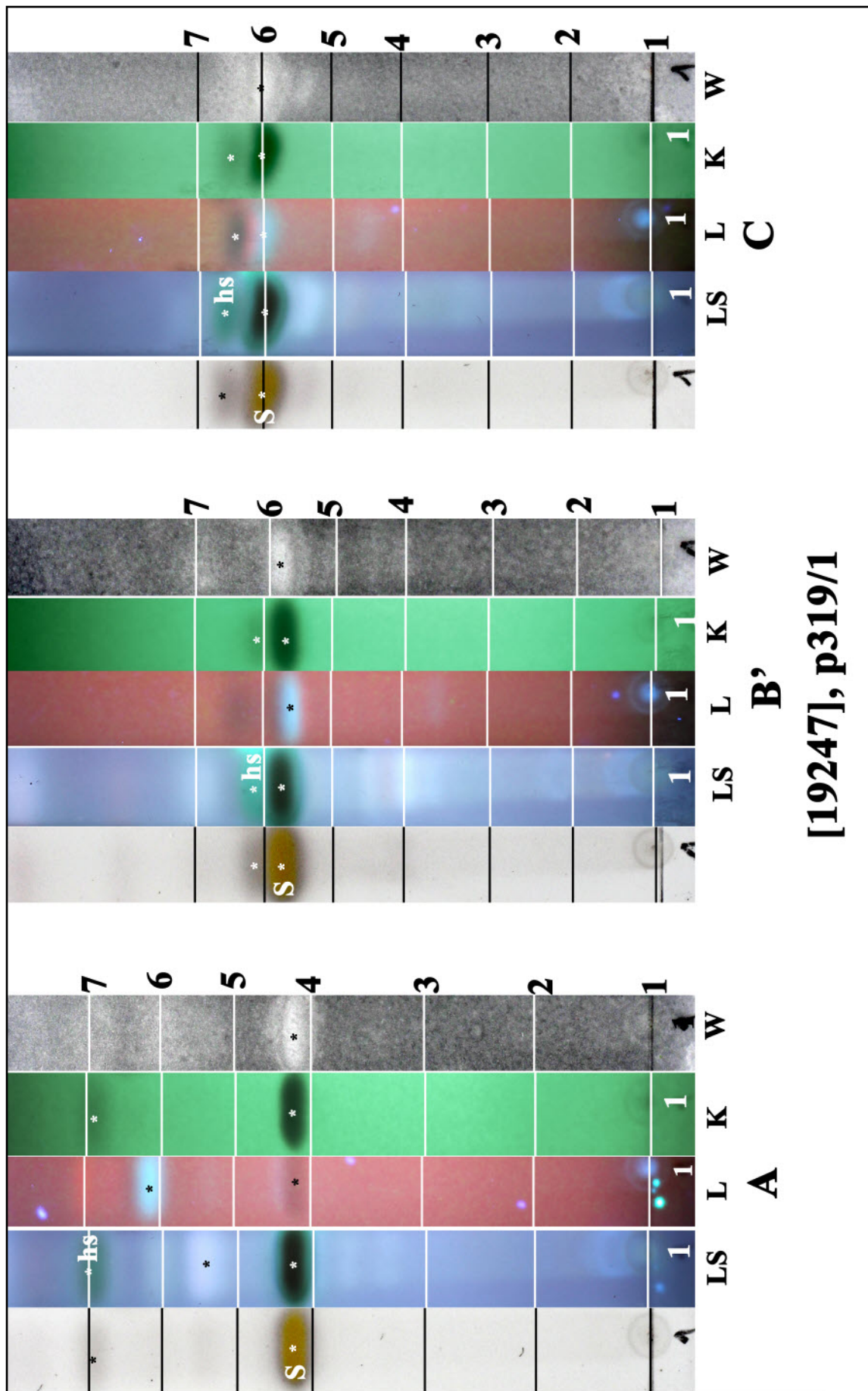
Ramalina glaucescens Kremp.
[= *Ramalina lacerata* Müll.Arg.]

[19247], Australia, Victoria, Omeo, 37°06' S, 147°36' E, 720 m, growing on stems of planted exotic trees in town street. Leg. H. Streimann (49415), 02.05.1992. Chemistry: usnic acid by TLC, anal. J.A. Elix & S.A. Elix. LICHENES AUSTRALASICI EXSICCATI NO. 274. Distributed as *Ramalina lacerata* Müll.Arg.

I think I have sekikaic acid in my TLC (in B' slower than divaricatic).
The green shadow in LS (7 / 6.1 / 6.6) ?



Ramalina glaucescens



[19247], p319/1

s: sekikaic acid, hs: homosekikaic acid