

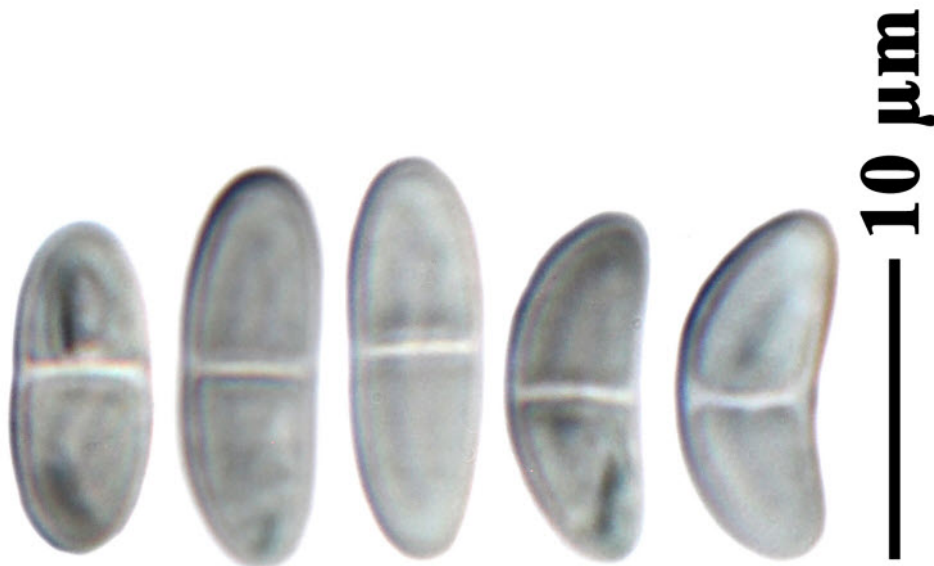
*Ramalina leiodea* (Nyl.) Nyl.

[= *Ramalina subfraxinea* var. *leiodea* (Nyl.) N. Stevens]

[= *Ramalina boninensis* Asah.]

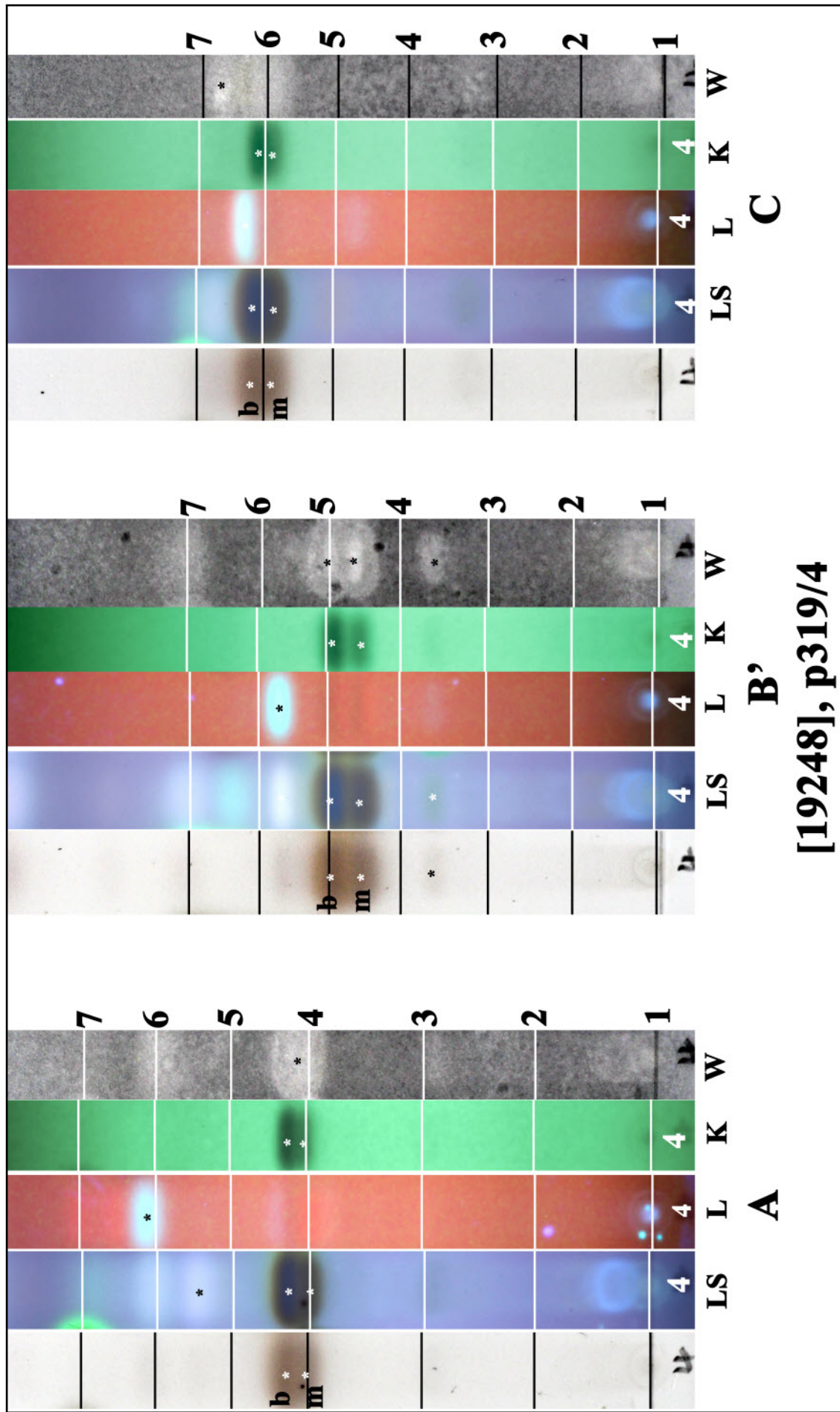
Thallus corticolous, grey-green, caespitose, rigid, erect to subpendulous, up to 4 cm high, exceptionally to 9 cm; branching subdichotomous, sparse to moderate; branch width (0.5-)2-4 mm, branches compressed, flat or canaliculate when narrow, apices attenuate; surface matt, smooth to rugose, short linear pseudocyphellae sometimes present; holdfast delimited; soralia absent. Apothecia common, marginal and subterminal, rarely laminal, small thalli produce subterminal apothecia subtended by a spur; disc 2-3 mm diam., concave to plane; margin entire or incised at maturity; spores ellipsoid, straight or slightly curved; 10-12(-16) x 4-5  $\mu$ m. Chemistry: boninic acid (major), 2-*O*-methylsekikaic acid (submajor), 2,4'-di-*O*-methylnorsekikaic acid, 4'-*O*-methylpaludodic acid, 4,4'-di-*O*-methylcryptochlorophaeic acid, usnic acid. Lit. Stevens, G.N.(1987).

[19248], Norfolk Island, Rocky Point Reserve, 29°03' S, 167°55' E, 40 m, growing on twigs of *Eucalyptus* in mixed *Araucaria* and exotic woodland. Leg. J.A. Elix (18527) & H. Streimann, 05.12. 1984. Chemistry: boninic acid (major), 2-*O*-methylsekikaic acid (major), 4,4'-di-*O*-methylcryptochlorophaeic acid (trace), 2,4'-di-*O*-methylnorsekikaic acid (minor), 4'-*O*-methylpaludodic acid (minor), 4'-*O*-methylcryptochlorophaeic acid (trace), unknowns (trace) by HPLC, anal. G.A. Jenkins. LICHENES AUSTRALASICI EXSICCATI NO. 097.





*Ramalina leiodea*



b: boninic acid, m: 2-O-methylsekikaic acid