

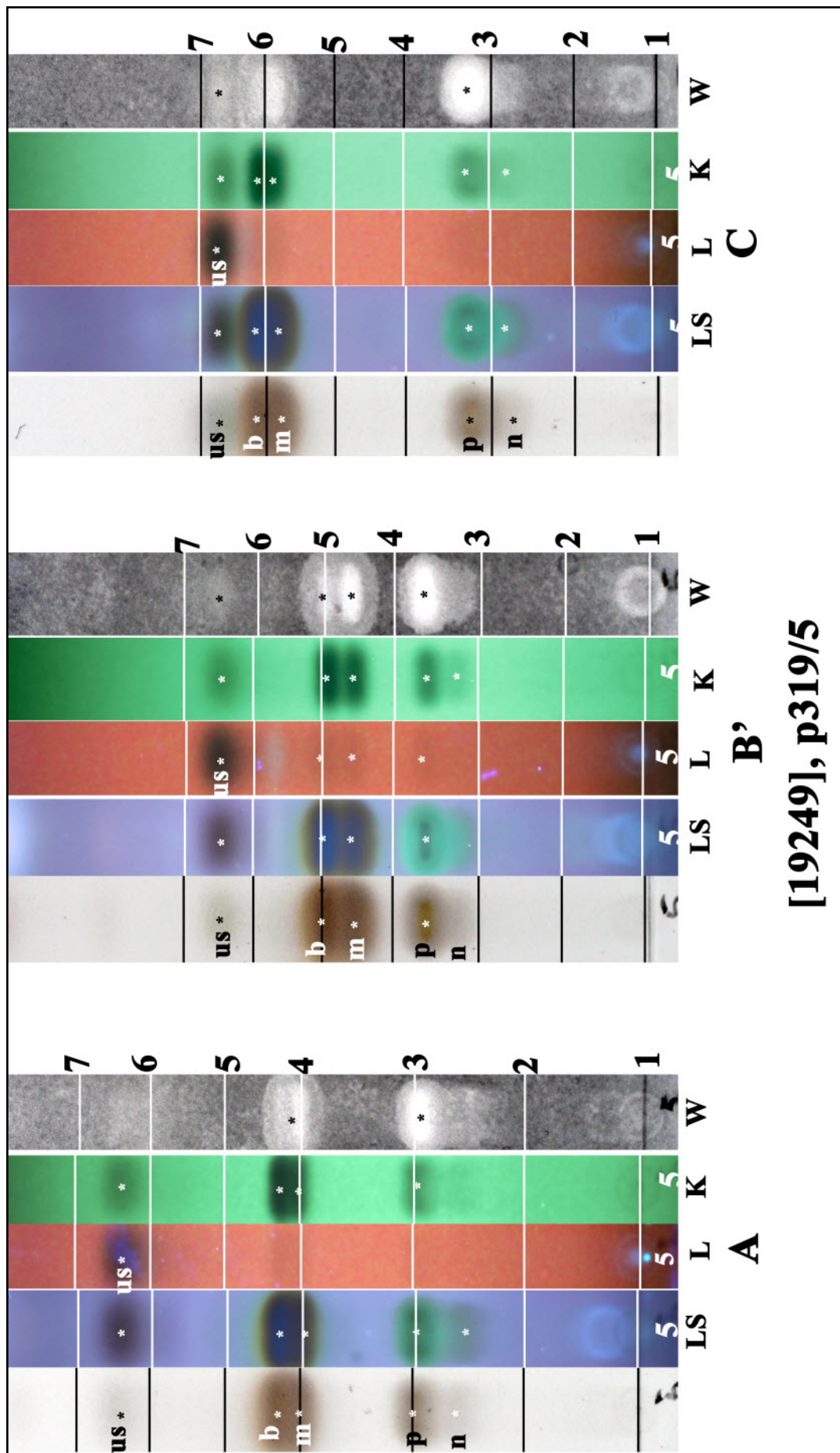
***Ramalina leiodea* (Nyl.) Nyl.**

[19249], Australia, Queensland, Tin Can Inlet, Tin Can Bay, 25°54' S, 153°01' E, sea level, growing on *Rhizophora stylosa* in strand vegetation along the foreshore. Leg. J.A. Elix (22844), 2.07.1989. Chemistry: usnic acid (trace), boninic acid (major), 2-*O*-methylsekikaic acid (major), 4'-*O*-methylpaludosic acid (minor), 4,4'-di-*O*-methylcryptochlorophaeic (trace), 2,4'-di-*O*-methylnorsekikaic acid (minor), 4'-*O*-methylcryptochlorophaeic acid (trace), unknowns (trace) by HPLC, TLC, anal Q. Lin. LICHENES AUSTRALASICI EXSICCATI NO. 242.





Ramalina leiodea



us: usnic acid, b: boninic acid, m: 2-O-methylsekikaic acid,
 p: 4'-O-methylpaludosic acid, n: 2,4'-di-O-methylnorsekikaic acid