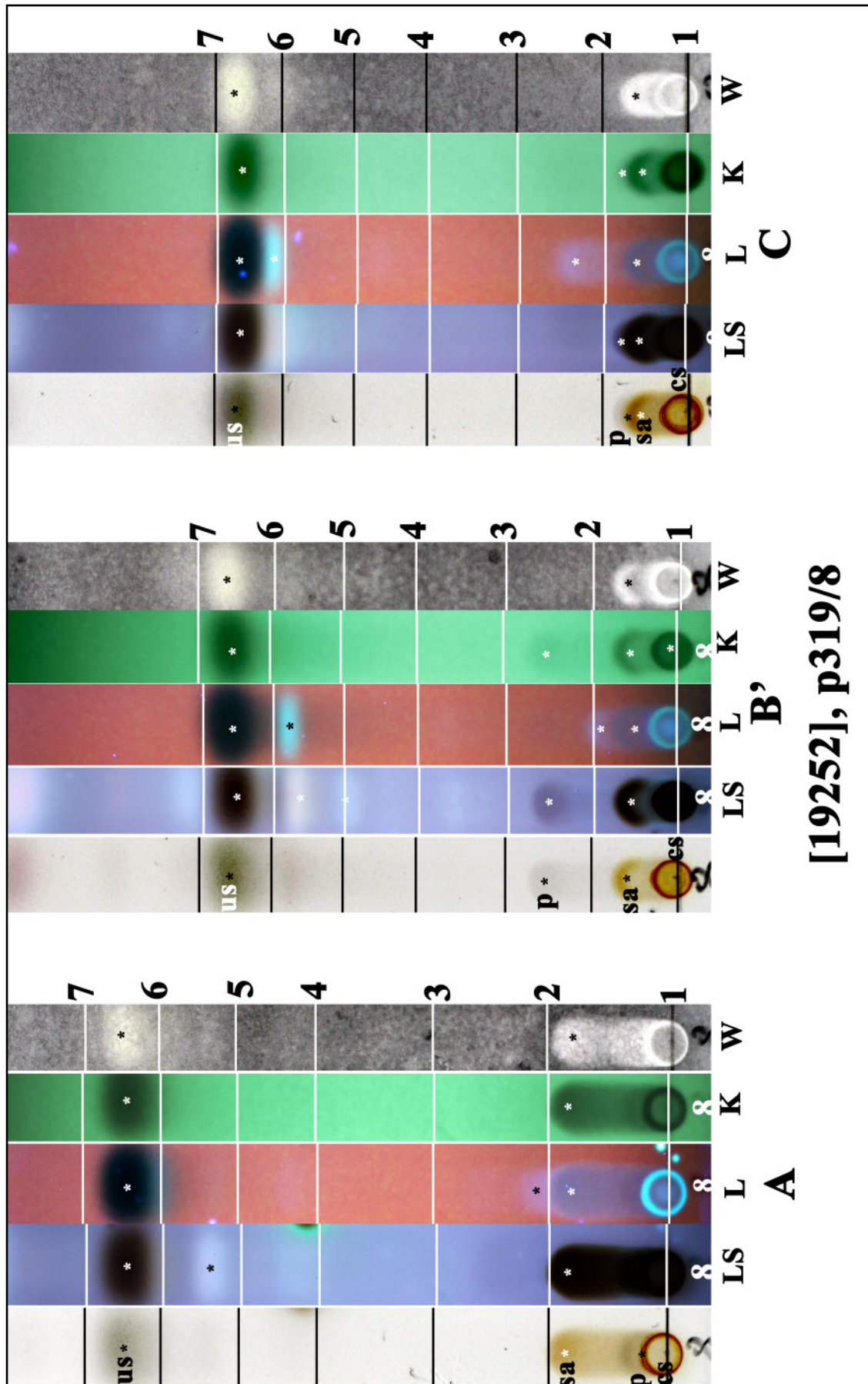


Ramalina pacifica Asahina

[19252], Norfolk Island, Rocky Point Reserve, 29°03' S, 167°55' E, 60 m, growing on *Melia* in mixed *Araucaria* and exotic woodland. Leg. J.A. Elix (18240) & H. Streimann, 02.12.1984. Chemistry: salazinic acid (major), consalazinic acid (minor), protocetraric acid (trace), usnic acid (trace) by HPLC, anal. G.A. Jenkins. LICHENES AUSTRALASICI EXSICCATI NO. 098.





[19252], p319/8

us: usnic acid, sa: salazinic acid, cs: consalazinic acid, p: protocetraric acid