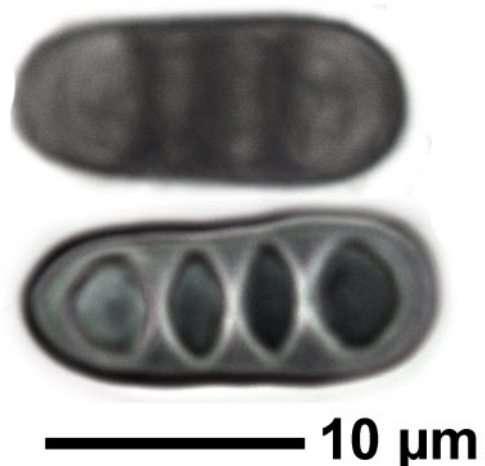
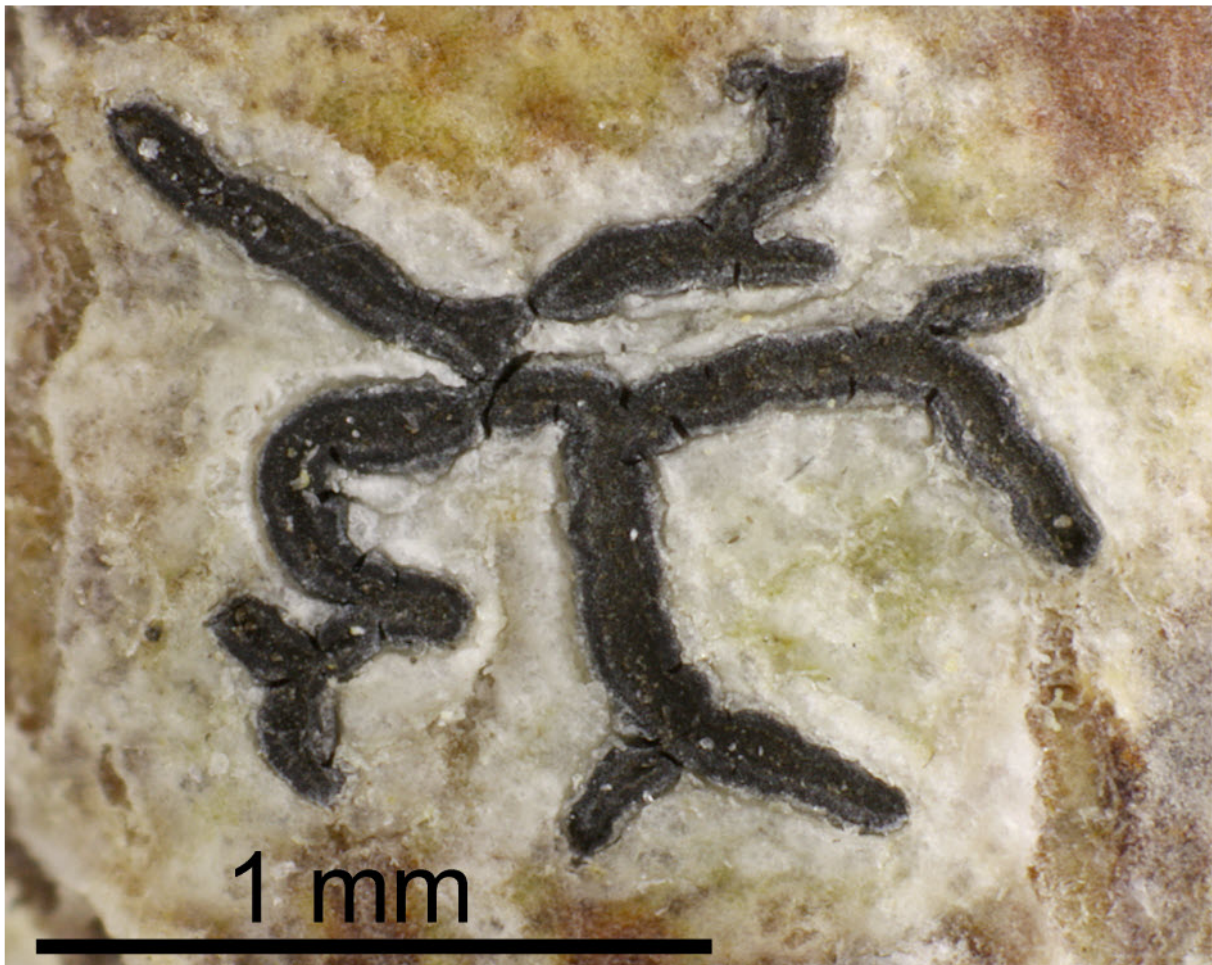


*Sarcographa tricola* (Ach.) Müll. Arg.

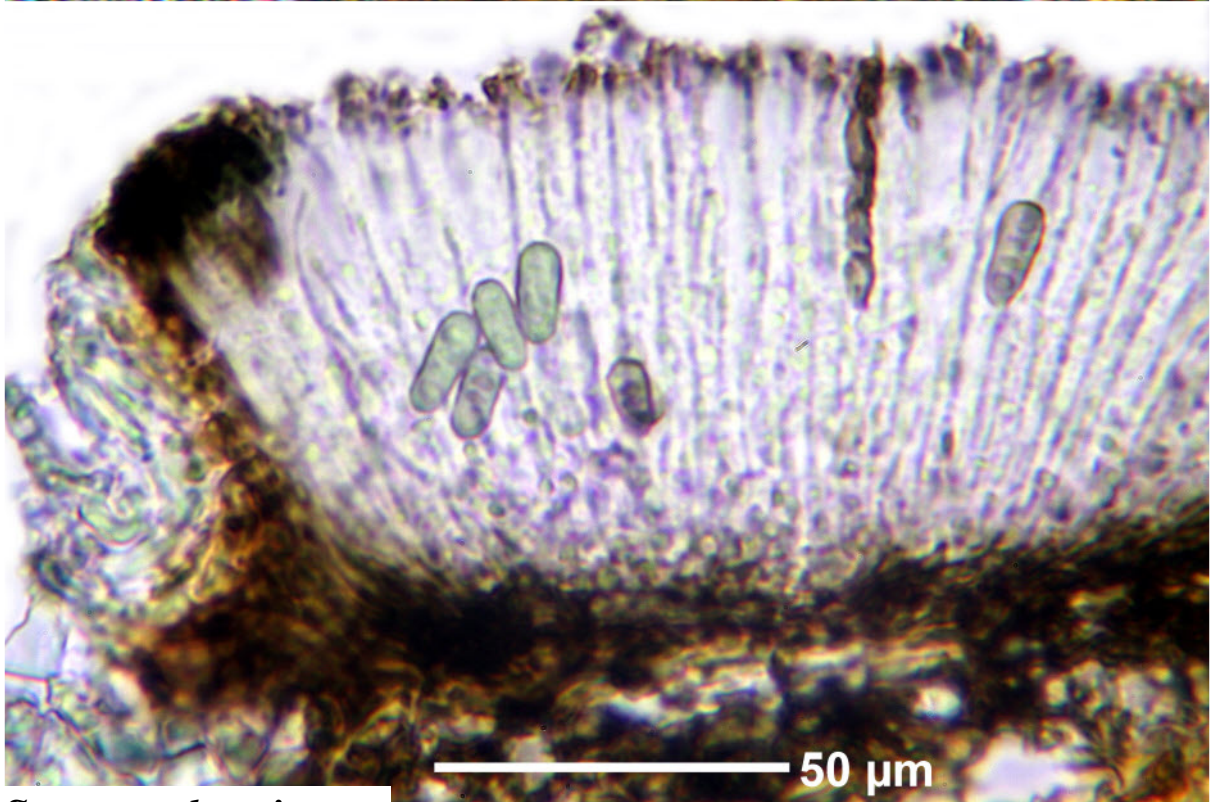
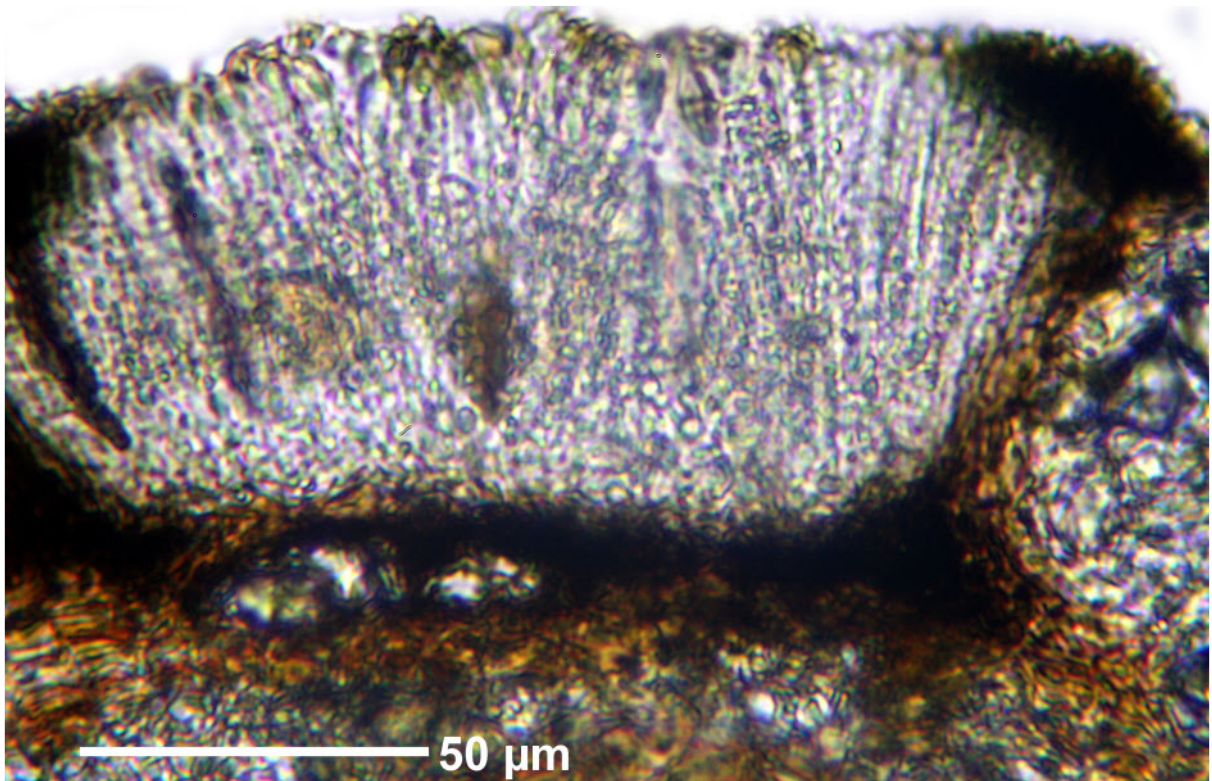
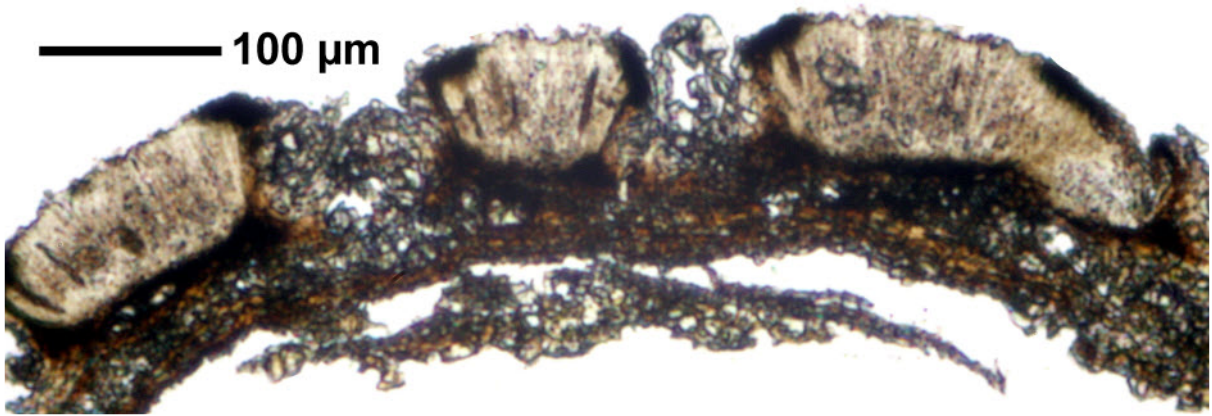
Spores brown, 8/ascus, 3-septate, (13)14-21 x 5-7  $\mu$ m. Hymenium interspersed, I-. Paraphyses branched. Excipulum black brown, entire. Between the lirellae with many crystals but not carbonized. Chemistry: nil, thallus K-, P-. Pantropical.

[14466], Seychelles, Praslin, Nationalpark Sentier Glacier Noire, 4°19.916' S, 55°44.465' E, ca. 370 m, auf Granitfelsen. Leg. F. Schumm & J.-P. Frahm 30.09.2008, det. A. Aptroot 2008, conf. K. Kalb 2017.





*Sarcographa tricola*



*Sarcographa tricola*