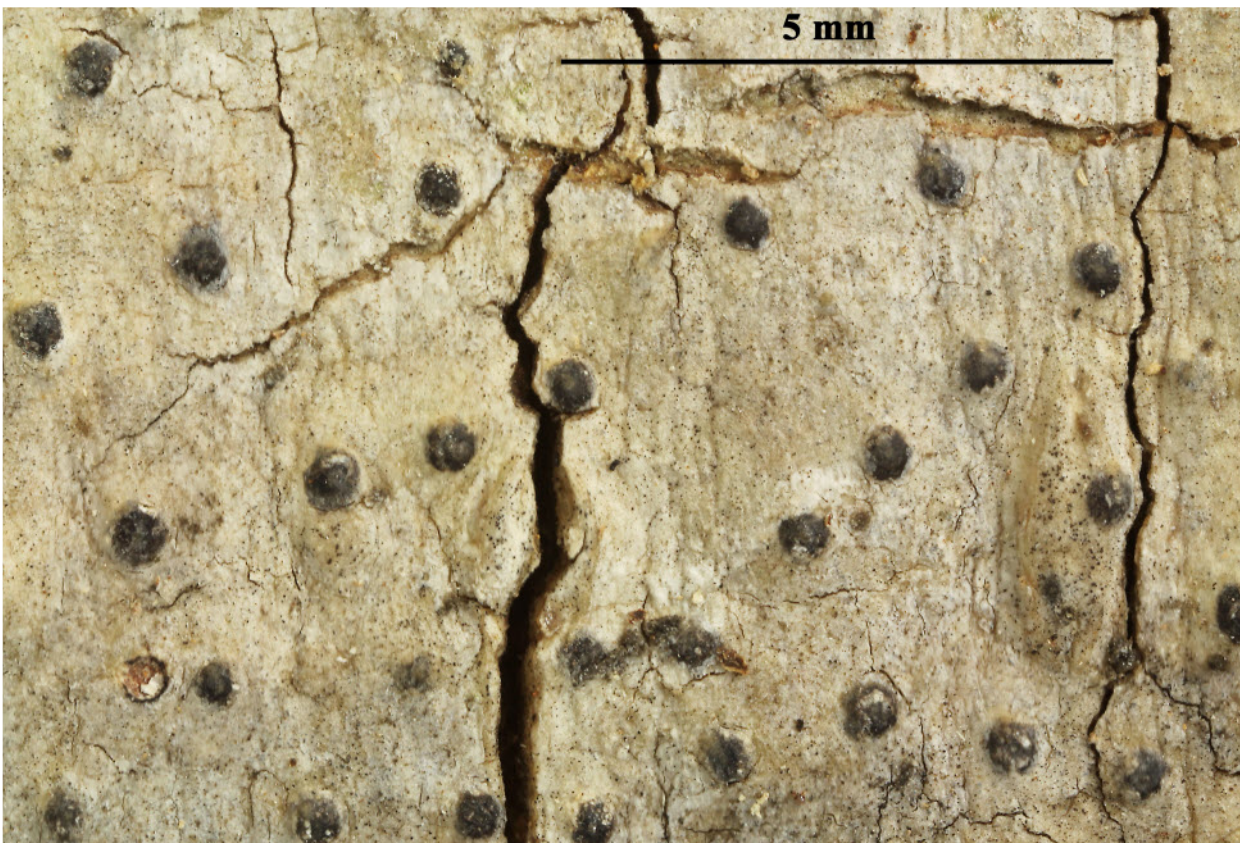
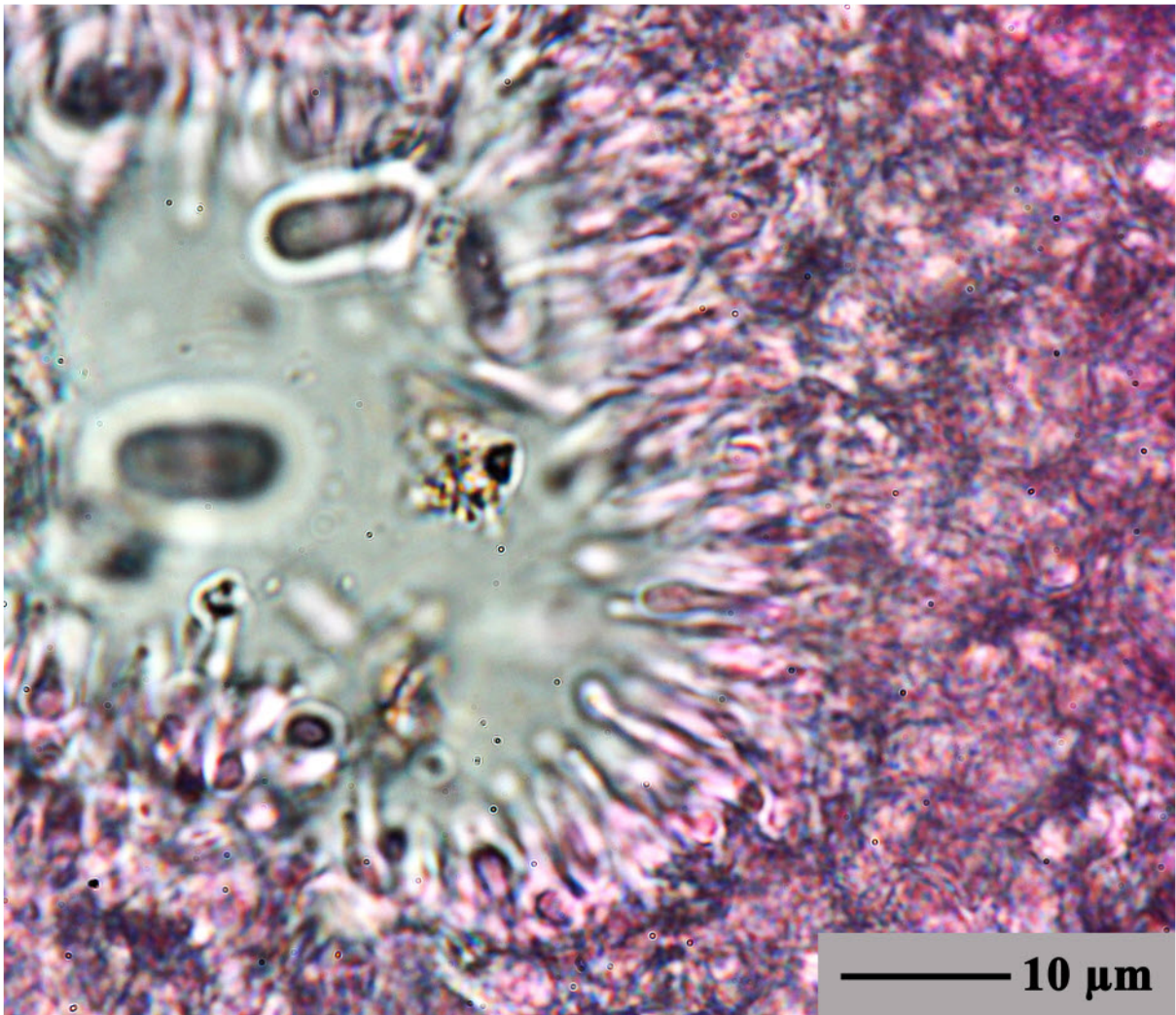
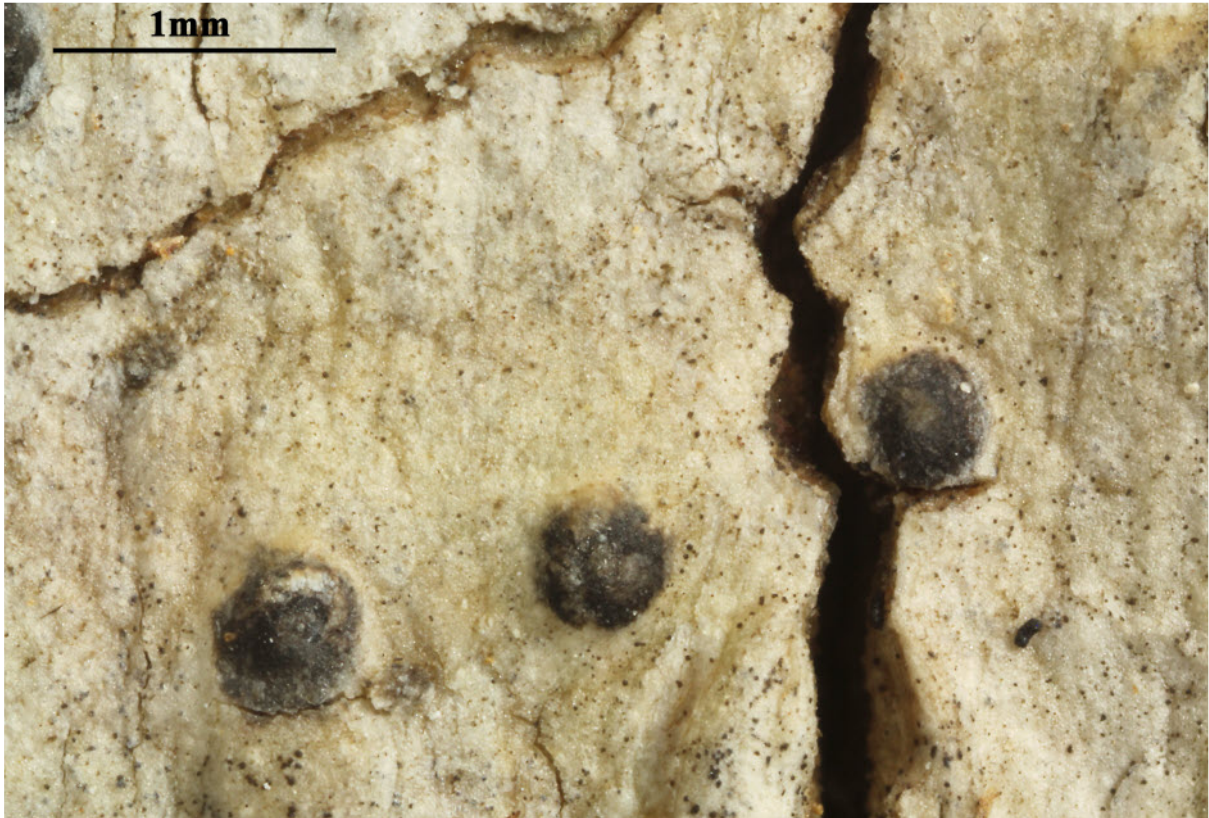


Strigula laureriformis Aptroot & Lücking, in Aptroot, Lücking, Sipman, Umaña & Chaves, Bibliotheca Lichenol. 97: 131 (2008)

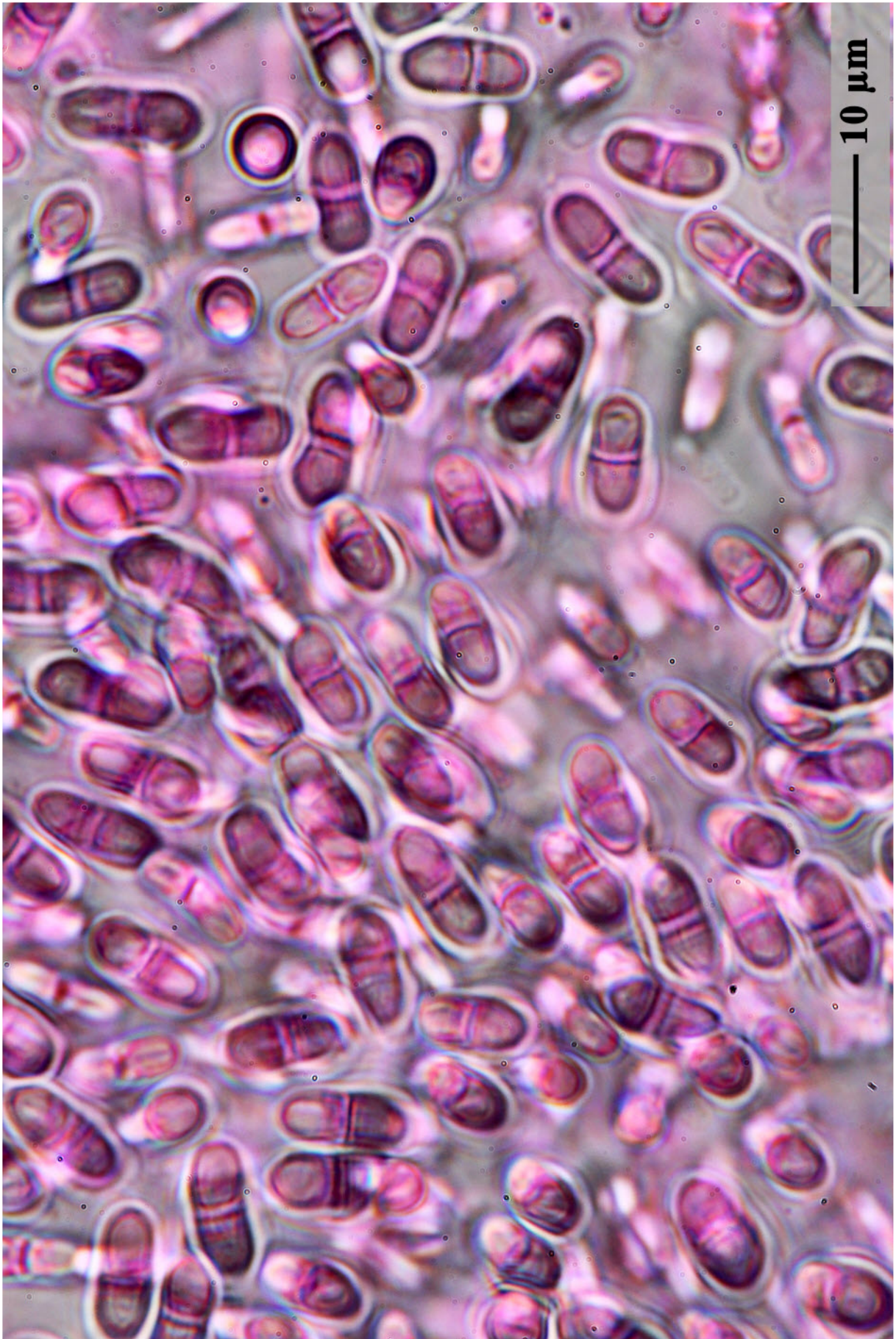
Thallus olivaceous green, thickly corticate, with white pseudocyphellae, covering an area up to 1 cm diam., without hypothallus. Perithecia not observed. Conidiomata pycnidia, immersed in hemispherical thallus warts of 0.4-0.9 mm diam., wall carbonized above, c. 25 μm thick, ostiole flush, c. 0.2 mm diam., black but covered by a thin cortex, surrounded by a pale annulus. Conidia formed inside the pycnidia acrogenously on hyaline, 10 x 1 μm conidiogenous cells which are arranged in a lobed stroma, 1-septate, hyaline, 7-10 x 3-4 μm , sometimes with a flagellar appendage of 30-35 x 0.5 μm at one end.

[ABL21346], Brazil, Ceará, Quixadá. Açude Ceró, trilha da Galinha, on tree bark in caatinga. Leg. M. Cáceres & A. Aptroot (no 21346), 31.03.2014, det. A. Aptroot 2014.





Strigula laureriformis



Strigula laureriformis