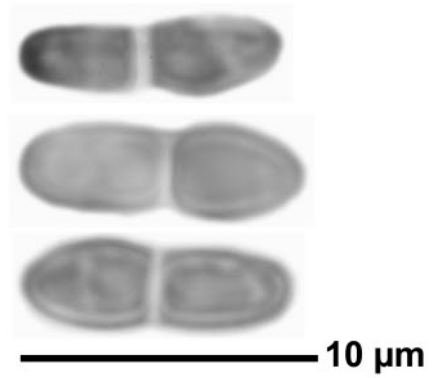
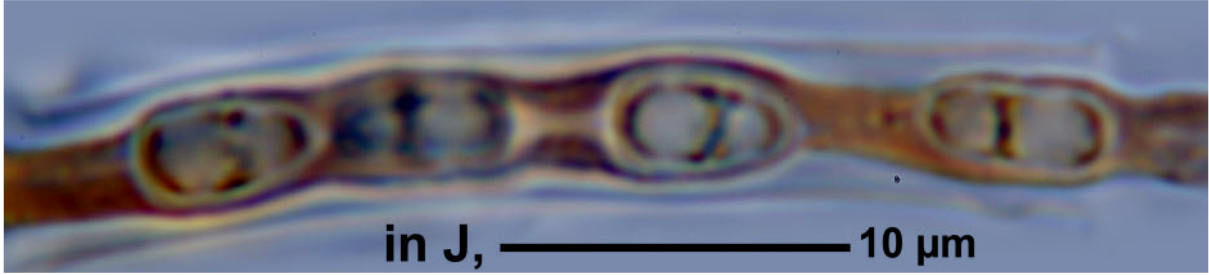
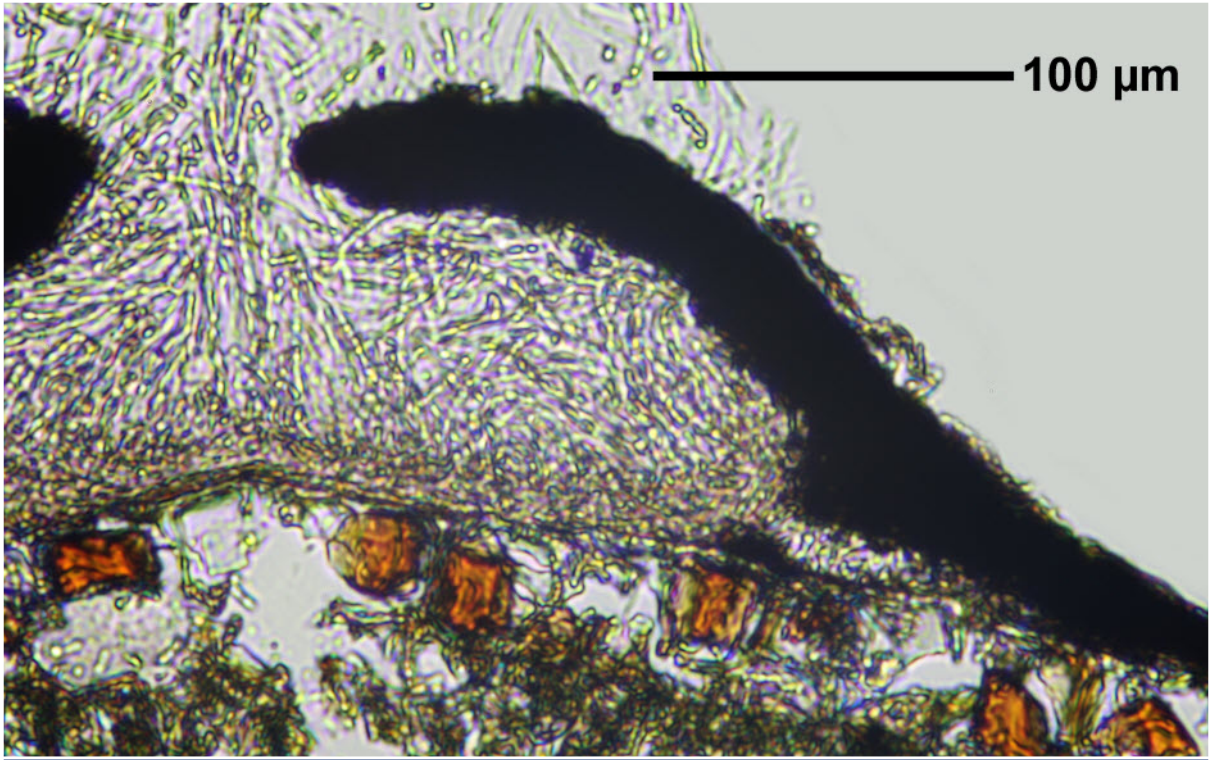


Strigula nitidula Mont.

Thallus green. Spores uniseriate, 1-septate, hyaline, 9-10 x 2,5-3,5 μm , often breaking in 2-part-spores. Pantropical.

[14520], Seychelles, La Digue, zwischen Belle Vue (Nid d' Aigles) und Fond Piment, 4°22' S, 55°50' E, ca. 350 m. Leg. F. Schumm & J.-P. Frahm 03.10.2008, det. A. Aptroot 2008.





Strigula nitidula