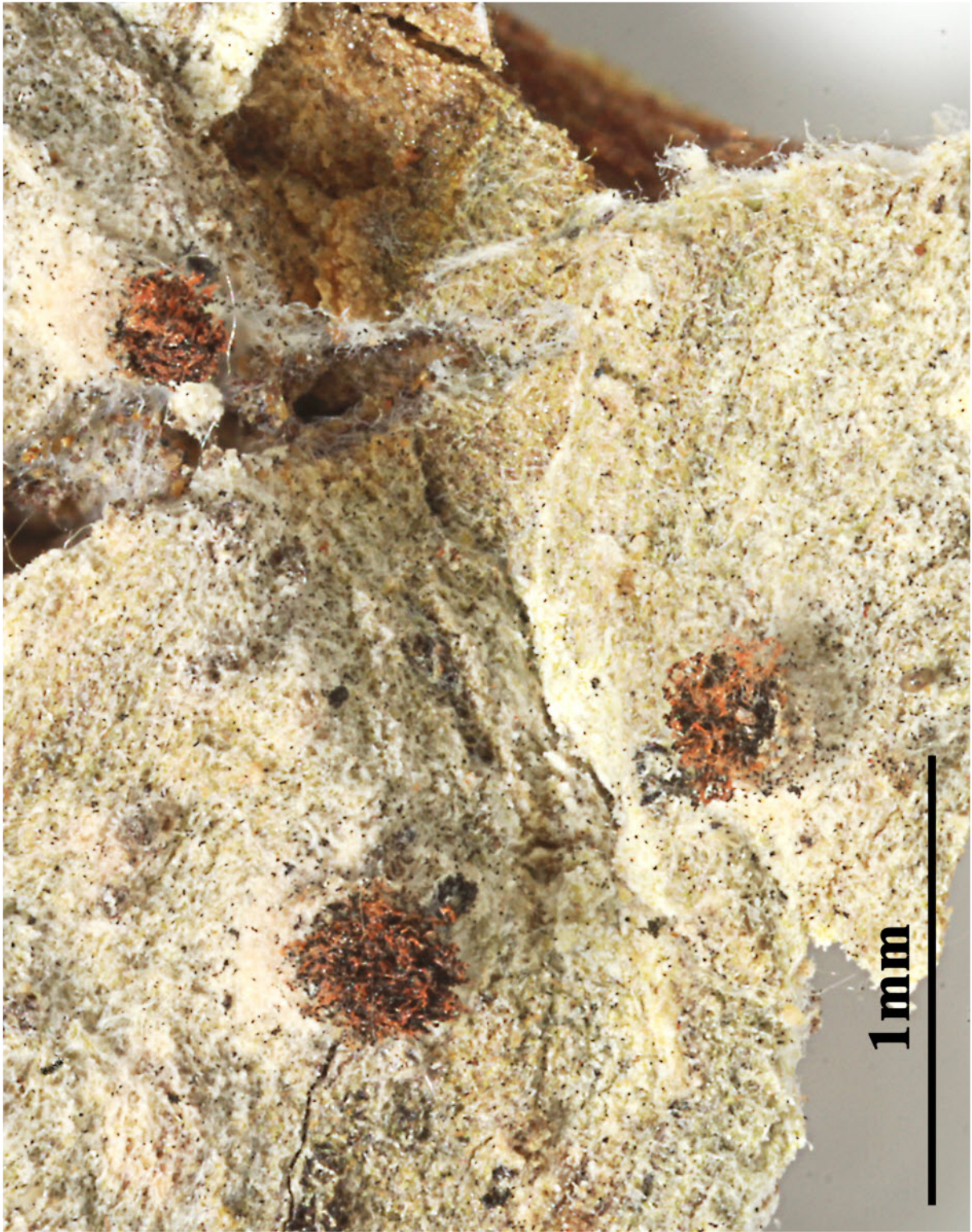


*Tylophoron rufescens* sp. nov ABL84304

[ABL84304], Brazil, Mato do Grosso, Alta Floresta, RPPN cristalino, 9°55' S, 55°55' W, 250-350 m, on bark. Leg. A. Aptroot (no ABL84304), 22-29.04.2021.





*Tylophoron rufescens* sp. nov.

*Tylophoron rufescens sp. nov.*

*Tylophoron rufescens sp. nov.*