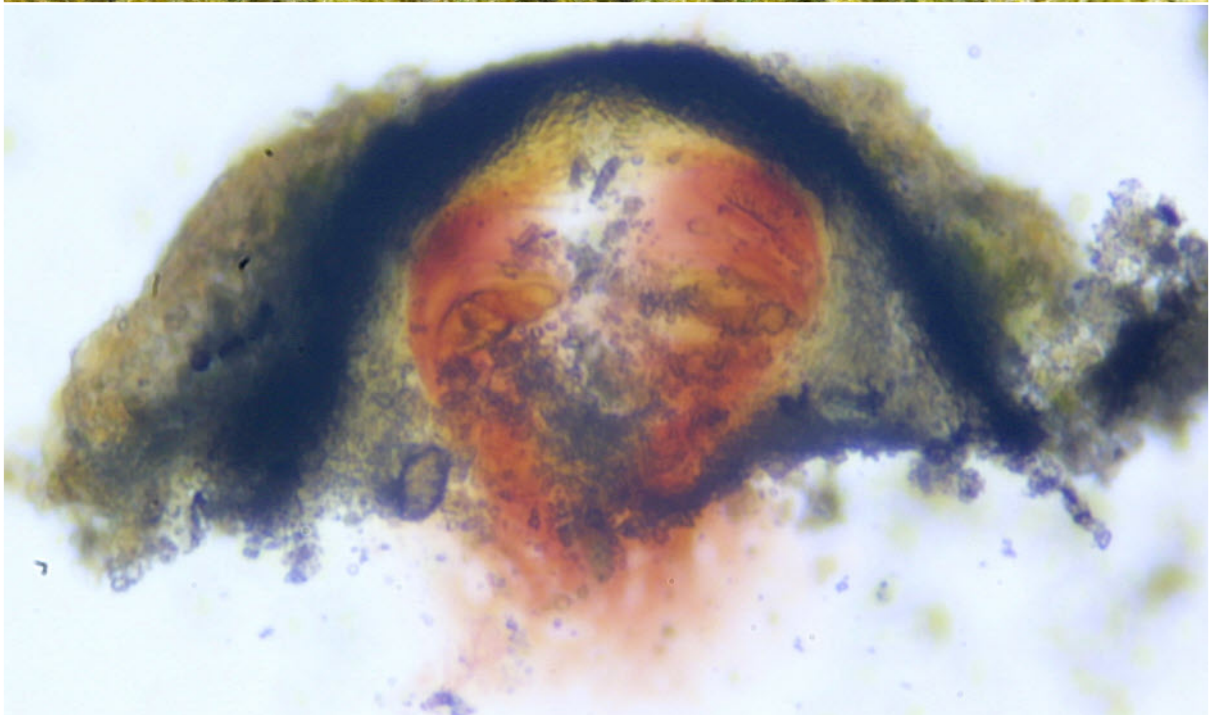
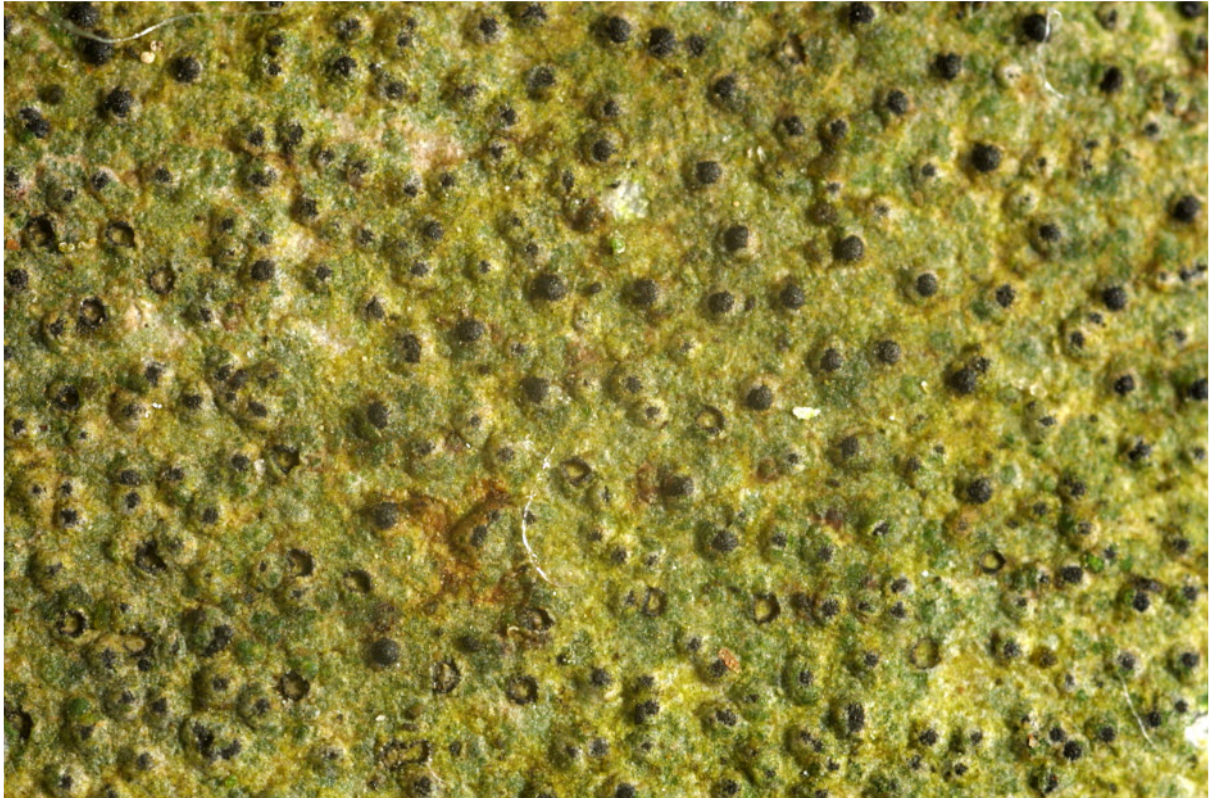
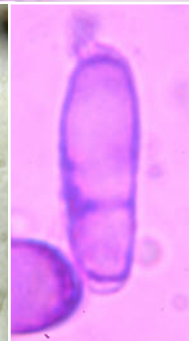
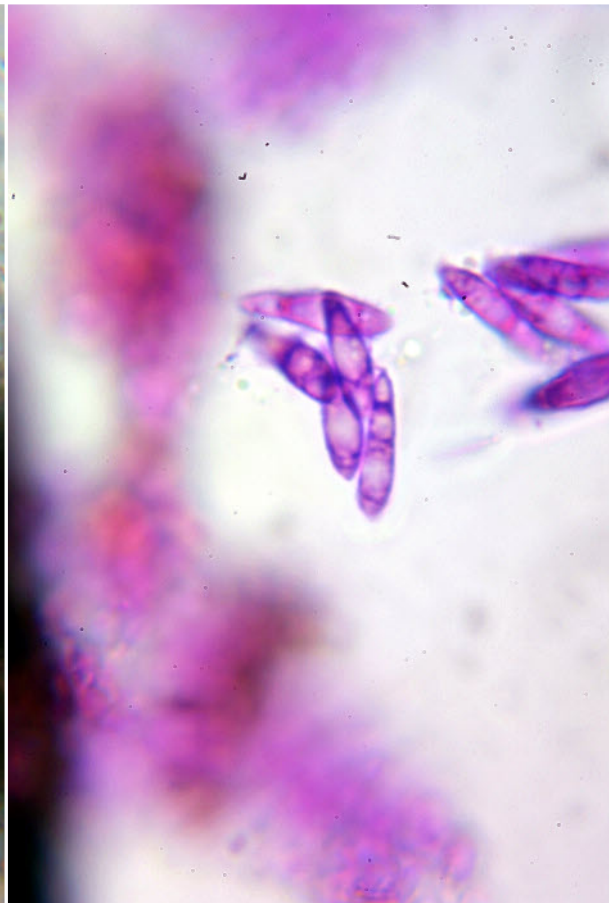
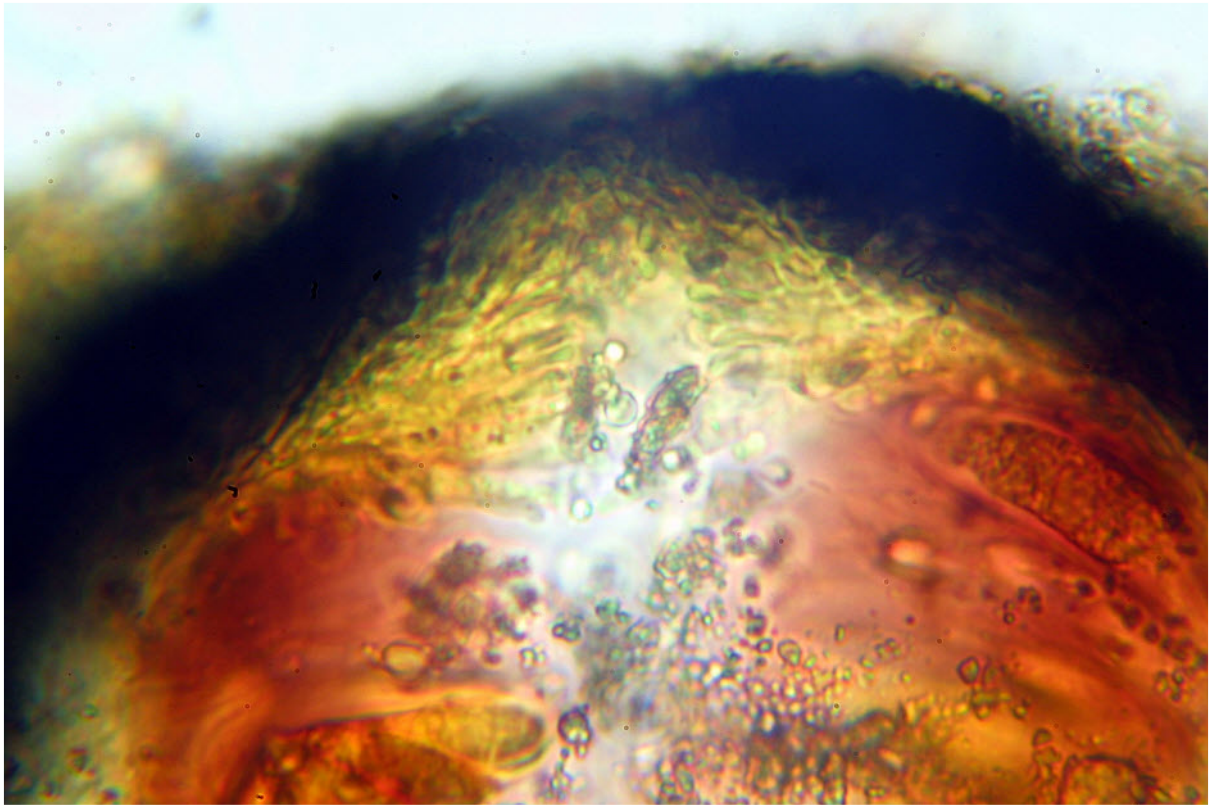


Verrucaria dolosa Hepp

Sporen 1-zellig, hyalin, zu 8, schmal, 18,5-22,8 x 5,5 µm; Paraphysen
hinfällig; Excip. schwarzbraun (33 µm) unten hell, nicht abstehend;
Nucleus J+ rot; Peritheccien im Schnitt 250 µm breit und 145 µm hoch.

[11588], Germany, Baden-Württemberg, Kreis Göppingen, 1 km nörd-
lich Wißgolding, Rand des Stuifens am Hinterbergweg, 48°44,721' N,
9°49,644' W, 644 m, Waldrand, lichtoffen, Kalk(!)-Steinchen am Weg.
Leg. Schumm 20.03.2004, det. Schumm 04.2004.





Verrucaria dolosa