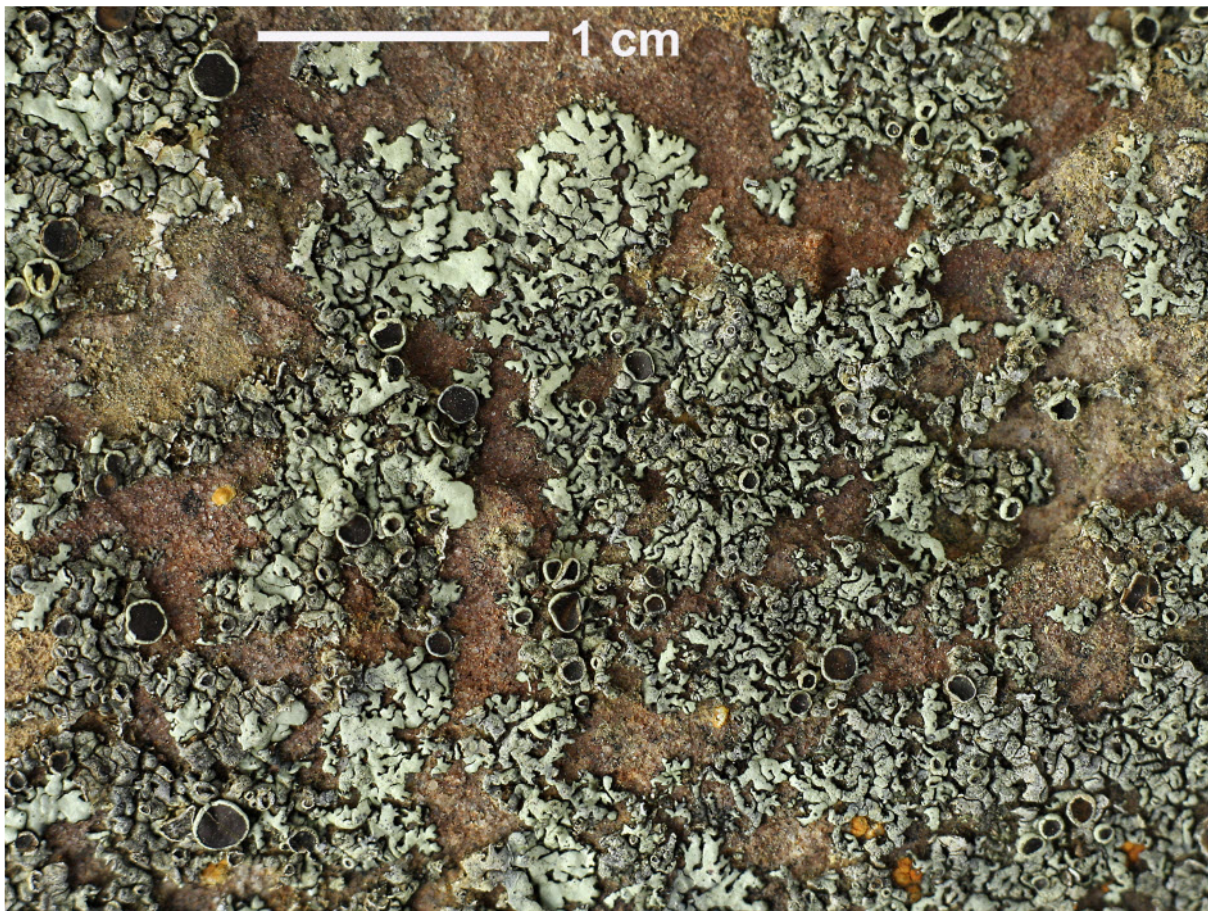
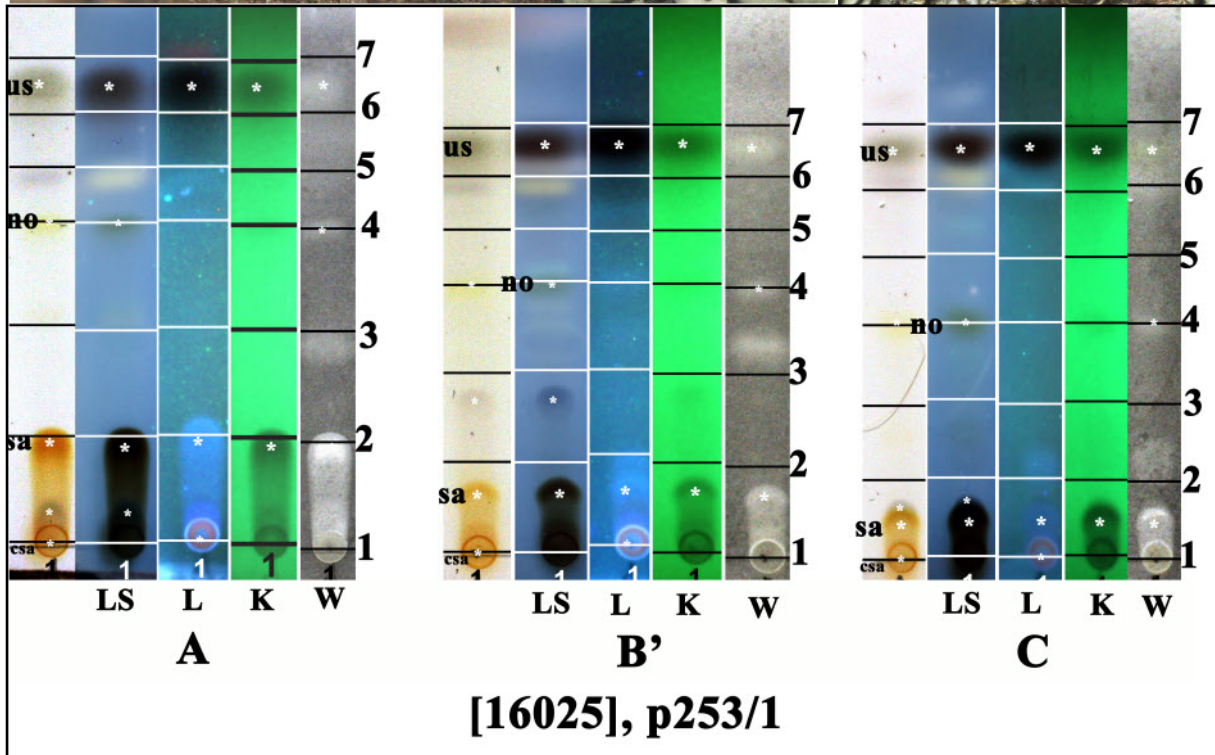
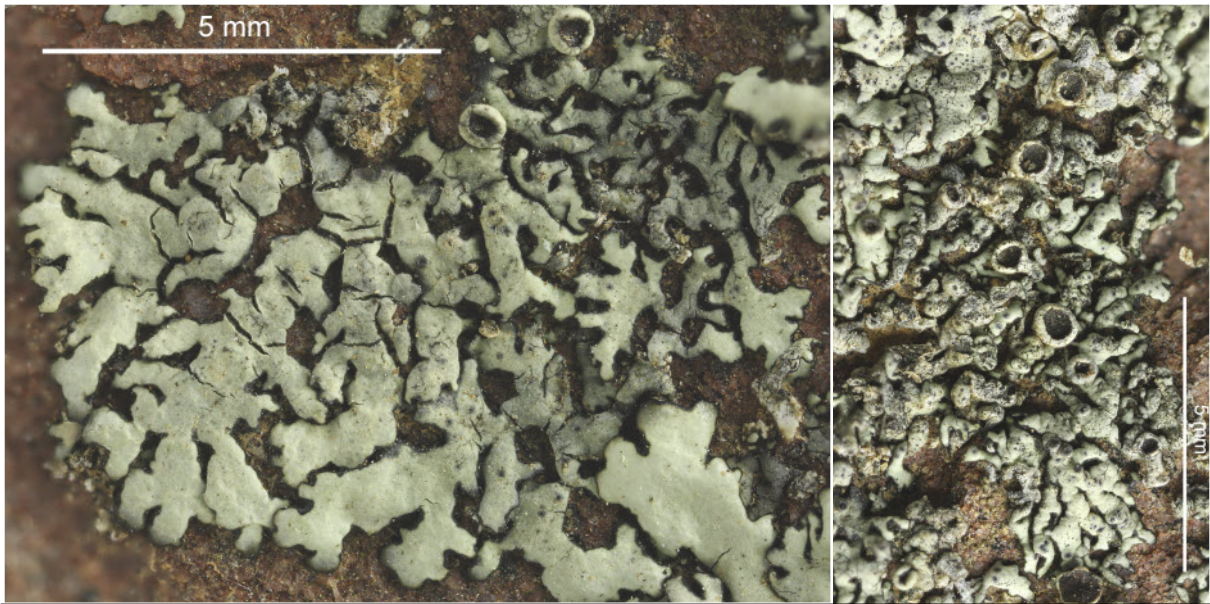


Xanthoparmelia neorimalis (Elix & P.M.Armstr.) Elix & T.H.Nash
[= *Parmelia neorimalis* Elix & P.M.Armstr.]

Thallus tightly adnate, in the centrum nearly crustose, marginal lobes flat, lower surface pale-brown, lacking soredia and isidia. Chemistry: medulla K⁺ yellow the red, C⁻, KC⁻, P⁺ yellow-orange, usnic acid, salazinic acid (major), consalazinic acid.

[16025], Australia, Australian Capital Territory, Black Mountains Reserve. 35,276° S, 149,094° E, 760 m. Leg. J.A. Elix, F. Schumm & E. Stocker-Wörgötter, 07.11.2009. Chemistry: usnic acid, salazinic acid (major), consalazinc acid, norstictic acid (trace) by TLC, anal. F. Schumm.





us: usnic acid, sa: salazinic acid, csa: consalazinic acid,
no: norstictic acid (trace)

Xanthoparmelia neorimalis