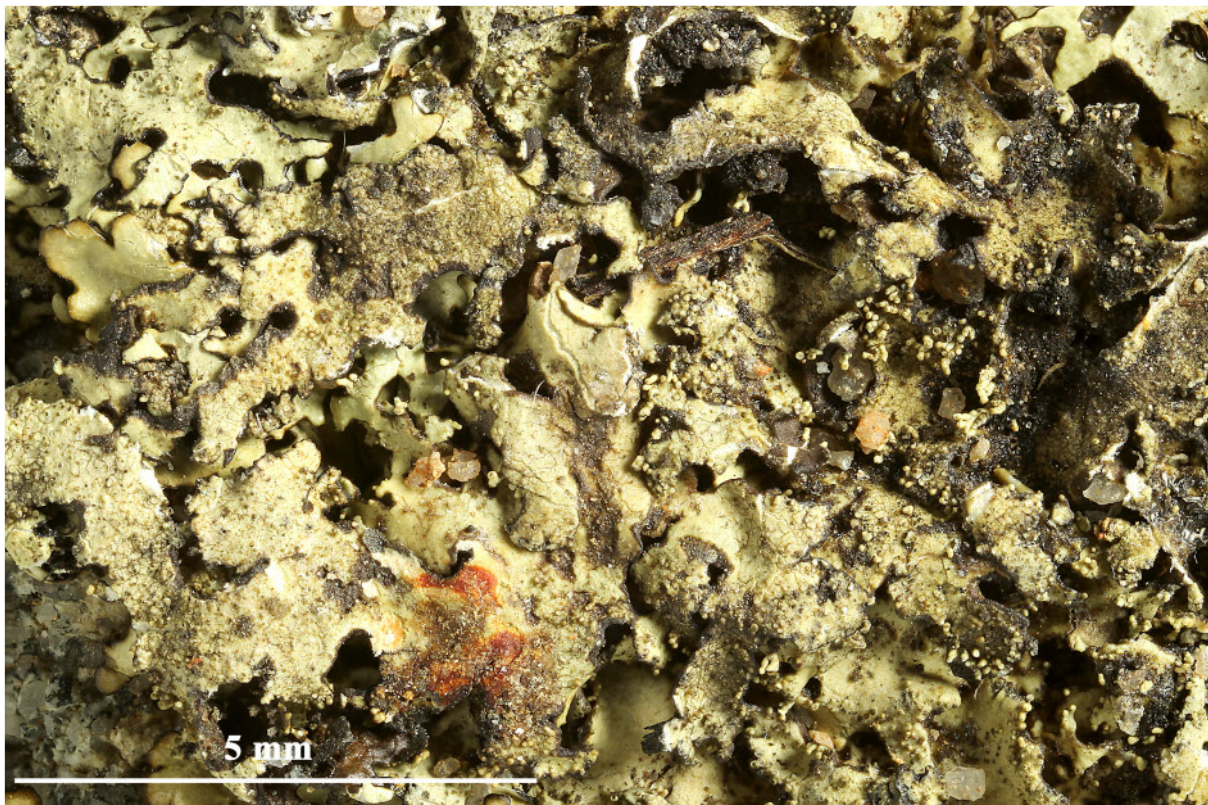


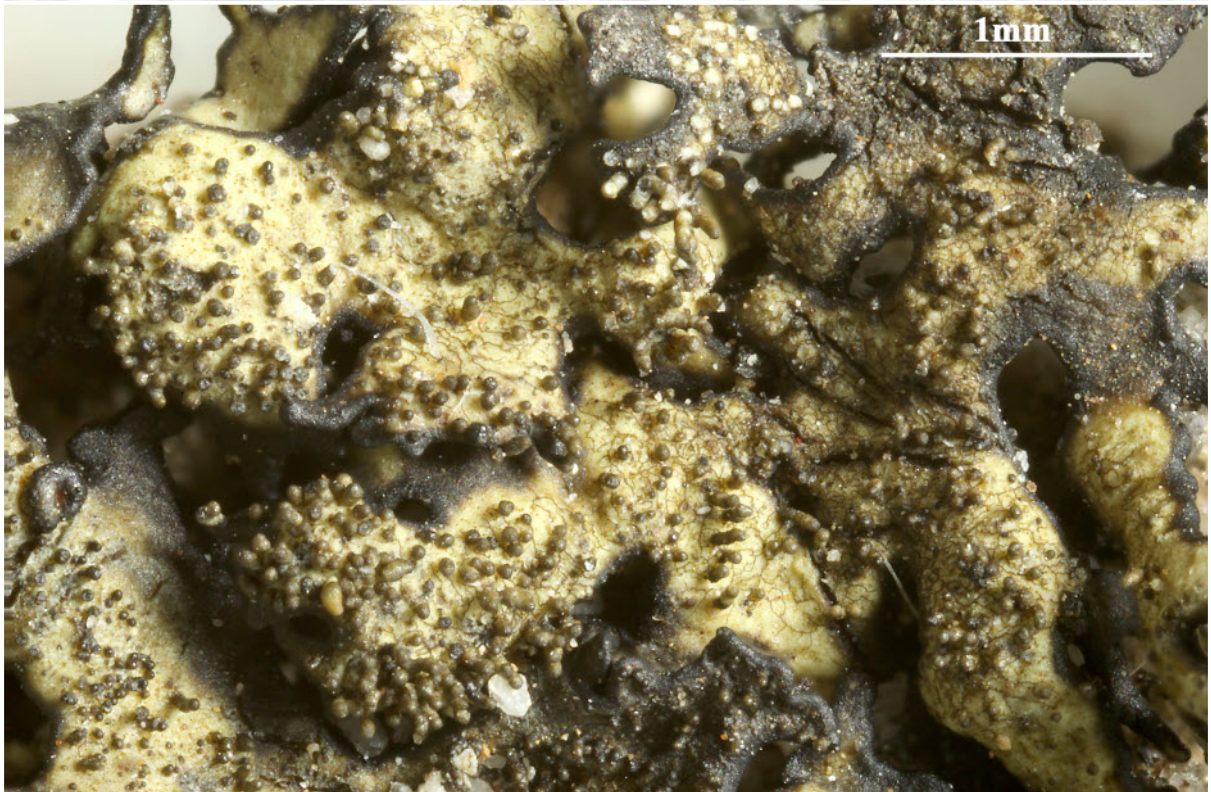
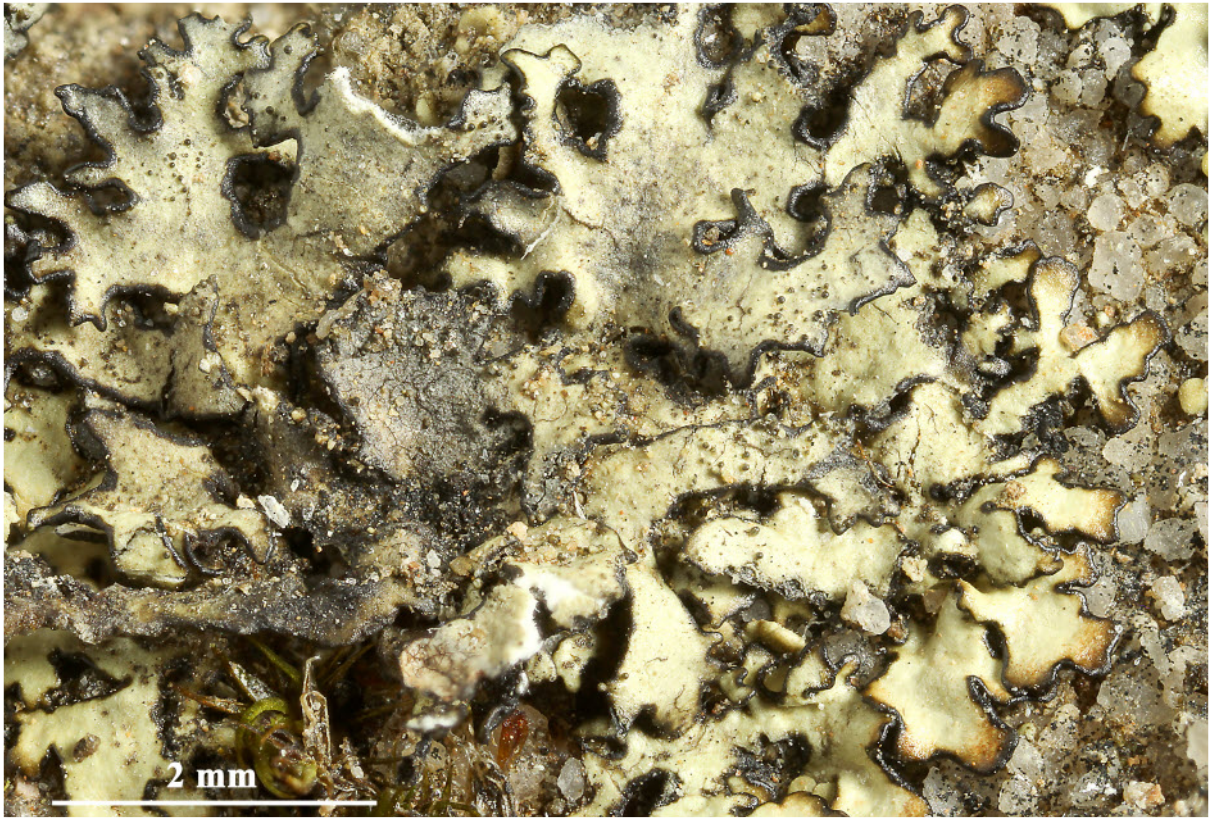
*Xanthoparmelia streimannii* (Elix & P.M.Armstr.) Elix & J.Johnst.  
[= *Parmelia streimannii* Elix & P.M.Armstr.]

Thallus foliose, loosely adnate to adnate. Lobes radiating, imbricate or not, sublinear-elongate, irregularly branched, 0.5-1.5(-2) mm wide. Upper surface yellow-green, darkening with age, emaculate, without soredia; isidia dense, cylindrical, becoming extensively branched and coralloid. Medulla white. Lower surface pale brown. Apothecia 7-9 x 5-6  $\mu$ m. Ascospores 7-9 x 5-6  $\mu$ m. Chemistry: cortex K-, UV-; medulla K+ yellow then dark red, C-, KC-, P+ yellow; usnic acid, norstictic acid, connorstictic acid,  $\pm$ salazinic acid.

[19159], Australia, New South Wales, Morton National Park, 8 km north-east of Nerriga, 35°07' S, 150°08' E, 760 m, growing on flat exposed sandstone rocks in open Eucalyptus woodland. Leg. J.A. Elix (11380) & J. Johnston, 06.10.1983. LICHENES AUSTRALASICI EXSICCATI No. 067. Distributed as *Parmelia streimannii* Elix & P.M.Armstr.

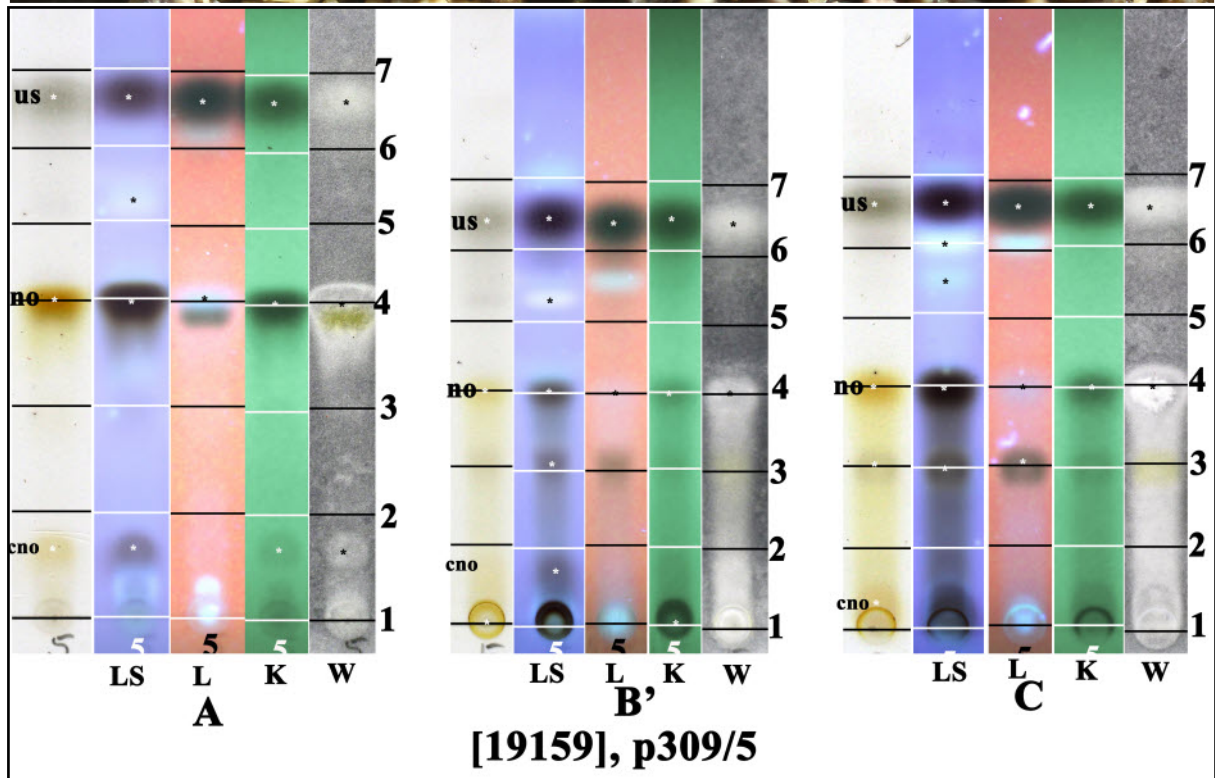
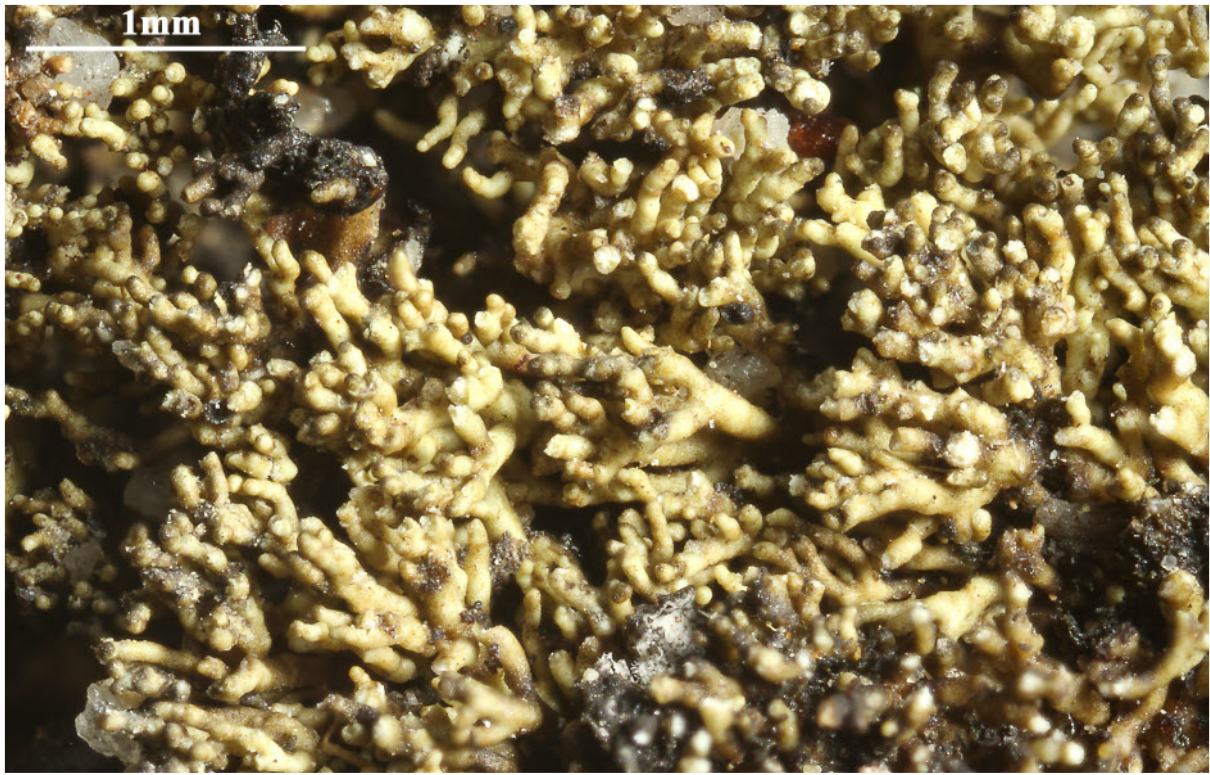






*Xanthoparmelia streimannii*





us: usnic acid, no: norstictic acid, cno: connorstictic acid